

Reisch, Michel, Tink, Dean, Weber, Horne, Poole, Martin, 'Who's Who'



JOY TINK

Joy Tink, ASB secretary, comes from Rockford, Illinois. She has served as: freshman class treasurer and as a member of the college band. She is a member of the Business Club and was a member of the ladies' trio, "The Collegiates" and the Crusader and Oasis staffs.

'This Is That Night' - Curtain Rises

Tonight will be the last performance of the SLA-LSP play, "This is That Night," by Dana Thomas. The play is directed by Ardis Manley and Clarice Harmon.

Juanita Johnston portrays Clare Lathrop, a young woman in her early twenties, as a bit wilful, yet warm and friendly. She is in love with R. Stuart Chanley, played by Harold Weber. "Chan" as he is called, is a tall, handsome man. His very manner shows that he is well-bred, yet not snobbish.

Bill Jackson has the part of Warner Seates, an intense, highly strung person in his early twenties whose young life has been one

Miss Tink was junior class secretary, Nine-to-Five Club president and a member of the LSP society. She travelled for the college with a musical group, "The Melodians," in the summer of 1954.

of constant frustration and disillusionment.

Another of the characters is "Hike" Harmon, played by Stan Kern. He depicts "Hike" as one having a quick sympathy and a deep loneliness.

Mac Dewater is cast as "Dutch" Lewis, a wiry, fun-loving young man. He can also be serious, however, and once he is convinced that something is right, he does not change his opinion.

Leon St. John, George Zickefoose, and "Velvet", Jim Martin, complete the cast of leading characters in the play. Leon appears to be very young. He is gentle, quiet, and rather spiritual. "Velvet" is a young negro who remains in the background unless drawn in by his comrades.

Some of the minor characters in the play are: Mrs. St. John, Mary Wing; "Shorty" Davis, Ken Rodenbush; Louise Mapes, Carolyn Rust; Sister Angela Therese, Peg Jensen; Mary Newman, Margret Schafelli; Jenny, Gail Riley; Mrs. Perkins, Mary Stroud; Mrs. Lewis, Completing the cast are: Donna

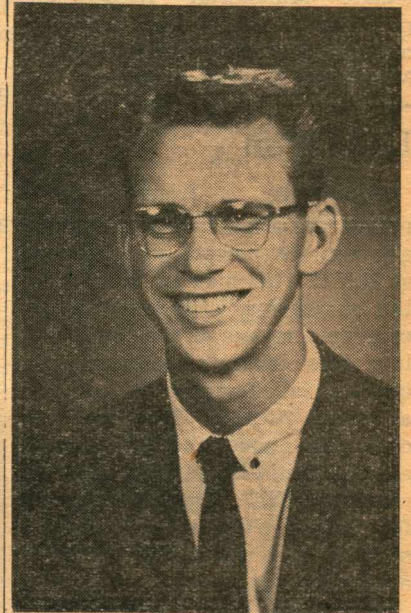
(Continued on Page 4)

Eight Chosen From List of 16 Nominees

Seven seniors and one junior have been selected by members of the student body to represent NNC in Who's Who in American Colleges and Universities. They were chosen, from a list of 16 nominees, during a recent election.

Scholarship, leadership, character and service were the essentials taken into consideration by the voters.

ASB Prexy Named



DARREL REISCH

Majoring in History, this year's student body president from Nampa, Darrel Reisch, was selected to receive the honor. Besides his present position, Reisch has served as president, vice president, athletic director and program chairman of the Olympian society; sophomore class president; director of intramural athletics; assistant business manager for the CRUSADER and program chairman of Circle "K". Reisch is a member of the varsity basketball team and the International Relations Club.



These SLA and LSP society members are presenting the play, "This is That Night," by Dana Thomas. Directors are: Clarice Harmon, SLA, and Ardis Manley, LSP. Sponsors are: Miss Herron; Mrs. Voget and Warnie Tippitt, (not pictured).

N. N. C. CRUSADER

Published weekly during the school year by the students of Northwest Nazarene College, Nampa, Idaho, reflecting their views and opinions, not necessarily those of Northwest Nazarene College. Member of Associated Collegiate Press

EDITOR-IN-CHIEF	Duane Olson
ASSISTANT EDITOR	Janet Johnson
BUSINESS MANAGER	David Mitchell
ASSISTANT BUSINESS MANAGER	Carolyn Ketchum
FEATURE EDITOR	Marvin Brunson
SPORTS EDITOR	Wally Brown
SOCIETY EDITOR	Eleanor Horne
CIRCULATION MANAGER	Glenius O'Neill
HIGH SCHOOL EDITOR	Dave Jackson
ADVISOR	Miss Wilson



WENDELL POOLE

A History major from Nampa, Wendell Poole, was chosen. He was: freshman class chaplain; sophomore class president; junior class vice president and senior class president. Poole was: LSP president as a freshman and vice president as a sophomore. A member of Circle "K" he was treasurer as a sophomore and president as a junior. Poole was Collegiate Ministerial Association president, a debate team member, a member of CWB and is General Missionary Society president.

Little Men

Supposedly, a friendly smile makes one attractive to the opposite sex; but, beware, you are now at N.N.C. This may be termed by the onlooker as excessive flirting or even a means of chasing a fellow. Then there are others who consider all females on campus as being "dead". These are the ones who expect the girl to take all the initiative beyond the expected "hello". They can't wait for Twirp Week to roll around so they can get a date without asking for one.

Has anyone seen any men lately? Mother informed me that I was going to a co-educational school. Oh, I'll admit that there are "little men" who mysteriously appear during the day and occupy pews in my respective classes, but like most mysterious little men, they disappear back into their invisible little habitats after the last school bell has rung. I'll also admit that I've seen them put in their appearance at "Harper's Manor" (better known to the bourgeois as "The Bean"). This proves that these little men must be human, for they have appetites like most normal college men. At this point, however, the resemblance ends.

Mother's advice is daily heeded,

(Guest Editorial)
There's an old poem that reads like this:

One ship goes East, another West
By the selfsame winds that blow.
'Tis the set of the sails and not
the gale

That determines the way they go.
How truly this applies to our
daily lives.

It's not luck that decides our
future, for one person becomes a
success and another fails under
the same circumstances. It's not
necessarily the degree of intelli-

due to circumstances beyond my
control. Her parting words were,
"Now, darling, don't date at the
expense of your school work, and
never let a boy kiss you on the
first date." We hold these truths
to be self-evident, since my dat-
ing has been very limited. I've
been told by some that I'm attrac-
tive; but to be truthful, I feel like
Dracula's daughter! What am I, a
'hrow-back to evolution? I come
standardly equipped with two
eyes, a nose, and a mouth; and I
don't have a stump for a left leg.

I guess I need not feel too infer-
ior, however; others are suffering
from the same malady. Approx-
imately seven-tenths of the datable
girls on the N.N.C. campus are
sitting in their rooms every week-
end. I challenge anyone to com-
pare these statistics with those of
other colleges! Are the little men
looking for Elizabeth Taylors and
Marilyn Monroes? Really, boys,
what gives you the impression
that you're God's gift to women?
As far as you're concerned, the
"plain Janes" on campus are
looking for Gregory Pecks and
Rock Hudsons. All we really want
is a nice guy to have some fun
with, someone to make our week-
ends a little more interesting.

After discussing this problem
with many girls, I have come to
this startling conclusion. The male
population of N.N.C. is brain, not

gence we possess that decides our
level of accomplishment for one
person goes to the top while an-
other remains mediocre in the
same situation.

It's the right amount of the
right kind of motivation behind
it all that "determines the way
we go."

The poem ends like this.
Like the ships at sea are the ways
of fate

As we voyage along through life.
'Tis the set of the soul that de-
cides the goal,
And not the calm or the strife.

First Concert is Great Success

A young bass-baritone got Nampa's Civic Music Assn. concert series off to a flying start Monday night as the audience acclaimed his artistry with prolonged applause throughout the evening.

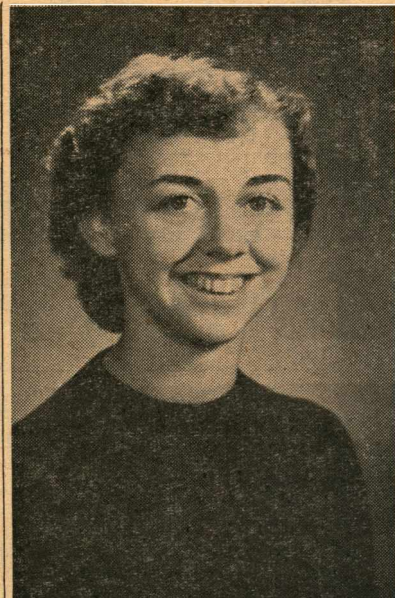
Carl Palangi, already a concert favorite of western audiences where he has just completed a nine-weeks run with the San Francisco Opera Co., is just beginning engagements that will take him through the Midwest and to the East coast with concluding concerts in Florida.

One of Nampa's widely known music educators pointed out that Palangi's great audience appeal Monday night was through "his tremendous acting ability and his really fine voice." He praised the artist's style and his handling of different arias.

Selections ranged from Handel's Si tra I ceppi from "Berenice," through Tosti's L'Ultima Canzone, Claude Debussy's Mandoline, the aria "Quand la Flamme de

brown! We would love to see the "little men" on our campus grow up, stand on their own two feet, and become real men!

Little Women



BERDENA MARTIN

Berdena Martin, an LSP from Tillamook, Oregon, is majoring in English. She was: on the Morrison dorm council; LSP secretary; AWS vice president as a junior and president as a senior. Mrs. Martin is a member of Scriblerus, CWB and Zeta Kappa Rho.

l'Amour," from Georges Bizet's La Jouie Fille de erth; and another from Handel, Thanks Be to Thee, O Lord.

Palangi sang in English such well known numbers as Tally-Ho by Franco Leoni; Into the Night, by Clara Edwards; and Jonah and the Whale by McGimsey.

He was generous with his encores, singing such audience favorites as Road to Mandalay, Ol' Man River, Desert Song, and Do You Remember.

John Sundsten, a Seattle piano teacher, is Palangi's accompanist.

The next Civic concert on Jan. 13 will be the Roman Sisters, a duo-piano team.

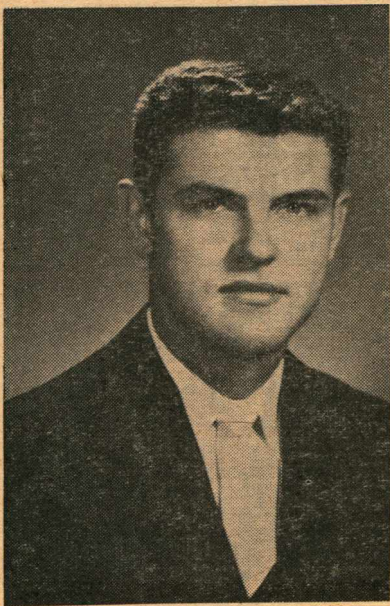
Oly-LSP Combination Wins Turkeybowl

What many of the students hope will be the first annual Turkey Bowl basketball game was played Thursday, Nov. 24. Due to inclement weather conditions the traditional bowl game, played in Bulldog stadium, was cancelled in favor of a challenge the ADPs and the SLAs made to the Olys and LSPs.

Approximately 150 spectators were on hand to witness the contest which saw an Oly-LSP combination come out the victor 60-59.

The ADPs-SLAs led throughout the first half, but the Olys-LSPs' height advantage started to take effect in the second half. With 30

(Continued on Page 3)



MICKEY DEAN

Majoring in Biological Science, Mickey Dean of Nampa, has been active in all phases of campus life. He has been a member of the basketball, baseball and track teams for four years, junior class president, Marshall Science Society president and CHS football coach.

OLY-LSP COMBINATION

(Continued from Page 2)

seconds remaining in the game and the ADPs-SLAs in front 59-58, Olson, an Oly, sunk a lay-in to put his team in front 60-59.

In one last attempt, Gish, an ADP, cast off with a fifteen footer and missed. The final basket by ADP Wally Johnson was not counted because time had run out. So the score remained 60-59 in favor of the Olys-LSPs at the game's end.

High point man for the winning Oly-LSPs, and for the game, was Harold Stickney with a total of 30 points. Willard scored eight

SPORTS

Wally Brown, Editor

Clowns Take 61-54 Cage Verdict

By Wally Brown

The clowning Harlem Clowns romped their way to a 61-54 victory over the Crusaders before approximately 1,000 fans in Central Gym Tuesday night.

The professional clowns, led in scoring by Manny Kennedy with 19 points, had the game under control at all times with their lightening-like passing and accurate shooting. George Moore and Al Sutton tossed in 17 and 12 points respectively for the winners.

Forward Mickey Dean led the Crusaders cause with six baskets for 12 points.

Three quick baskets by Mickey Dean made the score read 23-18 but soon afterward the Clowns took a 10 point lead and were never seriously threatened thereafter. The score was 34-25 at halftime.

BEGIN COMEDY ROUTINES

In the second half the Clowns began their crowd-pleasing com-

and "Bugs" Olson dropped in seven.

For the losers, Beukelman was high with 18, Gish had 16 and Cliff Oleson 7.

The teams were never separated by more than five points at any time during the game.

edy routines such as tossing in a weighted ball, giving ball handling exhibitions, and playing baseball and football while throwing out a constant barrage of wisecracks.

★

Saturday the Crusaders resume regular play meeting Eastern Oregon College of Education in a Central Gym encounter scheduled to begin at 8:15 p.m.

★

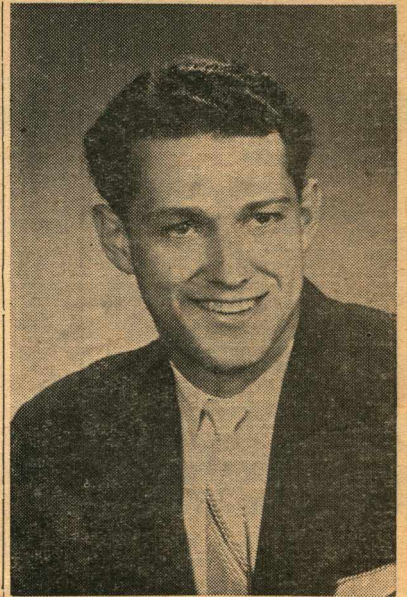
Alumni Whip JVs 78-46

The Northwest Nazarene College Alumni defeated the NNC junior varsity squad 78-46 in the preliminary contest to the Crusader — Westminster game Saturday night in Central Gym.

The Alumni, paced by the shooting of Curt Beukelman, the rebounding of Carlyle Dean and John Cramer, and the ball handling of Myron Finkbeiner, proved too much for the smaller and less experienced JV squad.

The Alum lead, however, was all produced in the second half as the score at mid-game was knotted at 31-all. In the second half the Alumni, paced by Millard Reynolds, Finkbeiner and Curt Beukelman, gradually pulled away.

Norman Blair led the junior varsity team with 10 points on four field goals and two free throws. Blair was followed by



HAROLD WEBER

Hal Weber, an LSP from Walla Walla, Washington, majoring in Business was chosen as one of the eight. He was freshman class president, student council representative as a sophomore, "N" Club president, a member of the baseball team, and the basketball team four years. Weber was society president, had part in several society plays and was a member of Circle "K" and the Business Club.

Johnny Finkbeiner and Al Freeman with eight and seven points respectively.

ATTENTION
For Christmas presents in the cutlery line, see:
Alan Rodda, Max Jinkens, or Harold Fencil
NICE GIFTS AT ALL PRICES

For the BEST
HAIRCUTS
in Town—it's
SHELTON
BARBER SHOP
12th Ave. Between Main & 2nd

THE CEDAR CHEST
—Home of the—
DELICIOUS BARBECUE SANDWICH PLATE
Open from 11 a.m. to 7 p.m. 13th Ave. So. near Front Street

A WONDERFUL WAY TO
FEEL BETTER — DRINK
THREE GLASSES OF MILK
A DAY
HOME DAIRIES

TOPS in
CLEANING!
French Cleaners
FINEST IN SHIRT LAUNDRY
Kampus Korner — Representative
PHONE 6-4676 133 CALDWELL BLVD.



ELEANOR HORNE

An Elementary Education major from Nampa, Eleanor Horne, was a member of: the Business Club; Zeta Kappa Rho, as a sophomore, CRUSADER staff; the Nine-to-Five Club and FTA. She was LSP and Athletic Literary Council secretary 2; AWS treasurer 3 and vice president 4; FTA president 4; Keys to the Kampus editor 4 and is senior class secretary.

SOCIETY

ELEANOR HORNE, Editor

Cupid's Corner

Kennewick, Washington was the scene of an impressive ceremony which united Marlene Graves and Don Edwards in matrimony on Friday evening, November 25. Congratulations are in order to the groom, a senior at N.N.C.

Mr. and Mrs. Oldenkamp last week announced the engagement of their daughter, Mary Lou, to Herbert Kinnaman, a former student at N.N.C. No wedding date has been set.

CWB Corner

Organization is taking place in CWB, as many calls are coming in, asking for help in local revivals.

The Ambassador quartet went to the Church of God for Thanksgiving Sunday, the 20th of November. They also went to Weiser for a service at the Penitentiary on the 27th Sunday morning they sang at the Mayfield

Community Church. Jim Ridgeway went with the Ambassadors to do the preaching at Notus.

Ken Rodenbush, Jean Wilson, and Donna Murray sang at Burns, Oregon Saturday and Sunday. Anne Mae Bauerle played their accompaniment.

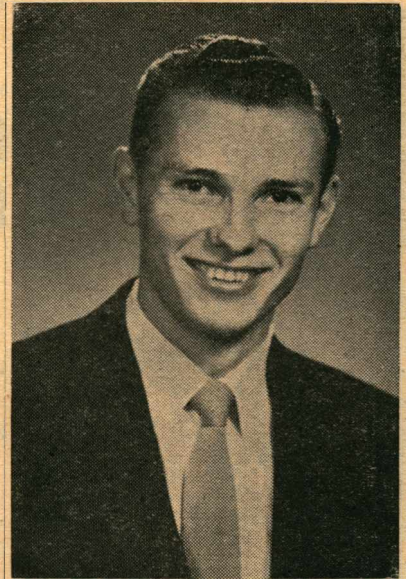
'THIS IS THAT NIGHT'

(Continued from Page 1)

Marge Clay; and The Master, Tom Kegley.

Fletcher as Jeanne, Don Oleson as Father, Lora Jane DeLashmutt as Margot, Wilma Hokanson as Maria, Paul Miller as Nicolai, Pat Tolan as Tanya, Colleen Wooten as Mme. Losan, Joe Michel as the first soldier, Dave Mitchell as the second soldier, Duane Stuekle as Levi, Ruthie Burkhart as Nadine, George Ferguson as Abraham Lincoln, Cliff Oleson as Willis, and Paul Freeburg as McGinnis.

Setting for the play, which combines both the suspense and surprise of a mystery story, is a tiny island in the South Pacific. The time is after the close of World War II.



JOE MICHEL

Vice president of the student body, Joe Michel, a Biological Science major from Monrovia, California, was also chosen. He attended Pomona College, California, in his freshman year; was LSP president as a sophomore and is a member of Circle "K". Michel has been president of the Crusader Choir, a member of the tennis team and is on the dorm council.

NAMPA TROY LAUNDRY, INC.

DRY CLEANING

"Let A Single Call Do It All"

PAUL FREEBERG, Campus Representative

FLAT WORK

PHONE 6-2486

LOWEST DRUG PRICES IN TOWN

SHOP HERE AND SAVE

ECONOMY DRUG

Across from City Hall

DAIRY KING

★

- Hamburger 20c
- Chiliburger 25c
- Pickleburger 25c
- Cheeseburger 25c
- Sloppy Gus Burger 35c

★

Also

- The Mongrel
- The Krauthound
- The Bar-B-Q-Pup
- The Mut-Caliente

★

ORANGE JULIUS

10c

★

- ROOT BEER
- COKES
- FOUNTAIN
- ICE CREAM SUNDAES
- MALTS
- SHAKES

524 - 3rd St. So.

Points on Pronunciation

IT'S JUST NOT JIST

For Your Lunch

Come to the

DOG HOUSE

across from new high school

Hamburgers . . . 20c

Hot Dogs20c

Softies

School Supplies

OPPORTUNITY IS KNOCKING

Now is the time to take advantage of the introductory offer. Today you can get your 1955-56 Basketball

PRESS BOOK

35c

IN THE MAIN HALL

Will be sold at all games for 50c

Sponsored by the Junior Class