

CRUSADER

Volume 37, No. 7

The Student Newspaper of Northwest Nazarene College

February 2, 1983



\$\$\$\$\$\$\$\$\$\$\$\$\$\$\$\$ The Money Squeeze

By **RON STUECKLE**
Crusader Staff

With the approach of the new school year at what seems to be a considerable distance in the future, it would appear that next year's financial situation should not yet cause a great anxiety. However, as is indicated by the large amount of students already beginning to apply for financial aid, this is not the case. The financial situation of both the school and the student body is distinctly reflecting the general economy of the nation.

Last December, NNC's Budget Committee began their long trek of meetings to determine and propose the official NNC budget for the 1983-84 school year. The budget that is decided upon by the committee will

then be present for approval to the Board of Regents this next March.

"Each area of the school," said Galen Olsen, NNC's Business Manager, "and we have the administrative areas of Presidential Affairs, Financial Affairs, Student Affairs, Academic Affairs, and Communications and Development, was given a target goal of dollar cut-back. In some cases, it affected both program, which we call General Expense, and Personnel, which is salaries. It will likely mean a cutback in terms of adjunct faculty more than it would full-time faculty, because that's the first area that is cut. It would also mean a cut-back in some part-time staff positions, and perhaps a few full-time positions."

The tuition increase as expected for next year will be "the smallest tuition increase in the last at least five years."

Aside from tuition increase, Olsen claimed that "food will have to show some increases, because the cost of our contract will be more. We're trying to, if we can, freeze housing for you, however."

Another current problem that is affecting the financial situation on NNC is the decline of students enrolled. "That's the same as money lost when the students aren't available," said Olsen. "We dropped 98 students last year, and we could drop as many next year, if the charts were followed. We think we can beat that, so we're not budgeting for that."

There is an estimated

drop, however, of enrolled students of two to six percent.

One important question that must be asked said Olsen, is: "When are we pricing ourselves too high for our own constituents? If you think you're not going to be able to serve primarily Northwest students in terms of higher education, tuition can't automatically keep going up, even though you need it."

Some encouraging circumstances are arising, however. One area in which NNC has always been fortunate is that of gifts given by specific members of the school's constituency.

Recently, Mr. Leo Qualls, from Salem, Oregon, donated one million dollars to NNC, which is to be

received as \$100,000 per year, for ten years. This money will be placed into an endowment fund and the earnings from it will be passed along to the students in the form of financial aid.

Also, a Nampa realtor donated some subdivision land south of Nampa, which will be sold, and the money will be placed into the endowment fund.

Due to these recent gifts, and some earlier contributions that have been previously placed in the endowment fund, according to Paul Stallcop, "The scholarship pool of available funds that NNC has control of that we distribute has been growing over a number of years."

The scholarships and allowances that are available through NNC unless they are endowment scholarships where the earnings have increased will, for the school year of 1983-84, remain the same as the previous year, with a possible increase in the Honors Scholarship or the Activity Scholarship.

The Honor Scholarships, which are granted according to pre-set academic criteria, are going to be

available on the same criteria. Consequently, there will be awarded 250 to 265 scholarships again next year.

The President's scholarships were "originally set up to attract a very high quality individual all the way around and still are," stated Stallcop. "Academically, but not just academically. They had to be individuals who participated, and made significant contributions in their high schools. The President's Office does the entire evaluation of that. They send out their own evaluation forms and ask for references and letters of commitment of educational goals of the student. They then make the recommendation."

"Several years ago," Stallcop noted, "the President's scholarship was changed from being a few large scholarships to being a large number of President's Scholarships at a smaller amount."

As to federal aid, Mr. Stallcop commented that he was of the opinion that loans from the institutional loan programs (e.g. **cont. page 8**)

The missionary spirit

By **BILL BYNUM**
Crusader Staff

Dr. and Mrs. Ron Beech traveled from the Phillipine Nazarene Bible College to NNC to be featured speakers for the Mangum Missionary Series.

Through slides they informed us of their work and urged us not to just hear the sounds and see the pictures but to "look with eyes of compassion on people with need." The Beeches tried to paint an accurate picture of their situation in the islands. We were shown not only the primitive tribal aspects, as in Kathy and Barry Beech's fair-skinned attempt at native dressing habits, or lack thereof, and musical tastes, but in the slides the westernized side of the Philippines with its traffic problems and industry, was shown.

Dr. Beech sees the importance of showing the honest state of their ministry not only being culturally accurate but also being honest as to the struggles and success of their ministry, avoiding the "war stories" often heard in the past. Dr. Beech sees this move towards giving the whole picture as important in removing the remoteness that Christians feel here regarding missions, and he thinks missionaries today are more willing to present the whole picture than

some have in the past. They do not try to make the missionary appear to be a super-Christian with no difficulties and a 100% conversion rate.

One major point Dr. Beech made throughout his sermons was that the missionary spirit is at the root of Christianity. Dr. Beech said that to accept Christ is to enlist under a missionary banner, and presented his definition of missionary spirit in a universal way.

Most of us have heard this before but nevertheless the basics are the things that need to be repeated.

Dr. Beech warned against the church being in a "holy huddle" and stated that Christians are stewards and are held accountable for aiding a world without Christ. "Basic to Christianity is self-giving. The church can't be the church without reaching out."

Yet, though Dr. Beech clearly stated the primary

needs whenever they see them. Evangelism and social service go hand in hand; one without the other is not very effective.

Another focus of Dr. Beech was his discussion on the missionary "calling," directed towards those of college age who are deciding on their life's vocation. Dr. Beech admonished that "steps of faith involve risk." If you are waiting for absolute proof that you are called to missions it will probably never come.

Yet he told us to be alert, for God does speak. In his own life, God spoke through other people helping Rev. Beech to find God's direction.

Another way God speaks is through study of the Bible, not only being knowledgeable but assimilating it into our very being where it becomes a self-directing force. Also, God speaks through knowledge of world conditions which can mature into motive for action. Logical thinking is also necessary. Our talents and gifts help tell us where we fit in.

In short, Dr. Beech not only informed us about the missions in the Philippines but presented a rational, universal view of missions.



Dr. Ron Beech

The missionary spirit is not to be exhibited only in remote places of the world but should be intrinsic to everyday life. Although certain people are called to cross-cultural ministry all Christians are called to have a missionary spirit.

importance of evangelism in changing the lost condition of the world, he did not neglect the importance of meeting the physical needs of people. Although his basic concern is fulfilling people with Christ Dr. Beech said they meet

First place twice

By **FRANK E. FROSH**
Crusader Staff

Jeff Sharpton, a senior from Nampa, and David Adams, a sophomore from Papua, New Guinea, won first place in the Longest Day of Skiing. The event was held during Christmas break and is a fund-raiser for MS.

Both of the students participated in the event last year as well. In their two years as a team they have raised \$1,200. About 90% of the contributions came from College Church.

Prizes for the skiers included a new set of skis,

bootwarmers, t-shirts, and plenty of pizza provided at a banquet held for the winners. The Longest Day of Skiing is sponsored by Sunset Sports, Bogus Basin Association, Keystone Pizza, and KBBK Radio.

Although the weather was bad, there was little publicity, and the event was held during break, Sharpton and Adams raised over four times the amount of money as the second place team. Sharpton and Adams won first place last year, winning a year's ski pass for their efforts.

NEED COPIES? We use the Xerox 9200!

THORNE PRINTING CO.

- While You Wait
- 120 Copies Per Minute
- Collates
- Any Paper. Any Color

PHONE 466-3682 Just one block from NNC on 12th Ave. Rd.

• ALSO WE CARRY OFFICE SUPPLIES

What we did during our Christmas vacation

By JAMES E. BENNETT
Crusader Staff

My dear fellow collegians, I do not have much to say today in the way of quantity, but I believe the importance of it is becoming more and more real to me each day. I want to simply say: "KNOW WHAT YOU BELIEVE." It's as simple as that... but the implications are incredible.

We all experience a variety of situations and encounters, and yet in each instance our values are tested. I happen to be enrolled in a Church Growth class as well as a Theology course this term. Every class I step into I find myself asking the question, "What do I think about this?" To be honest, at times I come away very confused. But the question remains. It haunts me around every corner, in every relationship, in every worship service, in everything I do!

Because my actions and attitudes are based upon my belief and value system, I am finding it increasingly important to search for truth. That may sound corny, but I don't care. I'm supposed to be an adult now, and I'm realizing that it is okay to possess my own biased opinion. The only catch is that when I hold to my own opinions, I must also realize that other persons hold different ones. To respect their opinions and be open to change in my own life offers to me a quality of life that is both appealing yet challenging.

Let's take advantage of this college setting which encourages good thinking and creative action. There is no other time in our lives when the opportunity to learn will be as great as it is today. STATE YOUR CASE! KNOW WHAT YOU BELIEVE! But please don't force your own personal convictions down my throat.

"Do nothing from selfishness or conceit, but in humility count others as better than yourselves." (Philippians 2:3)

by Tim King

Each one of you will be asked a question on Friday that may be answered with a simple "yes" or "no". The decision is yours. Between the hours of 11:00 a.m. and 1:00 p.m. and 5:00 p.m. and 6:30 p.m., the polls will be open in the Student Center Lobby for an all school vote on the following question: SHALL STUDENT FEES FOR THE 1983-84 SCHOOL YEAR BE RAISED \$2.00 PER TERM, TO A TOTAL OF \$22.00 PER TERM?

This question comes as a result of Senate's 9-3 passage of Senate Bill 8211-4 on November 30, 1982. Now, in order for the bill to take effect, two-thirds of the student body must give their approval; if less than two-thirds approve the bill will die.

Think about the matter carefully. Talk to any ASNNC Senator or an Executive Officer if you have any questions. You should receive in your post office box a statement of reasons for and reasons against the bills approval either today or tomorrow. The final decision, however, will be yours.

The text of the bill is as follows:
1983-84 STUDENT FEES

Whereas: The rising costs of our economy has taken a significant toll in the spending power of ASNNC, and
Whereas: To meet the needs of the student body requires additional funding,

BE IT ENACTED: That student fees for the 1983-84 school year be \$22.00 per term (based on the calculation of 1.25% of tuition, room, and board).

by Scott Keller

We are well into second term, and by-jeepers, I think it's time again for me to sing and shout about the discipleship groups that we have available on our campus. Some groups have been organized since first term, and a few of these groups are really on the move!(Me thinks...)

However, several students have enquired about getting involved in a discipleship group that either were not in one before, or the one they were in was in conflict with their schedule. In reply to this, we will be starting a discipleship group that will be meeting on Tuesday afternoon from 4:30 p.m. to 6:00 p.m. in Williams 107. This is a group that is open to everyone so let's get down to business, the business of being a disciple!

Also students, faculty, and administration will be meeting for a time of prayer on Thursday during lunch hour from 12:00 to 1:00 in the prayer chapel. Let's pray together for the needs of our Campus and our world.

by Teri Thompson

If you can think all the way back to first term, you may recall in your list of significant moments, the time you gave up a Big Mac, fries, and a Coke so that some campus group could build a roof in a town you're sure wasn't Nampa. "What was that group? Where was that town? And what I ever give up a Big Mac, fries and a Coke for?" you may ask.

The group was CIM(Crusaders In Mission); an on-campus group seeking to foster missionary interest on campus. Once a term you will see them take over a chapel service. They are active in on-campus prayer ministries and inter-term and summer missionary projects. Their goal is serving the campus and Christ's church through Christian love in action.

The town was Muzquiz, Mexico, just south of Eagle Pass, Texas. The project was to build a roof and a building for a church. Before leaving, CIM committed itself to raising \$2500 for the project, not including travel and living expenses.

Spanish Professor, and sponsor of the trip, Newell Morgan said that each person who went put up \$150 for travel and food expenses and so the group was operating off a budget of about \$1800. "We actually made the trip for a little less than that. The trip was about 3600 miles and we were using my pick-up, Dene Simpson's motor home, and Roger Sauter's car and so we felt it was an economical trip in that sense."

Faculty and students who went on the trip include Newell Morgan, Dene Simpson, Roger Sauter, Cara Helt, Kim Wannamaker, Ron Myers, Carl Thompson, Shonna Binder, Jay Ralphs, Leora Galvan, and Karen Gerdes.

On December 11, with \$2200 raised, they left Nampa, arriving at Muzquiz on the 13th; a town struck very hard financially. Morgan said, "Mexico has an inflation rate that makes ours look ridiculous."

The people in this town were sacrificing heavily to build a Sunday School for

their children who had Sunday School in the street. The pastor's house was crumbling and falling apart. Its walls were painted cloth, and the ceiling was falling down. Morgan expressed the group's surprise when these people said they would provide them with lunch and dinner throughout their stay.

giving too. The kids were just overwhelmed. You know, you expect to give, and you are given unto, and given in greater measure than you give."

In addition to fixing meals for the group, the people worked alongside during construction, shared recipes during mealtime, and each night shared

experience in all aspects."

All that money went further than CIM had anticipated in Mexico, so in addition to building a roof (which was also to serve as a floor for the pastor's home) the group dug a septic tank for the church.

Morgan expressed some disappointment that, although the main funds of the project came from the

campus community, it certainly did not come close to even the \$2.00 per student mark they had tried for. "Sometimes I'm a little disappointed in the lack of student interest in giving. If you average out what was given, it would come out to a dollar per student, maybe."

As far as the actual trip, he said they took basically everyone who applied but, "It's Christmas, and people want to go home. They don't want to participate.


The group left Musquiz on December 19, arriving back at NNC by the 21st. Morgan said that the perfect weather (they missed a violent storm by one day), the good spirit of the people who went, both on the road and in Mexico, and the giving, receptive spirit of the Mexicans made the trip "perfect."



CIM'ers and friends

"While it was poor man's fare, lots of beans and tortillas, it came from people who were trying to show us 'we care about you and we want to do our part in

devotions with the group. Students were impressed by a growing spirit of unity between the two cultural groups. Morgan said, "It was a really neat cultural



Rainbow Flowers

218 Homedale Ave. - Caldwell

"save by phone"

**All Sweetheart corsages and boutonnieres
20 % off**

Rosebud vases - \$5.95

Carnation vases - \$4.95

"Heart of Flowers" arrangement - \$15.95

call
454-1760

free on-campus delivery
\$2 charge elsewhere

Editorial

Hatcheting Hal

It is difficult to write about an issue that has the possibility of long-lasting harm as does this one. I am not merely addressing a grievance against a policy or philosophy. It is important, most of all, to remember we are talking about a human being and not a vague or established formality.

Hal Poarch is leaving, the Administration has rather quietly announced. He has decided to use means established within the system for faculty members- the Grievance Committee. That is important to remember. Hal is using procedures for review of his termination that has been established for the protection of all staff and faculty members. There is nothing under-handed or un-professional about an employee using this option.

And what about the system? Examine the question of fairness, the equitable treatment of an institution's employees according to stated policy and procedure, along with any precedents that might exist. The process of termination is outlined in the Faculty Handbook for faculty and professional personnel on the campus. Shouldn't that process be adhered to? If not, why not? The Handbook states the following reasons or grounds for termination of continuing or three-year contracts:

1. Financial exigency: continuing contracts are to be terminated in a financial exigency on the basis of least seniority.
2. dismissal for cause:
 - a. serious insubordination
 - b. serious incompetency
 - c. immoral conduct
 - d. holding beliefs contrary to the doctrine of the Church of the Nazarene.

The rationale for termination of Poarch's contract has been that "he serves at the pleasure of the President and should leave when the President leaves." The comparison of a Senior Pastor/ Associate Pastor is given. Yet, NNC's former chaplain was appointed under Dr. Riley and continued under President Pearsall. At other Nazarene colleges, chaplains have served under more than one President. And organizationally, the Chaplain's office is listed under the Office of Student Affairs, not under or alongside the President.

I would also not hesitate to express some doubt at the idea of Pearsall being our Senior Pastor and Poarch being the Associate Pastor. Pearsall, as a Regent kindly pointed out to me, is not here for the students. He works with Community relations, other administrators, Board of Regents, policy decisions, and so on. Dr. Ford works with academics and Jerry Hull works with the students, thus the title Dean of Students.

Poarch views the students as his congregation as he rightfully should. It is he, not the President, who ministers to them. Perhaps the tidy simile of Senior Pastor/ Associate Pastor should be scrapped and the more applicable comparison of District Superintendent/ Pastor be used. What D.S. fires the pastor of a church when the D.S. leaves the district?

Pearsall said to me that he felt "released" from his job. I do not doubt that the Lord has given him this "release". But Nazarenes do believe, I've been told, that the Lord has deals with each of us in a personal way. Because the Lord has "released" Pearsall from his current ministry of college President does not mean that the Lord sent a xeroxed message to the Chaplain. It is dangerous, and presumptuous, to believe so.

One professional personnel member expressed displeasure at Poarch's reluctance to accept his current situation. "In the real world," this person told me, "When they say 'Go', you go!" At the same time I've been told that Poarch's determinism to stay in his ministry, is "un-Christian." He should not rock the boat but meekly accept what has been done. This is double-talk, NNC cannot have it's secular -example cake and pray over it, too.

If you want Chaplain Poarch to be here next year, I believe it's still not too late. This man has touched the lives of his congregation. Write a letter of support for our chaplain to President Pearsall. Let's do something as simple as saying we care.

EAM



An unsolicited opinion

To the Editor:

I never thought I would be writing you, but I cannot keep silent any longer. There have been a lot of things going on lately on this campus that have been bothering me.

One thing that bothers me is the school continually ranting and raving about this school's financial condition, when even Jerry Hull has stated that the school is financially stable. What really bothers me is that this college has things reversed. The students are the ones that are financially unstable. It sickens me to see my friends who con-

tribute alot to this school having to drop out because of no money. It seems to me that the college would be wise to establish good relations with the students. After all, aren't we tomorrow's alumni? If they want to come begging to us for money ten years from now, I suggest they give us some reasons to be very glad to give them the money.

Another thing that is disturbing me to no end is the threat of the removal of this newspaper. The idea of putting the newspaper into a class where just facts are presented is just plain

stupid. Where may I ask, would I be able to publish my opinion? Money is the surface level reason here, but it is a poor reason. The *Crusader* costs approximately .66 per copy to produce. I don't believe that for one moment that if the paper were cut, that that money would be cut from student fees! If people in high places are concerned with cutting down costs why, pray tell, don't they keep a closer eye on the *Oasis*. Year after year, the *Oasis* spends what it wants and consequently goes into debt. Why isn't Pub Board keeping an eye on the *Oasis*

to keep this from happening? The *Crusader* editor is watched like a hawk, but no one even looks at the bill of the *Oasis* until the editor is out of office! Another thing that bothers me is the ASNNC President is in charge of Pub Board. Isn't this a conflict of interest? Isn't it kind of like Ronald Reagan being in charge of the Washington Post? It seems to me and a few others that the real reason for getting rid of the *Crusader* is to get rid of adverse opinions (like mine). Some people are just "don't want to hurt or em-

Cont. next page

Shipley on a Shingle

To the Editor:

Since the last publication of the *Crusader* I have had many people tell me of their position on my letter to the editor. These varied positions have brought me to the point of writing once again to clarify my position.

My letter in the January 19 *Crusader* stated: "We, as students, are tired of being treated as though we are an inconvenience on this cam-

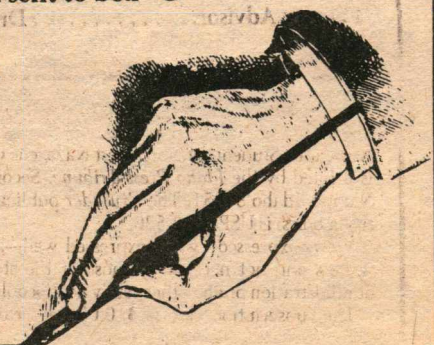
pus." I went on to list two of my pet peeves. (As this is an editorial column it is considered an appropriate thing to do.)

However, some people seem to think that stating an opinion is not a "Christ-like" thing to do. Though many people agreed with my statements, I was also berated for being "selfish and inconsiderate." Even

Cont. next page

Letters to the Editor are not columns, articles or editorials. They are just letters to the Editor from regular persons like yourself, which must be signed and sent to box "C"

Letters to the Editor



shipley... my Christianity was questioned.

First of all, my Christianity is the most important thing in my life. In fact, being a Christian is my life, without which I would have no hope. My highest desire is to serve God. As an individual God gave me the right to my own choices and therefore my own opinions. I will not try and impose my opinions on others, and those opinions are subject to change as God directs me.

Secondly, I would like to point out that I was not attempting to selfishly hurt or cause pain to anyone else. I was in fact, merely pointing out a problem on this campus from my point of view. I realize also that students on this campus are often rude to those employed by NNC. I am not excusing that behavior and I do believe that is also a problem.

We all, as students or employees, are called as Christians to be of one

mind and one purpose. Philippians 2:2-4 reads: "Then make my joy complete by being like-minded, having the same love, being one in spirit and in purpose. Do nothing out of vain conceit or selfish ambition, but in humility consider others better than yourselves. Each of you should look not only to your own interests but also to the interests of others."

I realize here that I may have presented my opinion in a selfish way. Not that the opinion in itself was wrong, but my presentation was too harsh. I will not retract my statement because I believe our treatment of one another is a very real problem on this campus. I do apologize that my last letter was so harsh as to cause anyone to question my Christianity. The next few weeks you will find me working to better my attitudes toward others. Agree or disagree, the choice is yours.

Rhonda Shipley

opinion...

barrass others." Well, I don't really consider that a very valid reason for getting rid of one of the best things around this campus.

One of the final things bothering me is the amount of power-hungry people on this campus—students and administrators. Some people just can't wait for an opportunity to stab someone in the back! Others aren't happy unless they are suggesting or pushing for something just

so they can show their power! One could only assume that this is all in "good Christian fun."

I realize that this letter has a great deal of negative and will probably disturb a great deal of people. Well good! That is what my intention in writing this letter. I just hope and pray that in the future, students here at NNC will be able to write the good and bad opinions in this paper.

Andrea Woolbright

Crusader Staff

Editor..... Elizabeth Martin
 Associate Editor..... Ron Stueckle
 Copy Editor..... Jim Ferguson
 Feature Editor..... James Bennett
 Typesetter..... John Neil
 Business Manager..... Lisa Fye
 Photographer..... Vaughn Warren
 Sports..... Ken Hardee
 Circulation Director..... Steve Allison
 Morale Consultant..... Helen Wilson
 Faculty Advisor..... Dr. Gaymon Bennett

The Crusader is a bi-monthly (now does that mean twice a month or every other month?) publication of the Publications Board of the Associated Students of Northwest Nazarene College. The Crusader is printed by the Idaho Press-Tribune. Second class mailing paid Nampa, Idaho 83651. The Crusader publication number (for real trivia buffs) is USPS 892-520.

Views expressed—when expressed well—are often those of the writers and not necessarily those of the staff, students, faculty, administration or any other really neat people on campus.

The subscription rate is \$10.00 per year for non-students. A small "friend-of-the-family" rental fee can be arranged for staff, faculty, administration and various house plants and parakeets.

Was it something we said?

To the Editor,

I do not make a practice of sending my opinions to newspapers but I was very disturbed by an article in your last issue.

I do not know Jim Ferguson and I do not wish to judge him. If my letter does seem judgemental forgive me.

Mr. Ferguson's story "Christian rock rolls through NNC" seemed to be very prejudice (sic). He merely focused upon the "rock and roll," discounting the message. I myself am not a rock enthusiast. I also denounce secular rock tremendously. I, however, was inspired at the Servant concert.

Mr. Ferguson asserted in his article, "these groups seem to forget that there is more to making good music than ripping of (sic) the musical styles of popular secular artists and then

tacking 'Christian' lyrics on afterwards."

Following this line of thinking we must immediately (sic) edit the hymnals we use in chapel. The great majority of the songs in our hymnal have secular tunes. Wesley, the great leader of the methodist movement, who is respected by almost all Christians, actually took bar tunes and put "Christian" lyrics on afterwards. Yet we love to sing these tunes and are inspired by them.

Then if we denounce those who immitate secular rock artist (sic) we must also denounce those who follow the styles and trends of any secular music.

Servant may be like Cars or Rush but Chris Christian is like John Denver; B.J. Thomas is like Barry Manilow; and Sandi Patti also has her secular counterparts. What makes John

Denver better than Rush, nothing (sic). His music leads just as many people astray.

Denouncing all rock is like denouncing all television without recognizing Christian Broadcasting Network, P.T.L. Club and all other Christian media. Certainly lets (sic) not denounce these organizations because they use secular television.

We should test Servant not by their rythm (sic) or style but rather by their message, their lives, and their fruits.

Mr. Ferguson being concerned about the type of music seemed to miss the message. I and many others were challenged with Christian commitment (sic) and fulltime Christian service.

The fruits of Servant are tremendous. They reach the rockers, the stoners, the people of Europe where the

church is almost non-existent. These people won't listen to the "kosher" bands. When they are not on tour they provide many ministries in the Grants Pass area of Oregon, they are "servants."

We can not wait for the sinner to come to us. We must go to where the sinner lives and we must speak in language he understands. If this language is rock and roll then lets (sic) speak it.

A house divided against itself can not stand! We as Christians should not tear apart other Christian groups and organizations because we dislike their type of worship or disagree with petty doctrines, especially if they are spreading the gospel and leading people to Christ.

I hope I have expressed my opinion clearly and respectfully.

David Mark Odell

Hal's that again?

To the Editor,

About two weeks ago I heard a rumor that Hal Poarch (our Chaplain) is leaving our campus in June. Not going on rumor I investigated the matter asking all parties concerned as to if and why Hal's leaving.

The findings from this investigation has confirmed all rumors & has left me quite unsettled. I'm not

in the position to, nor do I believe in, spreading rumors. There is one question that's been left unsettled. How come the students weren't notified in the open (i.e. in Chapel) about Hal's leaving? Hal's departing has been known for some time by a few people. Since this has been known for some time, how come the student body hasn't been notified at the

beginning of the year (i.e. President Pearsall's resignation)?

Personally, I think Hal has been a great asset and has affected many students on this campus. The way the announcement of Hal's leaving was made was not only unfair to him, but unfair to the students. Why should we be notified publicly at the last minute that an important faculty member maybe is not coming back next year?

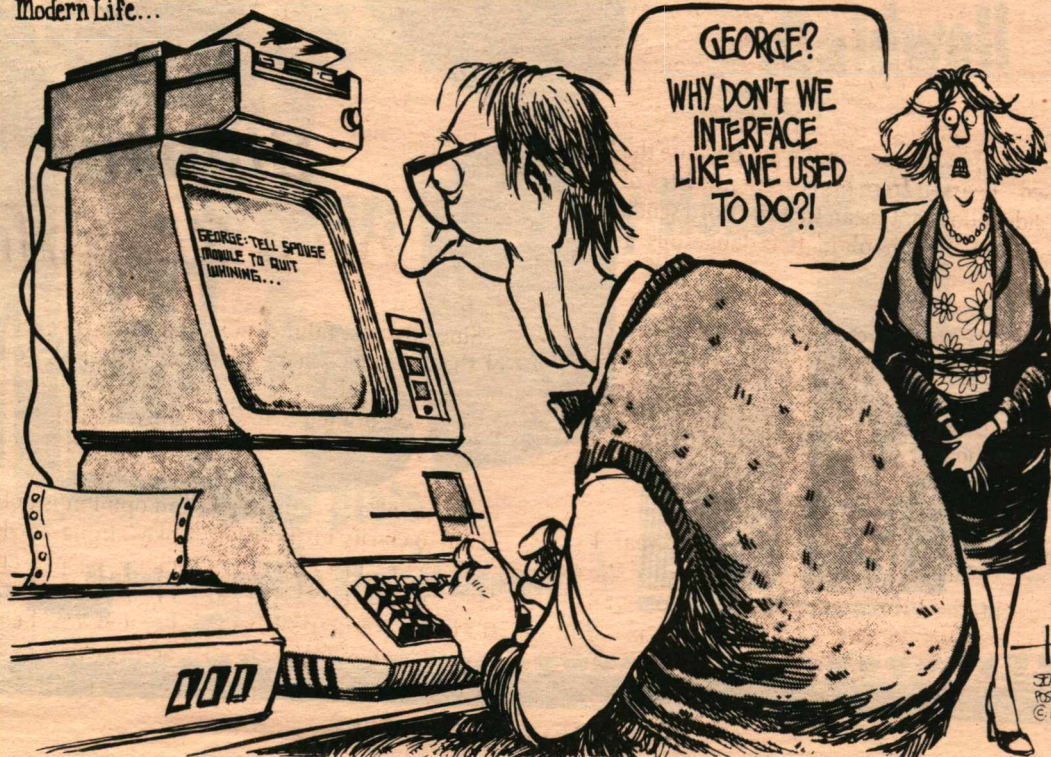
One other thing. Hal is the students' Chaplain and

we do have a right to express our opinions. If you are in support of Hal staying and you want to be heard talk to your home church pastor (better yet, your regent) and tell him (her) how you feel. If you're questioning the validity of this topic you can make an appointment with either Chaplain Poarch or President Pearsall. Keep your eyes and ears open for petitions that will be going around soon.

Maybe it's not too late to keep Hal.

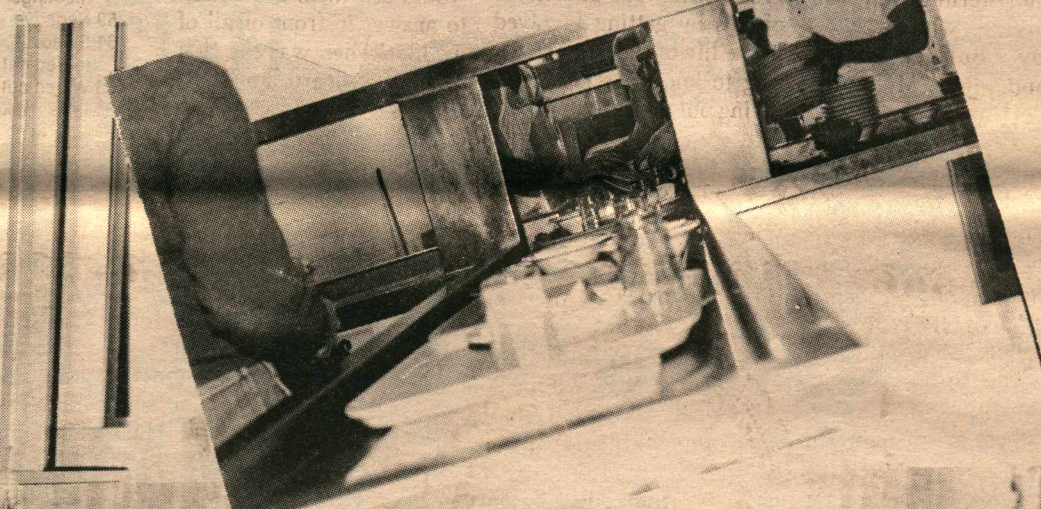
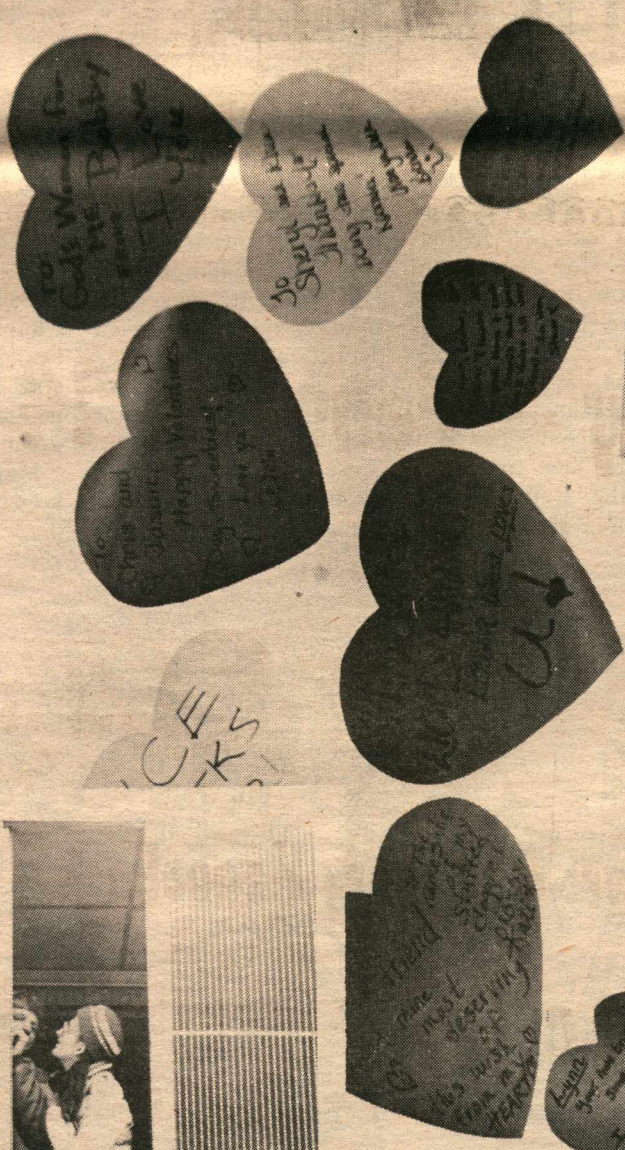
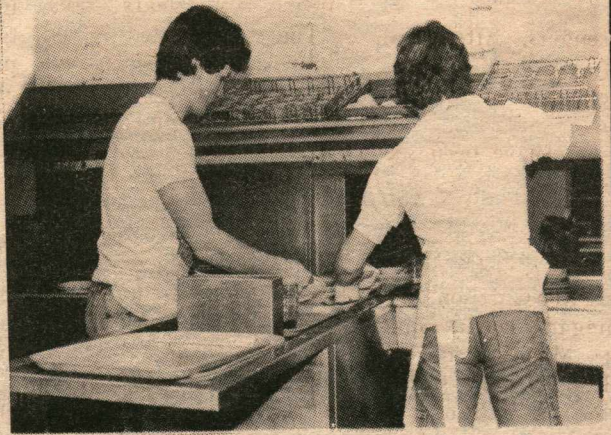
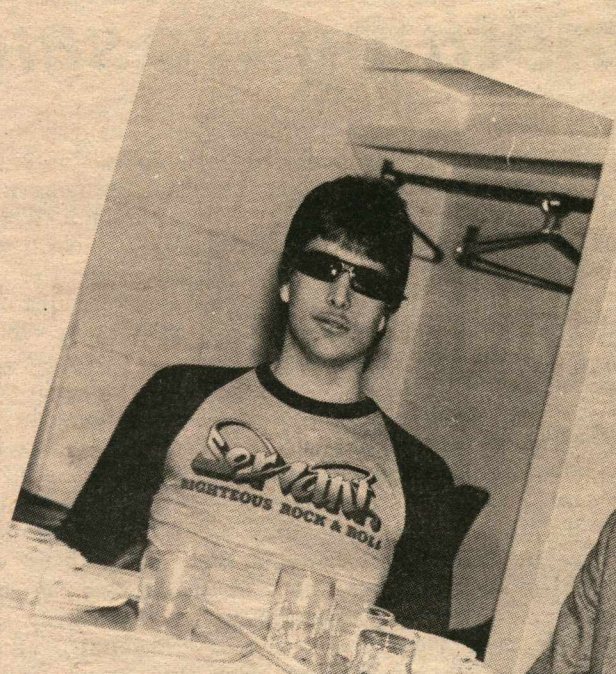
Bob Coston

Modern Life...



College Press Service

Focusing



T
By
T
for
NN
edu
sun
trav
bas
Me
day
mo
son
men
ted
F
me
bas
Da
Fla
Sor
ny
An
ren
Ga
yea
gro
fro
kno
lon
I
the
Me
Me
Fr
Ro
an
ar
In
pr

Traveling groups selected

By JAMES E. BENNETT
Crusader Staff

The people responsible for taking the message of NNC to its supporting educational zone during the summer are summer traveling groups: The Ambassadors and The Messengers. After many days of tryouts, callbacks, more callbacks, and personal interviews, group members have been selected.

Heading up this summer's campaign in the Ambassadors are Jeff Cox, Pam Davis, Ken Garrison, Kathy Flanagan, Darla Smith, Sonny Manning, and Donny Fraiser. Long-standing Ambassador fans may remember Jeff Cox and Ken Garrison, back for a second year with the group. The group is under contract from 3rd to 1st term - known in the business as a long-term-group.

Last but not long-term is the short-term-group the Messengers, who include Melody Bullock, Kim Frosland, Rob McIntyre, Rob Garrison, Doug Koch, and Marilyn Laeger. They are under contract from Independence Day to approximately one week

before school begins.

"Why is it we have these groups?" someone may ask. "P.R.," Raymond Lindley, Director of Communications, assures us. Lindley, whose hand has directed these groups for nearly two years, says, "The major listed reason why we do it is because we consider the travel groups as both a public relations and a recruiting tool for the college. Public relations in the sense that people out in the churches in our educational zone really like to see the representatives of the college. Plus, it's good music for them. You know, they like to hear these kinds of concerts."

Travel this summer will be relatively the same for both groups, concentrating on churches and trying to "hit every youth camp on our educational zone." Youth camps are great recruiting ground for these groups who take advantage of this by getting involved in the life of the camps, getting to know the kids, and giving out pictures of NNC.

Lindley says, "Most kids at youth camps where there is a college group really get impressed by those groups.

They see the lives they're leading, they're having fun, they want to be a part of what those kids are part of, and that's NNC.

Obviously, the selection process for 13 students who are to represent NNC both independently and collectively, could be no choir practice. On a Monday, about 40 students tried out before a panel of 9 judges. Lindley says that next year he would like to break this initial tryout into two parts, because, "hearing 40-60 people in one day, other than being, timewise, impossible, is really mind boggling."

During this initial tryout, judges looked simply for singing ability. 24 students were called back Wednesday, this time to evaluate personality as well as singing ability. "We wanted to see how they could think on their feet," says Lindley. "And so we would ask them a question to answer in front of all of us, like, 'when was the first time you heard an NNC traveling group and how did it impress you?' We feel it is important to communicate verbally as well as vocally."

ACROSS

- 1 Harem room
- 4 — a rule
- 6 British baby buggies
- 11 Book review
- 13 Lifted
- 15 Near
- 16 Precious stone
- 18 Robert — Niro
- 19 King of Bashan
- 21 Colorless
- 22 Narrow board
- 24 Possessive pronoun
- 26 Snare
- 28 Devoured
- 29 Unruly children
- 31 Pack away
- 33 Teutonic deity
- 34 Cripple
- 36 Time periods
- 38 Hebrew month
- 40 Eat away
- 42 Delineate
- 45 Deposit
- 47 Stalk
- 49 Mend with cotton
- 50 Let it stand
- 52 Dillseed
- 54 Sun god
- 55 Visitor from space, for short
- 56 Gridiron meetings
- 59 Negative
- 61 Salad ingredient
- 63 Wiped out
- 65 Less cooked
- 66 Printer's measure
- 67 Ethnic ending

DOWN

- 1 Anglo-Saxon money
- 2 Temporary route
- 3 News org.
- 4 Dry
- 5 Begin
- 6 Kind of court
- 7 Hurried
- 8 Helps
- 9 Ed.'s concern
- 10 Staid
- 12 Gt green
- 14 Hinder
- 17 Planet
- 20 Small weight
- 23 Note of scale
- 24 Siberian river
- 25 Antlered animal
- 27 Harbor
- 30 Misdeeds
- 32 Hospital section
- 35 Bullfighter
- 37 German district
- 38 Item of property
- 39 Wagerer
- 41 Travel
- 43 Long-legged birds
- 44 See 66 Across
- 46 Tellurium symbol
- 48 Fracas
- 51 Unfreeze
- 53 Fixed period of time
- 57 Southwestern Indian
- 58 Pin-up appeal, for short
- 60 Poem
- 62 RI's neighbor
- 64 Compass pt.

CROSS WORD PUZZLE

LET'S BOOGIE..



Next Crusader
 February 16

ASNNC Valentine Banquet

Monday — February 14

6:30 p.m.

Saratoga Restaurant

Caldwell

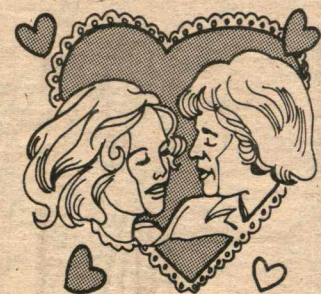
Speaker: Rev. Gary Henecke

Music by New Creation

\$5 per plate

tickets on sale in Student Center

singles welcome



Crusader Answer Man

Birchfield L. Bloom

Dear Crusader Answer Man.

Like most everybody these days I am having a hard time getting enough money together to pay for the fine, quality education I am receiving here at NNC. A few days ago I talked to an Army recruiter about joining ROTC and I wanted to know what you think. It sounds too good to be true of course, but they say they will pay my way through college and all I have to do is watch filmstrips on map reading and study up on being a "leader of men." When I'm done with college I get to be an officer instead of a lousy GI and I will be able to boss around all my friends who went into the Army right out of high school. When I come home after my summer training I will be able to wear a shiny new uniform and my kid brother will look at me with respect—for once! I will get to go to foreign lands and ride around in rickshas and a lot of oriental women will want to marry me so they can come to the United States. It sounds like a dream come true. Tell me what you think, Birch.

Spit and Polish

squeeze...

National Direct Student Loan) "would be as readily available next year as they were this year."

"We will see some reduction this year in the guaranteed student loan, however. This is the loan between your bank and you," Stallcop said.

The Pell Grant funding is

currently at an \$1,800 maximum grant per student at a higher educational school, such as NNC. The proposed level for this funding will apparently remain the same level next year. The formula which calculates the students eligibility will not otherwise be changed. Approximately, then, the same

number of students will receive aid, providing they are in the same financial situation.

The smaller grant programs will also not be changing for the course of next year. The Supplemental Education Opportunity Grant will remain roughly at \$140,000 next year.

The State Student Incen-

tive Grant is a small combination of federal, college, and state dollars all together in a pot which NNC draws upon according to its enrollment within the state. This grant will again remain at around \$25,000 for next year.

For students needing help with financial aid, the Financial Affairs office has begun a series of meetings in order to answer questions, and provide assistance in applying for financial aid. The first of which was held Tuesday, February 1, and the second will be held Wednesday, February 2 at 6:00 in Felter Lecture Hall.

Dear Polish,

It sounds like you and the Army were made for each other. Go for it.

Dear Crusader Answer Man,

Why do we have the death penalty, but we hardly ever kill anybody except once in a while and then the UCLA or the ACLU or somebody always steps in and tries to stop it? I think if we killed a lot more people who are on death row then not nearly so many people will want to be there. A good execution every other week or so would really show the criminals a thing or two.

The problem with the death penalty now is that we are all just a bunch of nice guys. We put the guy to sleep first, of all things, and then we inject stuff into his veins that lets him drift off into Never Never Land (or more likely the Bad Place). We want the death penalty to be a deterrent, right? We need to make executions much more nasty like the French did with their guillotines, so the criminals will think twice. Don't get me wrong, but I think a little pre-execution torture would go a long way also in deterring crime. We could put on torture exhibitions at half-time of football games to show that America always stands up for what is right.

That is my belief.

Al "Burt" Spear

Dear Spear,

Keep up the good work. Maybe one of these days America will wake up and listen.

How to be Christian in a Christian College

by Kirk Farnsworth, Ph.D.
Trinity College

(CCN) When students learn something in the classroom and see the opposite happening elsewhere in the institution, integration of *faith and learning* is destroyed!

Integration involves much more than intellectually learning about the relationship of biblical faith to various kinds of subject matter. It also, most basically, involves *living* out what is being learned, or applying it in one's life.

So, when what students learn as truth in the classroom is not lived out, or perhaps even contradicts what they see happening elsewhere in the institution, it seriously threatens what the Christian college is all about. It has often been said that more is learned outside the classroom than within it.

This suggests that *everything* that happens on a college campus is a learning experience, as we all know. But it also suggests that the understanding produced in the classroom becomes *real knowing* when it is applied and verified in the overall life of the institution.

What we teach and how we teach in the classroom set the tone for everything else that happens on campus — at least in the student's eyes. So, when students learn a Christian approach to business, leadership and the use of

resources, for example, and then see the opposite happening in Business Office policies, the leadership style of a dean or the president and the daily practices of the Food Service, it creates a tension that tears at the heart of the institution.

It is generally assumed that *faculty development* must receive our fullest attention if we are to improve integration in our Christian colleges. I would like to emphasize something that is just as important, however: *institutional lifestyle*.

It is not enough for an institution to merely confess the authority of Scripture in its Statement of Faith and for its faculty to rehearse in their classes that all truth is God's truth — we must practice those truths throughout the institution!

To paraphrase the prophet Jeremiah, let not the *wise* college boast in its new academic programs that will bring in all kinds of new students of its *fiscally* responsible administrative decisions that have allowed the budget to be balanced for the nth year in a row.

Let not the *mighty* college boast in its new buildings or its winning basketball team. Let not the *rich* college boast in its new approaches to donors or its large, secure endowment. It is not in these, in Jeremiah's words, that the Lord delights!

If we want integration to be truly central to Christian higher education, then let the college that so glories put this in its catalogue and its public relations materials, that we *understand* and *know* the Lord. We intellectually understand but also know through our daily institutional life that He — through us — practices loving-kindness, justice and

continued next page

Volunteers needed

By TERI RAEY
Crusader Staff

Student volunteers are needed to work with handicapped persons in athletic activity, including competition. Mr. Kelly O'Dell, Program Coordinator for United Cerebral Palsy of Idaho needs students who can work with patients. Most of the patients either have muscular dystrophy or multiple sclerosis, however, the handicaps may be the result of spinabifida, physical injury, or other handicapping conditions.

O'Dell wants to provide opportunities for handicapped people to compete with one another, with level

of performance to win determined by the person's level of functioning. Students are needed to provide one volunteer for each handicapped athlete.

For more information, contact Mr. Kelly O'Dell, Program Coordinator at the United Cerebral Palsy of Idaho Office, 100 North Latah, Boise, Idaho, 83706, phone 345-8070 (home 459-2434). O'Dell is also willing to provide additional information for clubs or classes with a five minute film, hand-out printed material, and talk to interested persons who are considering becoming volunteers.

Puzzle Answer

O	D	A	S	P	R	A	M	S
R	E	P	O	R	T	R	A	I
A	T	D	I	A	M	O	N	D
O	G	D	R	A	B	S	L	A
O	U	A	S	T	R	A	P	A
H	A	T	S	T	O	W	E	R
M	A	I	M	E	R	A	S	
A	B	G	N	A	W	T	R	A
S	E	T	S	T	E	M	D	A
S	T	E	T	A	N	E	T	R
E	T	H	U	D	D	L	E	S
T	O	M	A	T	O	E	R	A
R	A	W	E	R	E	M	E	S

**Valentine's
Day
Special**

(Offer good
February 14 only)

20% off
anything red or that
has red on it
(Textbooks not
included)

**NNC
Bookstore**

**heart
give away**

FEB. 14

Find your lucky
heart hidden in
items in the
store for 40%
discounts or
a free
gift

Silverwind

When Georgian Banov and his producers set out to form a new contemporary Christian band, they envisioned an international sound that couples rich, fresh vocals, power-filled progressive arrangements and incisive compositions. The group was christened Silverwind.

A dedicated band who wholeheartedly, with love and joy proclaim their faith, Silverwind has been touring North America since 1981, and has released two highly acclaimed albums, *Silverwind* (1981) and *A Song In The Night* (1982), on Sparrow Records. As their reputation grew, so grew the concert crowds and album sales until today they are one of the premiere groups in popular Christian music.

At the vocal heart of Silverwind is Betsy Hernandez, Patty Grambling and Georgian. They are old friends who previously sang together in a band called Candle. Each is a dedicated member of the Lindale, Texas-based Agape Force, an organization established to present the evidence of Jesus Christ.

Georgian is most often spokesman for the group. Born and raised in Bulgaria, Georgian was trained in classical violin from age five and played with symphony orchestras through junior high school. In 1964, he made a radical switch and formed the first official rock band in communist Bulgaria. As a singer and drummer, Georgian played concerts, appeared on television and made records until the government banned his group.

No longer allowed to perform, he enriched his talents by studying percussion, flute and piano and received an Associates Degree from a Bulgarian college allied with the Conservatory of Classical Music. But his heart was set on rock 'n roll, and he left Bulgaria with a music contract to perform in East Germany and never went back.

Several months later, hiding in a taxi cab, Georgian made a dramatic escape to the West. He traveled throughout Europe and in the early seventies, came to the United States with dreams of making it in rock 'n roll.

He moved to San Francisco to pursue his dream, and it was there that he met some Christians who he recognized had the freedom he so hungrily sought. He too became a Christian and is now quick to credit Christ for giving him a real freedom he could never find on his own.

Deciding to learn more about his new commitment, Georgian moved to Lindale to attend the Agape force missionary school where he became an ordained minister, and like Betsy and Patty, spent much of his time in street ministries.

But his musical gifts couldn't be hidden for long, and Georgian soon found himself writing and singing for Candle.

Betsy studied music, did some solo performing and songwriting before leaving her home in Idaho to join Agape Force at age 17. She became active in Agapeland productions and was singing as a soloist with Candle when asked to join Silverwind. Her clear soprano delivery and contemporary pop style qualified her for creating the "international" sound Georgian was seeking.

A member of Silverwind since its inception, Betsy now writes for the group and co-wrote with Georgian much of the material on Silverwind's two albums. Her husband, Frank, also writes for Silverwind and plays bass guitar for their eight-piece band.

Patty sang in choirs and musicals throughout high school in Edina, Minnesota, her hometown. She also sang with a Christian group and traveled as a soloist prior to joining Agape Force in 1979.

In January, 1982, Patty joined Silverwind, replacing Angie Whatley who left the group to marry. Georgian says Patty was unanimously selected, not only for her full, rich alto, but because her heart was already in the ministry.

For a former Bulgarian rock singer to blend with two American female singers is not an easy task. Weeks and weeks of practice in phrasing and pronunciation were required to polish Silverwind into the professional recording and concert group that they have become.

Christian ... righteousness.

Let us be able to state with confidence that we accurately understand God's truths revealed through the various disciplines and that we concretely know Him through His provision as we apply those truths to our institutional life together.

Again, paraphrasing Jeremiah, let the college that glories boast not in wisdom, might or riches. Rather, let it (us) boast in personnel policies and administrative precedures based on loving-kindness. Let it (us) boast in academic departments that teach their majors how to apply what they have learned in working for justice in the world around them. Let

it(us) boast in an educational community where caring relationships among brothers and sisters foster righteousness in each other.

And let us encourage faculty members and administrators who -- no matter what the cost -- will uncompromisingly "seek first the kingdom of God and His righteousness;" Who will visibly demonstrate -- beyond all doubt -- the lordship of Jesus Christ in calling into question our own unjust and un-Christlike international practices and in contributing to the witness of our institutional lifestyle to our students and the watching world. "For in these I delight," says the Lord.

Would you like to be really popular?

Crusader has the perfect opportunity for social-climbers. Join our elite staff and see the campus!

We have two job opportunities open:

1. ASNNC Executive Proffreader/Neat Person. (Must be able to spel.)
2. ASNNC Administrative Circulation Director of Mailing Things. (Must not hum, and have some stamp-licking ability.)

Please inquire in our office, or send your name (plus a nominal kick-back) to Box "C".

Be somebody. Be all that you can be (hum hum hum) 'cause we need you... on the Crusader, the Big Mac of newspapers.

Silverwind In Concert



February 8

7:30 p.m.

Montgomery Fieldhouse

Student prices

\$3.50 in advance

(available at NNC Bookstore)

\$4.50 at the door



Crusaders fare well on road

By KEN HARDEE
Crusader Staff

The Crusaders continued playing games on the road the past few weekends winning two of four. NNC ventured to LaGrande, Oregon to defeat Eastern Oregon State College, 67-64, in overtime, on Jan. 13. They also ended their January weekends on the road by trouncing Judson Baptist, 84-65, in Portland. The Crusaders' season record now stands at 13-8.

In LaGrande, Daryl Crow canned two free-throws with four seconds remaining in overtime to seal the Crusader victory. EOOSC, just 1-12 on the year, battled NNC all the way. The Crusaders took a one point lead into the locker room at the end of the half. They were out-scored by one in the second stanza, though, as Eastern forced the game into overtime.

A Mike Terpstra jumper gave the Crusaders an overtime lead they would never relinquish. Eastern scored late in the extra period to pull within one, which set the stage for Crow's free-throws.

J.R. Harris led the team in scoring with 18 points. Jeff Smith, 14 points, and Terpstra, 13 points, also scored in double figures. Harris and Terpstra also pulled down seven rebound-

ds apiece.

The Crusaders had trouble with their transportation to Portland, then lost to the University of Portland, 83-59. After leaving LaGrande on Thursday night, NNC's van broke down. They received a tow to Arlington, Oregon, where they arrived around 4:30 a.m., and spent the night. After spending most of Saturday, Jan. 15, in a garage, they arrived in Portland late in the afternoon.

The effects of the ordeal began to tell on the Crusaders in the second half of their contest. NNC shot only 31% from the field and 11 of 23 from the line, while being outscored 51-31 in the second half. Terpstra led the Crusaders in both points and rebounds with 26 and six, respectively.

Columbia Christian came from 12 points down in the first half to upset the Crusaders, 68-66, in Portland on Jan. 21. NNC came out hot as Terpstra and Rob Richardson combined for 20 first half points in building a 31-19 lead with four minutes left in the first half. The Crusaders' lead slipped to four at, 35-31, by halftime.

Columbia took its first lead of the game, 50-48, with five minutes left. It was the last time NNC would be ahead. A 20-

footer by Crow with seven seconds left brought the score to its final margin.

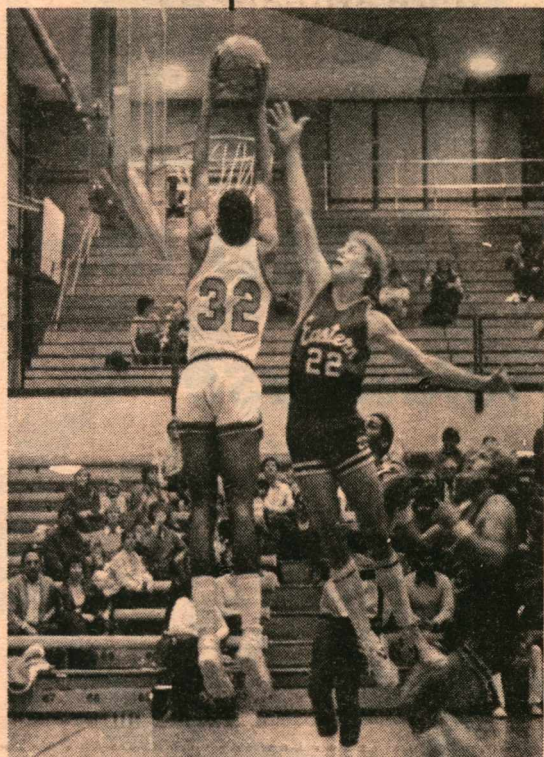
Terpstra again led NNC scorers with 18 points. Harris snagged a game high 14 rebounds as well as adding 16 points.

NNC pulled together to defeat Judson Baptist, 84-65, on Jan. 22. Terpstra dominated the flow of the game as he scored 28 points and pulled down 17 rebounds.

The Crusaders didn't dominate the game, however. The lead changed hands ten times in the first half until Terpstra scored eight points in the final six minutes to give the Crusaders a 40-36 lead.

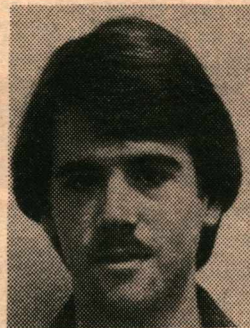
Judson came back in a hurry in the second half assuming a 49-48 lead with 16 minutes left. It was short lived, however as Terpstra, Harris, and Richardson led a flurry of scoring to give NNC some breathing room. Tony Stone, Crow, and Dan Hawker combined for eight straight free throws in the final 1:46 minutes to provide the margin of victory.

Crow's four-for-four performance at the line against Judson broke the school record for consecutive free throws with 23. Stone set the record earlier in the season with 21. They both are shooting 96.8% from the line this season.

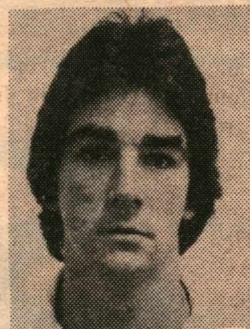


Rob "Hollywood" Richardson goes up for a stuff late in the first half against E.O.S.C. Richardson now has 30 dunks for the year.

All district players selected



BRYAN WHEELER



STAN PICKELL



ERIC HOYLE

Three members of the 1982 NNC soccer team have been selected to the 1982 NAIA District II Soccer All-Star Team. The team was announced in Portland last week.

Forward Bryan Wheeler, a senior, was selected for the second consecutive year to lead the selections. Joining Wheeler on the second team were midfielder Stan Pickell and Fullback Eric Hoyle. Pickell and Hoyle are sophomores.

The Crusaders finished third in the district but tied league champion Willamette and fourth-place Lewis & Clark for number of players selected.

Willamette coach Brad Victor was named Coach of the Year, an honor NNC coach Art Horwood received last season when the Crusaders won the District II title.

Personal Ads

Sweet Nothings

My Dearest Trashman Tripp:

Whenever I catch a glimpse of you emptying the rubbish I get the uncontrollable urge to grab my wastepaper basket and meet you at the garbage bins. Just the sound of your voice crying "Man in the dorm" sends shivers up and down my spine and my heart racing. I love the way you carry your cans. You can throw me around any day!

BMV: Your Trashy Admirer



A. J.

You're the only valentine for me.

A. A.



S. S.

ditto

A. A.



T. T.

ditto

A. A.



Judy,

In this world of slime and other really awful things, I can understand why you reacted the way you did last Tuesday night in Mangum lobby. But still, I must repeat what I told you there: You are God's woman for me. I don't understand why you can ever question this — I really feel it inside. I'll call you tomorrow (after 8 p.m.) and we can go have a char-burger and discuss it.

**Your destiny,
Tom**



Bruce,

You don't know me but I've been in love with you since junior high church camp. I do want to marry you if things work out that way, but I'm too scared you won't like the way I look. Could you give me the physical descriptions of the ugliest girl you would ever think of marrying? Just leave a note taped to the underside of the drinking fountain in the student center.

Your Jr. Hi Camp Queen

Lula-kid
coming soon

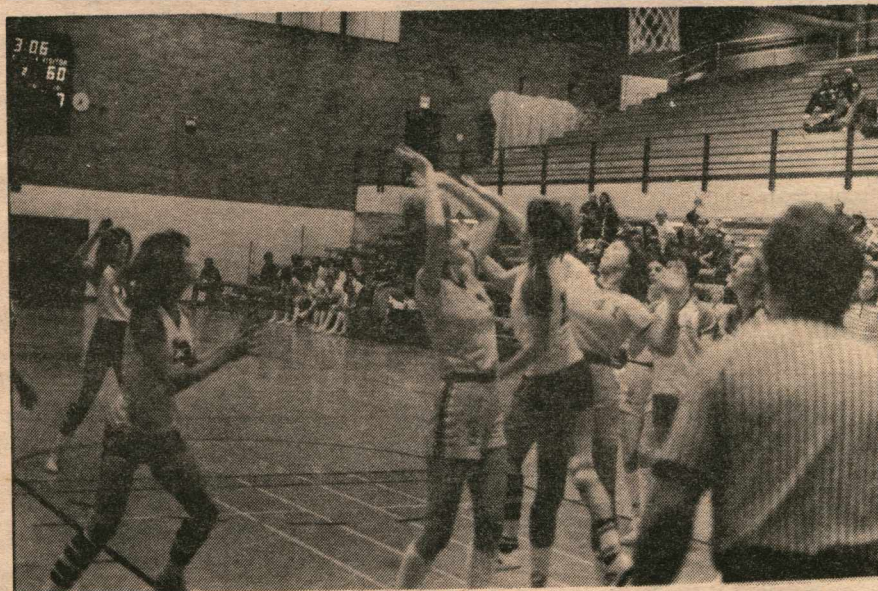
Women's team makes a comeback

By NACHELE ROBERT
Crusader Staff

NNC's women's basketball team has won four out of its last five games. After narrowly being defeated by Whitworth College on January 14 at home, the Crusaders have come back with four straight victories. They beat Whitman College the next night on NNC's home court, Pacific University both home and away, and Judson Baptist on Judson's home floor.

The Crusaders lost a close game to a very tall Whitworth team. Shelley Bartlow and Jenifer Freeman led NNC's scoring with 19 and 17 points respectively. Freeman led in rebounds with a total of 19. Their efforts were not enough though. NNC was down by one at half, and finally lost by three, 78-75. Coach Martha Hopkins said, "It was a good game to watch, but, of course, a victory would have been nice."

Following their loss to Whitworth, the Crusaders bounced right back to thrash Whitman the following day, 83-50. The first half of the game was tight with NNC having only



a four point lead at half-time. The second half was a different story as the Crusaders overcame Whitman quite handily. In the second half the Crusaders more than doubled Whitman's score. NNC had five people scoring in double figures while Whitman only had two.

The Crusaders were led in scoring by Jenifer Freeman, 19 points, Nikki Trautman, 16 points, Brenda Labrum, 14 points, and Shelley Bartlow, 14

points. The fifth player in double figures was Judy Gross who contributed 11 points.

Rebounds played a major part in this game as NNC had 67 to Whitman's 31. Bartlow and Freeman led the team in this area with 14 each.

"The best part about this game was that each team member was given a chance to play," said Coach Hopkins.

After thrashing Whitman the Crusaders barely gained a victory against Pacific University on January 21. The Crusaders went into the locker room at halftime behind, 35-31. The Crusaders had trouble during the first half controlling the ball. "We had too many turnovers," commented Coach Hopkins.

Freeman, Gross, and Labrum combined for 46 points out of 78 of NNC's points. They had 18, 16, and 12 points respectively.

The Crusaders were still behind with two and a half minutes left before they came back to win the game, 78-74. Coach Hopkins said, "Instead of losing another close one, it was exciting to come from behind and win."

The Crusaders were led in rebounds by Bartlow with 13 and Freeman was close behind with 12. The Crusaders' high free-throw percentage helped them obtain this victory. They were well above their season average of 57% with a free throw average of 77%.

After a great performance against a tough Pacific team, the Crusaders did not play as well against Judson Baptist the following day. Although the Crusaders

NNC defense thwarts a Willamette offensive effort in their game Friday night. Jenifer Freeman led the Crusaders with 19 points as NNC crushed Willamette 81-64. The victory evened the crusaders record at 8-8.

WILLAMETTE

Oliver 1, Papp 13, Binnie 6, Lum 12, Hollan 16, Delmodis 4, Seuss 12.

NNC

Grim 4, Hoover 14, Weigelt 8, Martin 4, Uranga 4, Gross 8, Labrum 6, Wilson 4, Bartlow 10, Freeman 19

won 80-67, Coach Hopkins said, "We played a sloppy game. We played down to their level." The sweetness of victory was a little sour since the team did not play to their capabilities.

The four scoring leaders—Bartlow, Labrum, Wilson, and Freeman—were very close with 15, 14, 13, and 12 points. Judy Gross and Peg Hoover led in assists with five each while Freeman dominated the boards with 20.

The fourth victory came on January 24, when NNC once again defeated Pacific University. This time the game was quite a bit different. Pacific did not seem to play as well as they had

just three days before. "Pacific might have been hurt because they arrived at the gym only a half hour before game time. They, probably, were not mentally prepared," commented Coach Hopkins.

The Crusaders plainly controlled the game. They led 39-29 at halftime. This lead was too much for Pacific to overcome. The Crusaders won by a score of 72-60.

Three NNC players hit double figures, Freeman, 24 points, Bartlow, 18 points, and Hoover, ten points. Freeman also led in rebounds with ten. Hoover led in assists with seven

while Linda Grim followed close behind with six.

The Crusaders have seven wins and eight losses in NAIA play. This record puts them in the middle of District Two standings. The Crusaders are second in both rebound margin and field goal average in their district. They also have two players who are in the top four rebounders for the district. Jenifer Freeman is first while Shelley Bartlow is fourth.

Coach Hopkins said, "If we can continue to win and move up in district standings, we may be able to qualify for the district tournament."

Indoor soccer arrives

By KEN HARDEE
Crusader Staff

Ten players cover the gym floor, dribbling a ball, and trying to score. Intramural basketball, you say? Try indoor soccer. That's right, indoor soccer, one of the fastest, most rapidly rising sports in fan popularity, has come to NNC.

The Crusader soccer team has formed its own league. Four teams with six players each make up the competition. Their playing field is the gym floor. Its boundaries—the walls and bleachers—are the players' boundaries. The hall is the only place that is off limits.

With a three by three goal taped to each wall and no goalies the game moves pretty fast. "It's a great way to condition because it's such a fast game," commented Sven Olsen. "You learn to move without the ball, move to

open spaces," added Dave Daniels.

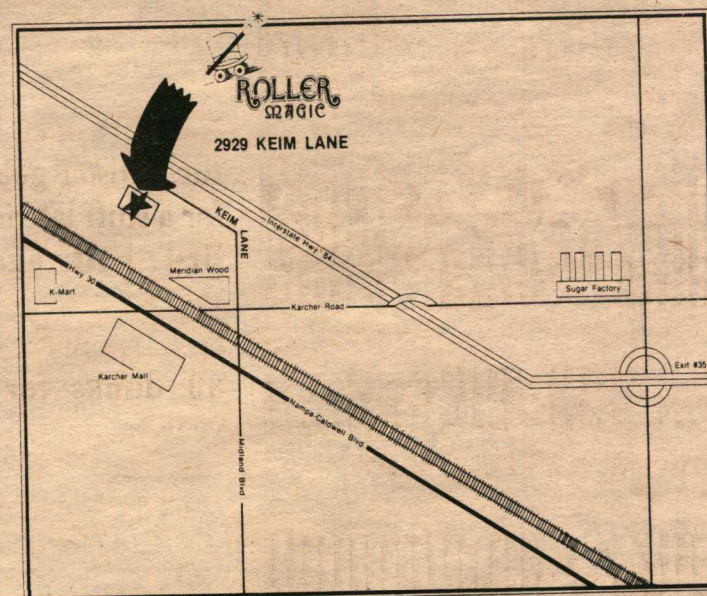
The game is also very similar to hockey. With the ball bouncing off the walls and bleachers, bodies seem to bounce off those same surfaces. The penalty for this roughness is for the offender to leave the court. This leaves his team short a man for the duration of the penalty. This results in a "power play" for the opposing team as in hockey. "However," Daniels said, "you have to hammer a guy pretty hard to get a penalty."

Another rule requires all goals to be scored from farther in than the half line. Also an offensive player is not permitted inside the key (extends from basketball key to the wall) unless a defensive man is also present.

The games are played at noon and 1 p.m. on Saturday afternoons. Spectators welcome!



**NNC students
just \$1 anytime**
with student ID



Coming Soon: **Water Magic**

Crusaders dominate E.O.S.C.

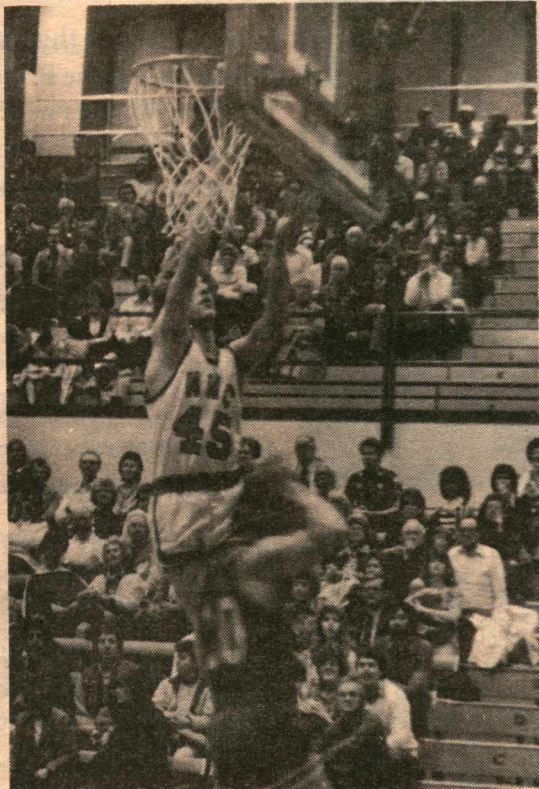
By KEN HARDEE
Crusader Staff

Using their inside game to perfection the NNC Crusaders crushed Eastern Oregon State College in their own gym, 95-65, on Jan. 28. Mike Terpstra and Rob Richardson both reached double figures in a second half blow-out. The win raised the Crusaders' season record to 14-8.

"I'm really pleased with the way we're working together," commented head coach Gary Matlock. NNC team members assisted each other to easy inside buckets in building a 12 point halftime lead. The Crusaders shot 63% from the field in the first half.

"We only had two turnovers in the first half," explained a pleased Matlock. Terpstra had 12 first-half points, including three lay-ins. While Richardson had the same number of first half points, half of them were on slam dunks.

Richardson, Jeff Smith, and Terpstra pushed the lead to 16 early in the



Rob Warwick attempts a lay-in after a steal against E.O.S.C.

second half. Just as it looked like EOSC might roll over and die, they scored eight unanswered points to narrow the gap to eight with 17 minutes left.

"We were a little lackadaisical offensively at the start of the second half," said Matlock.

Instead of folding and letting Eastern make a game

of it the Crusaders tightened up. "We're playing with more patience all the time," said Matlock. Shooting 64% from the field NNC steadily pulled away from its opponent. With 3:42 to go in the game its lead had extended to 77-56.

At that point, Matlock emptied the bench and the fresh members of the varsity squad poured it on. Led by freshman Rick Young, who finished with ten points, they scored ten unanswered points in two minutes. The game ended on a 30-footer by Kerry Fulcher.

The victory was a total team effort and all the Crusaders scored. NNC held a 38-27 rebounding edge as Terpstra pulled down 12 and J.R. Harris added seven. Smith gathered five key assists to go along with his 16 points.

"It makes a coach happy if he can see improvement," commented Matlock, "I'm happy."

By KEN HARDEE
Crusader Staff

The Crusader wrestling team traveled to Willamette University Jan. 21, and placed four wrestlers on its way to gaining eighth place out of 16 teams. Dean Carlson took the runner-up spot at 177 pounds to pace the Crusaders. Two 134 pounders claimed honors for NNC as Glen Spinnie came in third with Dennis Schults right behind in the fourth spot. Scott Gregory finished fifth at 190.

The trip also proved to be costly for the Crusaders as three wrestlers were injured. Ross Saldana, 126-118 pounder, dislocated an elbow and may be out for the season. "He'd like to come back but Doc Moss says he'll probably miss the rest of the season," said coach Jameson.


Heavyweight wrestler Tom Gudmunson suffered a hairline fracture of the elbow. He is expected to be back for the district tournament. The third injured wrestler, Schults, is also expected back for district action after he recovers from cauliflower ear.

Coach Jameson hopes his wrestlers can come through at the district tournament on Feb. 18-19 at Willamette University in Salem, Oregon. Carlson, who also earned runner-up honors at the Eastern Washington and Clackamas tournaments, is expected to challenge hard for a district championship. Gregory, who earned a fourth place finish in the Clackamas tournament and Spinnie are also expected to do well.

Although the Crusaders compete in a district with about ten teams Jameson finds it difficult to convince an opposing team to travel to Nampa. "Most of the teams are in the Portland area. They don't want to take a ten hour trip when they can just travel a half hour to wrestle," lamented Jameson.

Consequently NNC may not have a home meet this year. They have one scheduled for Feb. 5, but opponents are reluctant to enter. "Right now it doesn't look good. We may only be able to have a three team meet, if even that," commented Jameson.

FEBRUARY

			WEDNESDAY	THURSDAY	FRIDAY	SATURDAY
			CANDLEMAS DAY	SURRENDER OF HUME CASTLE 1651	SOSC BB-W-6PM(N) SOSC BB-M-8PM(N)	MENS BASKETBALL 9-12
			COINS CUT INTO HALVES AND QUARTERS	ST. BLAIZE IS TORN FROM ROLE AS BISHOP AND FORCED TO EXTRACT THORNS AND BONES 316	KING WILLIAM IV STUTTERS IN THE DARK-1836	OREGON TECH-BB-W-6PM(N) OREGON TECH-BB-M-8PM(N)
			2	3	4	5 SENIOR SLICK
SUNDAY	MONDAY	TUESDAY	ALL WE ARE IS DUST IN THE WIND WEDNESDAY	PROGRESS REPORT PERIOD		LINCOLN'S BIRTHDAY
PRIESTLY, THE CHEMIST AND ELECTRICIAN DIED-1804	CONVOCAION PRESENTATION OF SWEETHEART COURT	SHROVE (CONFESSING SINS) TUESDAY	DANIEL THE EMINENT BORN-1700		SOUTHERN IDAHO-BB-W-6PM(N) COLUMBIA CHRISTIAN BB-M-8PM(N)	MENS BASKETBALL TOURNAY 9-10, 1-2
CHRISTIAN IS BORN AND STUDYING RELIGION BY AGE FOUR-1721		MENS WING VOLLEYBALL 9PM	9	10	11	BEST WESTERN-UNIVERSITY INN OPEN TF(A)
6	7	8 ASHNC CONCERT SILVERWIND 7:30PM	9	10	11	JUDSON BAPTIST-BB-W-6PM(N) JUDSON BAPTIST-BB-M-8PM(N)
			ABSOLUTELY NOTHING DAY			
CATHERINE LOSES HER HEAD THAT VALENTINES DAY MAY BE HAPPIER FOR HENRY	ST. VALENTINES DAY	PROGRESS REPORTS DUE	<div style="border: 1px solid black; padding: 5px; text-align: center;"> SPiritual LIFE WEEK WITH DR. WILLIAM GREATHOUSE </div>			
	COOKS CONCLUDING COLLISION-1729					
13	14 VALENTINE BANQUET	MENS BASKETBALL CHAMPIONSHIP GAME A&B	15	16	<div style="border: 1px solid black; padding: 5px; text-align: center;"> RY FEBRUARY </div>	
		COLLEGE OF IDAHO BB-M-8PM(N)	15	16		