



# THE OASIS

1 9 4 3





PRINTED AND BOUND BY  
THE CAXTON PRINTERS, LTD.  
CALDWELL, IDAHO





The 1943

*Orion*

NORTHWEST NAZARENE COLLEGE

*Pampa Idaho*

EDITOR *Lewis Roberts*  
BUSINESS MGR. *Thomas Leupp*



# Foreword

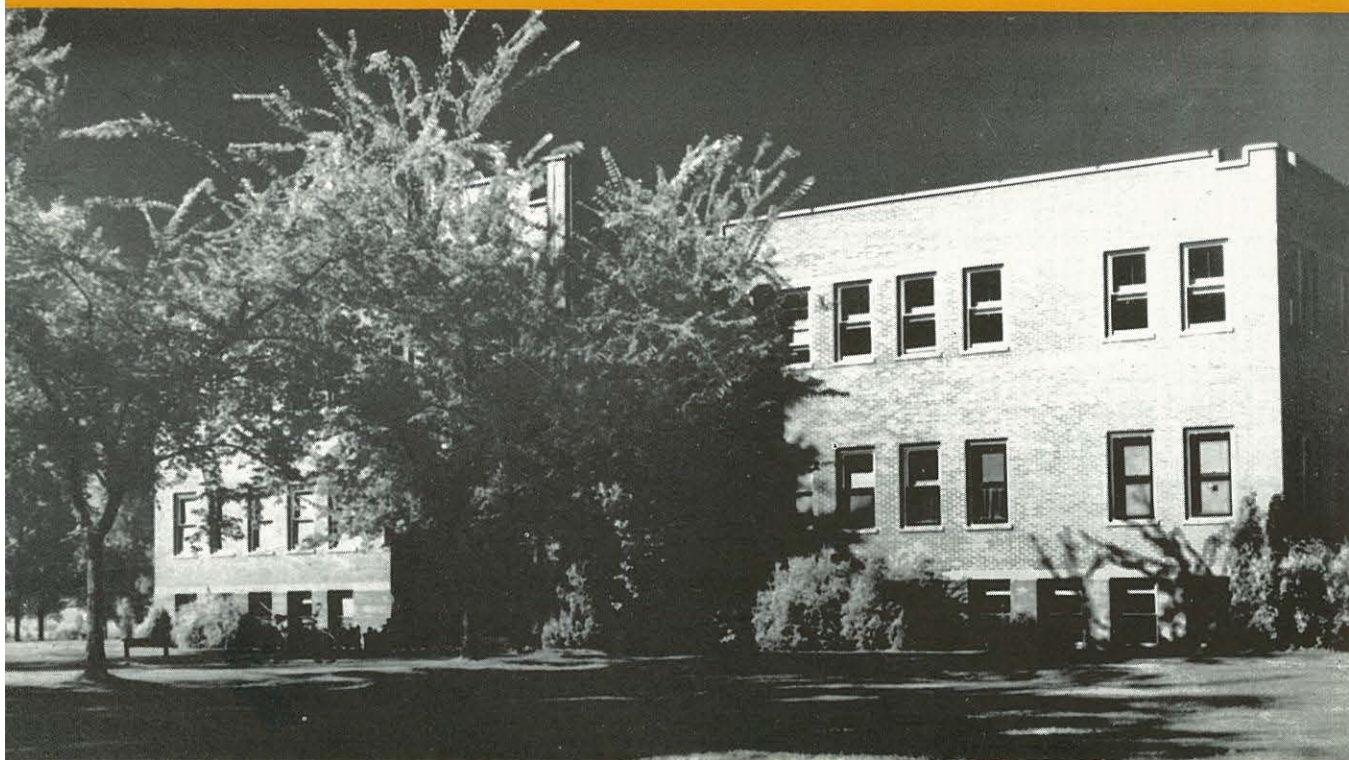
With skillful, loving care, the infinite hands of the Potter shape the human clay at N. N. C. into personalities of eternal worth. The influence of a Christian College are made manifest as the vessel emerges strong and sure, ready to be tested in the crusade for truth and right.

This year students became aware of far-reaching changes as they watched their college become geared for war-time education. The erstwhile hazy anonymity of international affairs faded into the past as each week found vacant places left by some student who had suddenly exchanged his flashy college clothes for the somber blue or khaki of our armed forces.

Despite this transition, much of the familiar pattern of college life has remained unchanged.

Tennis courts still resound to the thud of a hard hit ball, the arched beams of the gymnasium echo with shouts of traditional Crusader cheers; breathless students still rush into classes late as a result of an extended corridor conversation; and the familiar fumes of second floor chem lab continue to pervade the halls.

These are small things that we'll somehow remember, recalling that they remained unchanged in the midst of an ever-shifting scenario. We hope that this book has succeeded in catching a bit of the atmosphere that permeates the campus, and that each page may bring back a treasured memory of some professor, classmate, or event that endeared N. N. C. to you.









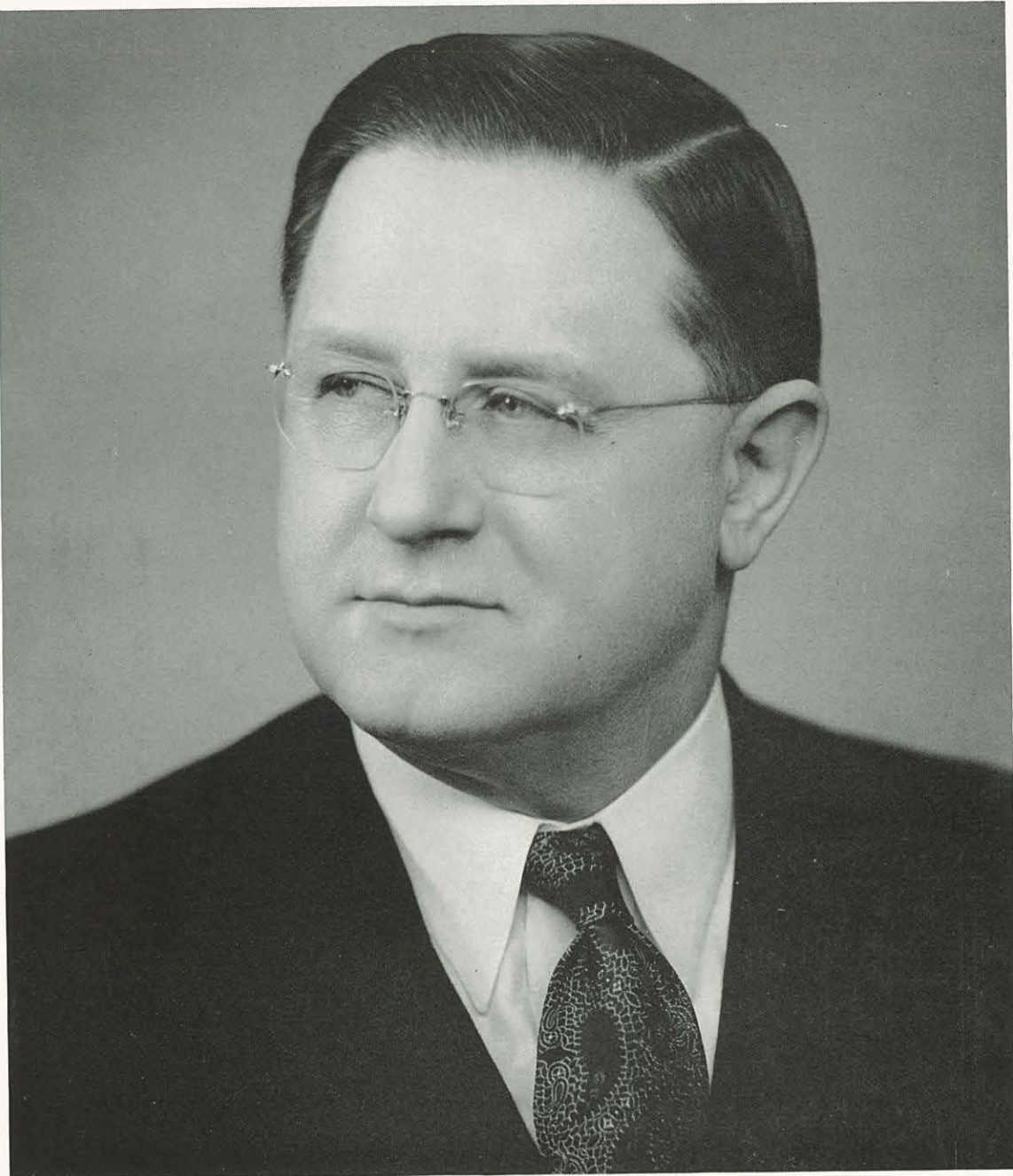
# Dedication

Efficiency and thoroughness have characterized his tenure of office; hard work, untiring effort, and a desire for progress have been his constant companions; friendliness, sincerity, and patience have epitomized all personal relationships.

Because he has safely piloted N. N. C. through many a financial crisis, because of unswerving loyalty and service to the school, and because he has proved to us that Christian ethics can be applied successfully in the realm of business, we dedicate this OASIS to our bursar, Glenn Siefarth.











# *C o n t e n t s*

Book 1 — *Administration*

Book 2 — *Classes*

Book 3 — *Departments*

Book 4 — *Organization*

Book 5 — *Activities*

Sunlight through French doors at the South entrance of Emerson Hall silhouettes a small group of students chatting between classes.



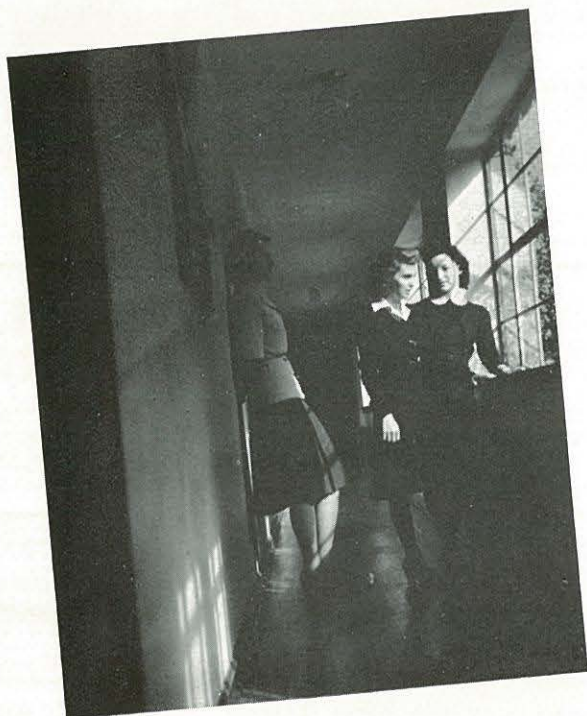
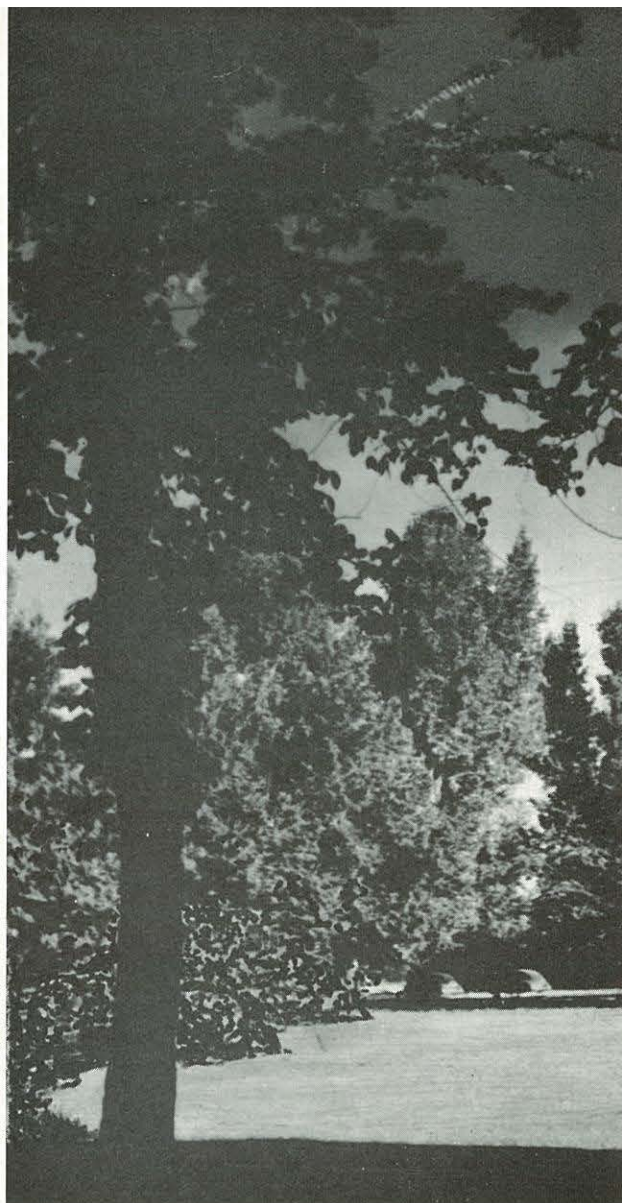




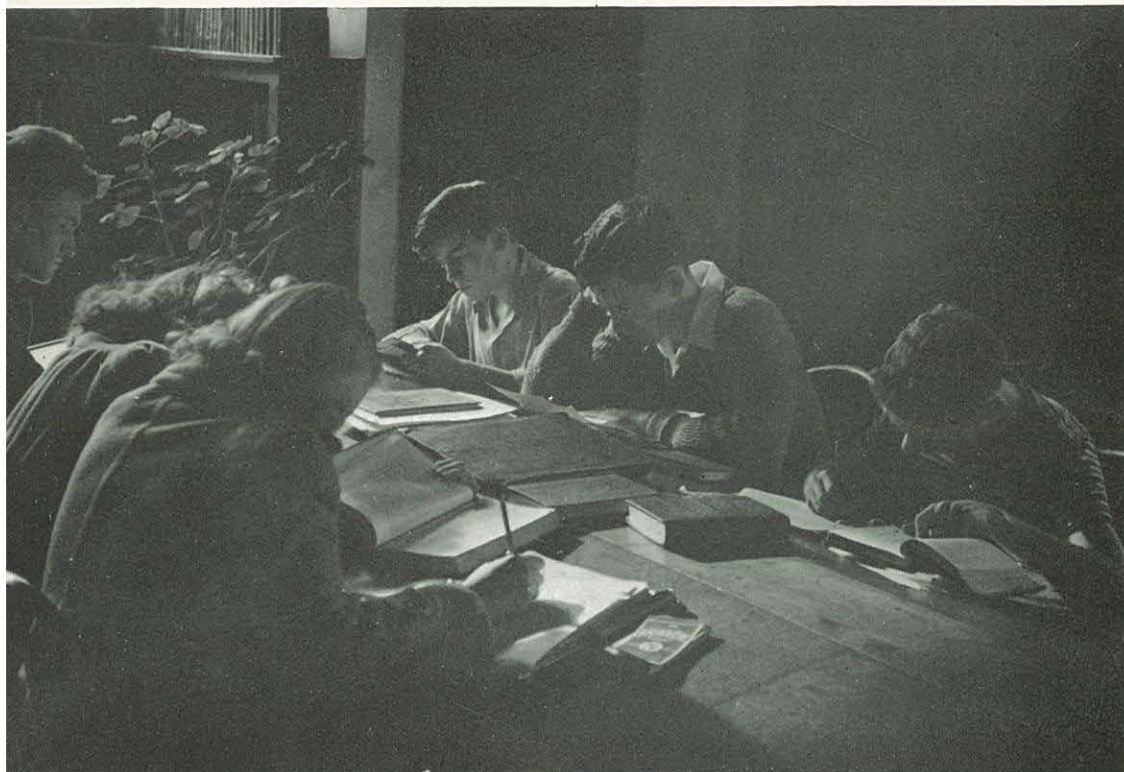
A lazy Sunday afternoon spent in a friendly sort of way, when lads and lassies gather in the parlor of Morrison Hall.



Late afternoon sunlight, streaming across the spacious court, enters the windows and catches this little group in the north corridor of Morrison Hall.





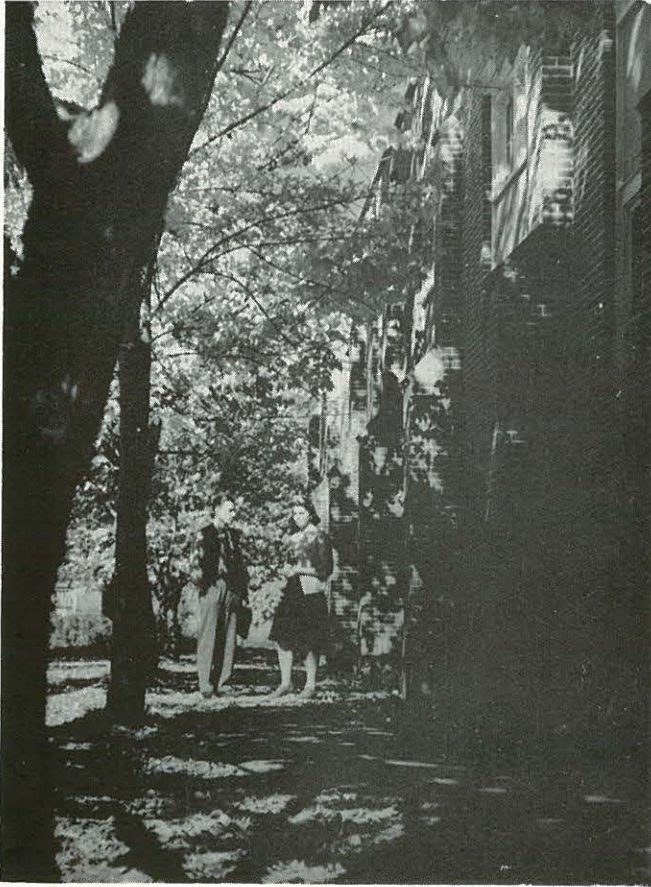


A book....a pencil....a thought....a  
little studying or a bit of loafing....it's  
all in the library.

An unforgettable phase of college life is  
the fellowship found in studying, working,  
or playing; acquaintances become lasting  
friends as we live each day together.



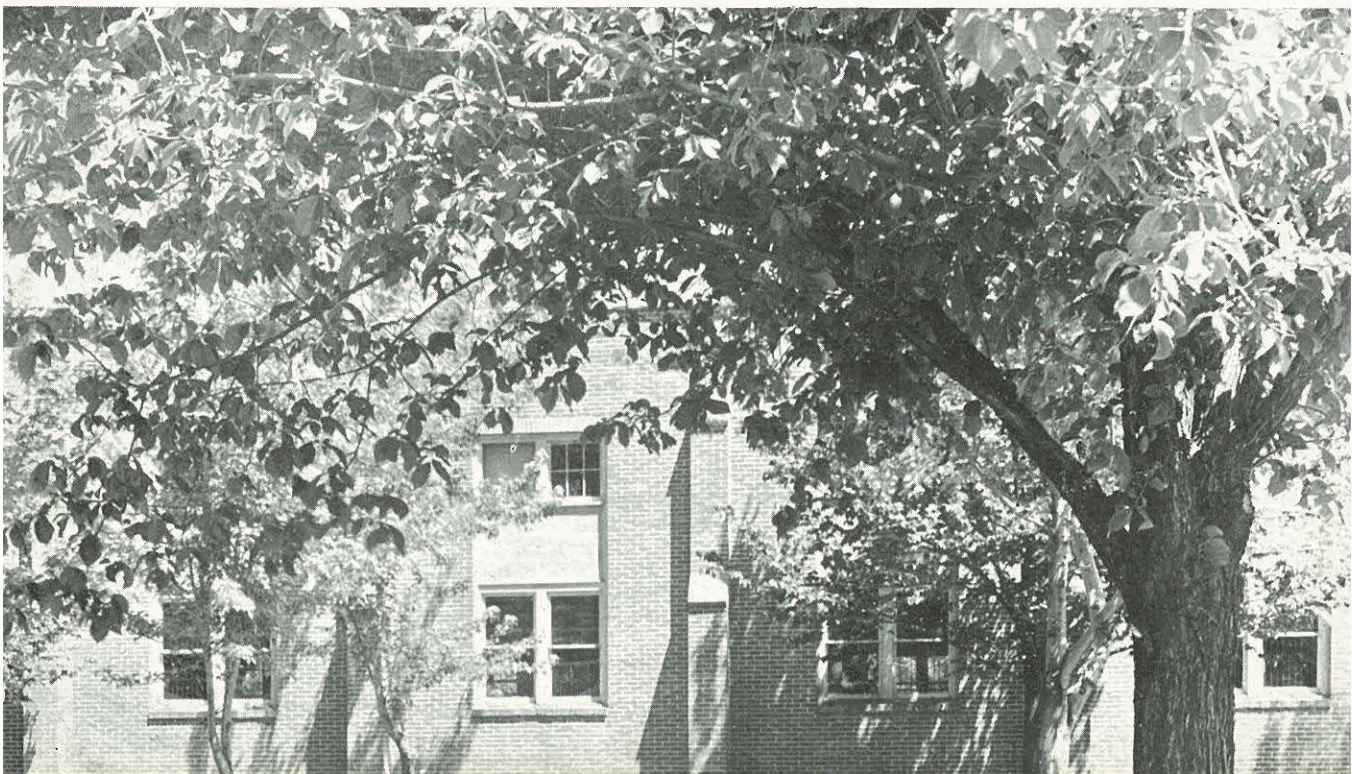




As the afternoon shadows fall, students pause on the pathway leading past the gym to talk over the happenings of the day or to discuss forthcoming activities.

Basketball—volleyball—gymnastics—young bodies and exercise go together. That's why N. N. C. has a good gym, and incidentally good teams.

Situated securely in the maple grove this building adds a finishing touch to a growing campus.







From brick house one may gaze across a cool green campus to see Hadley Hall, the Music Hall, and Gideon Hall as they are blended together in the surroundings of college life.



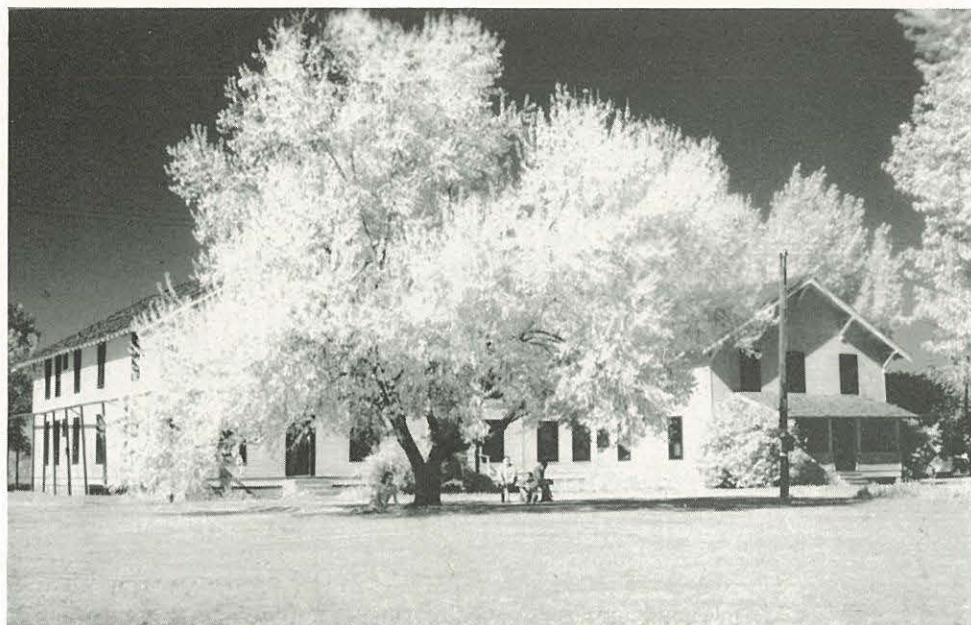




When a record enrollment strained dormitory facilities at the beginning of the school year, the "brig" was used as a men's hall, and later drafted as a home for the naval cadets during second semester.







Classes finished, residents of Hadley Hall rest in the shade of the silver-green Russian Olive tree that stretches to the sky in stately splendor.



Always buzzing with activity, and possessing the busiest telephones on the campus is Morrison Hall, where N. N. C. co-eds hang their bandannas and park their saddle shoes.





Slender branches of campus trees weighted down with a fresh snowfall create delicate designs against the clear blue sky.







Sentries by day and by night at  
the East entrance.



Soft fluffy designs of  
snow flakes and frost  
blanket the campus in  
sparkling splendor.



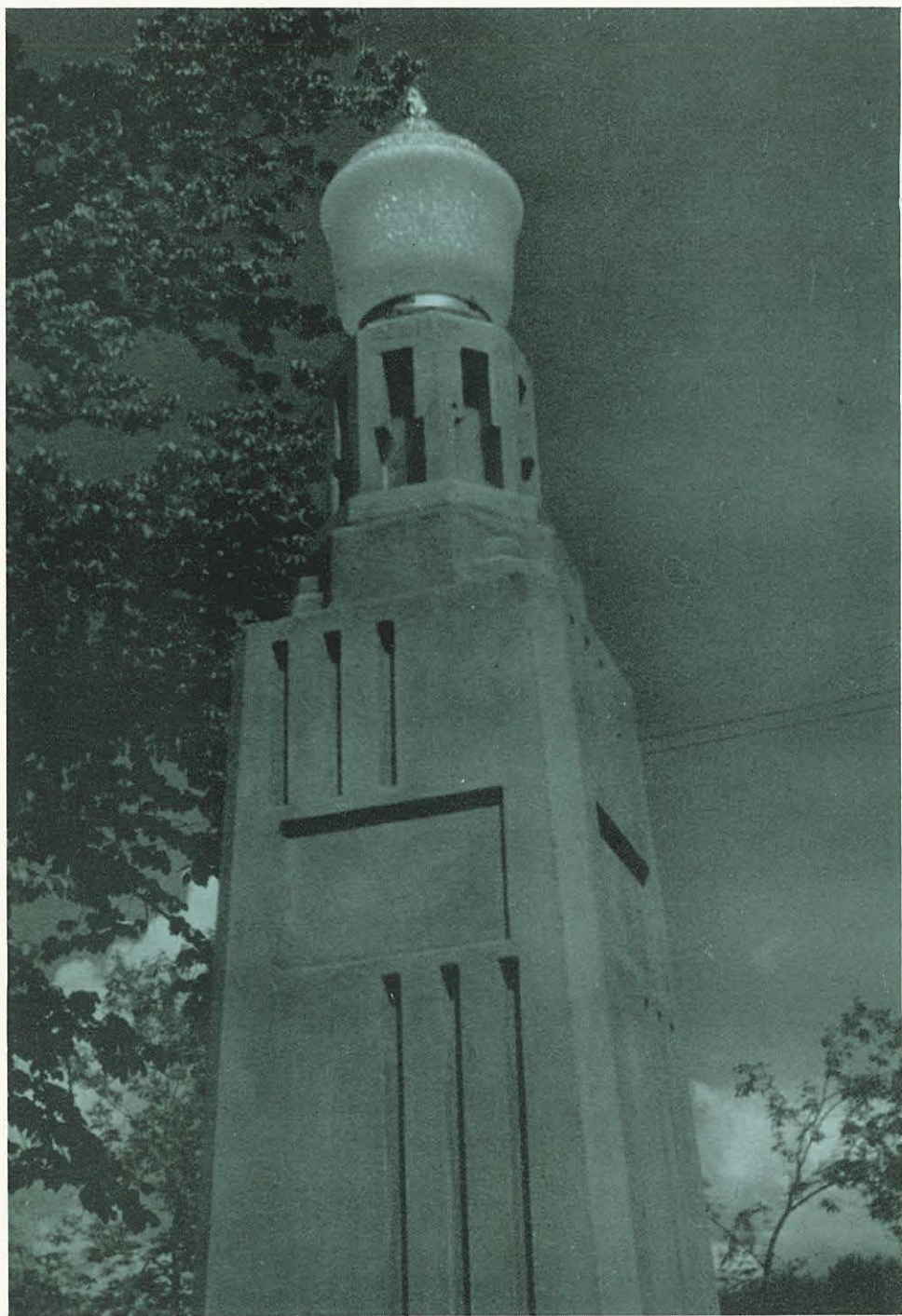




As the sun shoots its last rays over Idaho hills students enter the west entrance of the college dining hall where evening repast will be enjoyed. Dining room furnishings, a combination of chromium and blue leather blended with glazed brick walls, radiate a colorful atmosphere for each day's fellowship.











---

*Dr. Lewis T. Corlett*

---



# *P r e s i d e n t*

Colleges like Northwest Nazarene College are needed more today than ever. This war is being fought over the ideals and principles for which it stands. Society and civilization have neglected the principles of Christianity and the present confusion and chaos is the result. There must be a greater emphasis on these principles both in theory and practice. Northwest Nazarene College has a record of upholding and propagating these and is planning to march forward with a greater determination to evangelize and christianize the world.

It has been a pleasure to labor for the College this year; it has been a wonderful year of progress and blessing. This is truly a tribute to the work of my predecessor, Dr. Russell V. DeLong, for the splendid manner in which he developed the loyalty and enthusiasm in every section of the Educational Zone. The present progress has been the natural result of the good foundation laid in the past and the outgrowth of the present enthusiastic loyalty of the constituency.

The prospects for Northwest Nazarene College are the greatest in her history. Individuals must give to society a higher standard of living and that must be Christian if the future is to be more peaceful than the present. This character development program is the prime purpose of the institution so the opportunities for the College are greater now than ever before. God has answered prayer and opened the doors of opportunity; the people have responded nobly; and truly the future is "as bright as the promises of God."

YOUR PRESIDENT,

LEWIS T. CORLETT







MALLALIEU A. WILSON  
A.B., A.M.  
Professor of Speech



LEWIS T. CORLETT  
A.B., D.D.  
Professor of Theology



U. E. HARDING  
Assistant Professor of  
Theology

RALPH E. ALLISON  
A.B.  
Professor of Physics and  
Mathematics

DENISE RINKER ADLER  
A.B., M.A.  
Instructor in Business  
Administration

LLOYD D. ADLER  
B.S., M.S.  
Supervisor of Physical Educa-  
tion and High School Critic  
Teacher (serving in the armed  
forces)

MAY E. BOWER  
A.B., A.M.  
Professor of Education and  
Sociology



BERTHA R. DOOLEY  
A.B., A.M.  
Professor of English



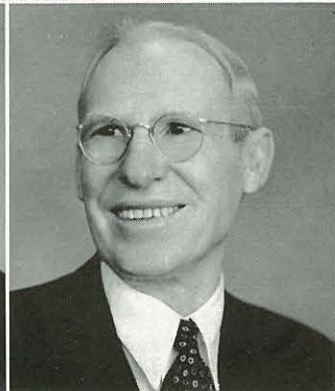
RUTH L. FRITCH  
A.B.  
Professor of Home Economics



ELLA LEONA GALE  
A.A.G.O.  
Professor of Pipe Organ,  
Piano, and Theory of  
Music



JOSEPH E. JANOSKY  
A.B., B.C.S., M.C.S.  
Associate Professor of Busines  
Administration.





# *Faculty*

RAY S. MILLER  
A.B., A.M.  
Librarian, Professor of  
Religious Education

W. W. MYERS  
B.O., A.B., A.M.  
Associate Professor of Speech

OSCAR F. REED  
A.B., Th.B.  
Professor of Psychology and  
Biblical Literature

MAUDE R. RICE  
B.S., M.S., Ph.D.  
Professor of Chemistry



ROGER TAYLOR  
A.B., B.M.  
Professor of Music

M. JEWELL WILSON  
A.B.  
Assistant Professor of  
English

CORAL O. YOUNG  
B.S.  
Professor of Elementary Edu-  
cation and Director of Train-  
ing School



# *Faculty*

THELMA B. CULVER  
A.B.

Director of Secondary Teachers' Training and High School Critic Teacher

DORYCE ROSS FRASER  
A.B.

High School Critic Teacher

GUY E. SHARP  
A.B.

High School Critic Teacher



FRANCIS C. SUTHERLAND  
B.A.

Professor of History

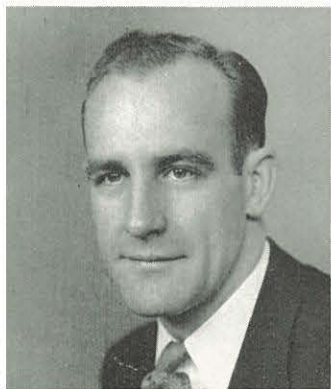
ROY KNIGHT  
A.B.

Physics Laboratory Instructor and First Aid



EDWARD T. LANCASTER  
A.B.

Dean of Men and Assistant to  
Business Manager



ELDORA CRAWFORD  
Dean of Women

Authoritative without being autocratic, and vitally interested in the welfare of each individual student, the Deans have performed a difficult task with ease and efficiency.

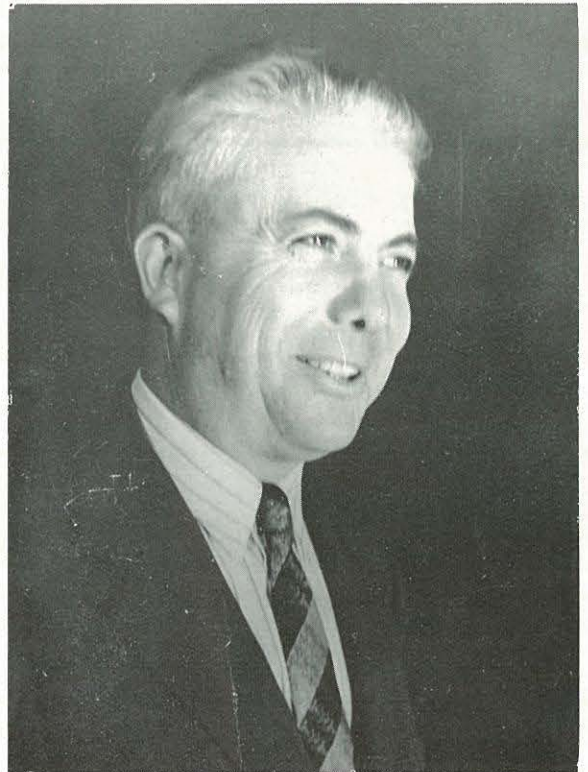




General office force under the leadership of Janice Markel and Beulah Sheppard.

The staccato click of typewriter keys, dulcet toned switchboard operators, efficient workers dispatching information, all these are spokes in the busily rotating wheel of the General Office, the hub of which is Mallalieu Wilson, registrar. Performing a difficult task with competence and ease, this corps of workers has earned for itself a noteworthy reputation.

## *Registrar*



MALLALIEU WILSON



# *B u r s a r*



GLENN SIEFARTH

Dealers in cold cash who keep a firm grip on N. N. C.'s pursestrings are members of the Business Office, under the direction of Glenn Siefarth, business manager. Deftly manipulating the registration time stampede for payment of fees and tuition are Beryl Hostetter, bookkeeper, and Ruby Grover, secretary to the business manager, who quickly relieve students of all excess funds.

A vital part of N. N. C. life, this all-important branch works diligently to keep the school's financial aspect functioning smoothly.



MARGARET ROCKWOOD

BERYL HOSTETTER

RUBY GROVER





# *Student Council*

With the well-being of the N. N. C. student body uppermost in its thoughts, the student council worked long and hard to untangle knotty problems and establish a well-oiled student government this year.

Revision of the Associated Students' constitution was one of its most important projects, with Wesley Young acting as chairman of the constitutional committee. Sponsorship of a radio broadcast and bi-monthly chapel service was effected by the group, while John Brasch's efficient handling of student body funds provided for a uniform system of bookkeeping for all school organizations.

LaMont Lee, student body president, made a competent and able leader of the Council, giving impetus to each activity.

LAMONT LEE  
Student Body President





# *Regents Board*

DR. D. I. VANDERPOOL  
Chairman



Molding and shaping the present and future of N. N. C., the Board of Regents is that friendly, intelligent body that assembles each year to determine many of the school's policies.

Students always enjoy talking with the various members and having the privilege of hearing them speak in chapel.

Meeting October 14 and February 24 this year, the Regents inaugurated the Victory Campaign to reduce college indebtedness by \$25,000, with Chairman D. I. Vanderpool leading the drive.





Ping-pong, shuffleboard, or basking in the sun is found attractive by students during leisure hours.

# Seniors

## MARJORIE MAE AXELSON, A.B.

Seattle, Washington

Major: Home Economics

Lambda Sigma Pi, Athletic Director 1-2-3-4; A. W. S. Vice-President 2-3; Class Secretary 4; Philharmonic 1, Vice-President 2, Advertising Manager 3; Oasis Calendar 4; Crusader Staff 3-4; F. T. A., Vice-President 3; Who's Who 4.



## ARTHUR E. BATES, Th.B.

Caldwell, Idaho

Major: Theology

Olympian, President 2, Program Chairman 3-4; International Relations Club, President 1; Debate 1; Philharmonic 1-2.



## LOIS BLAKELY, M.T., A.B.

Dickinson, North Dakota

Major: Chemistry and Biological Science

Lambda Sigma Pi; State Teachers' College, Dickinson; Christian Workers' Band; International Relations Club.

## JOHN BRASCH, A.B.

Boise, Idaho

Major: Theology

Nebraska Wesleyan College 1-2; Sigma Lambda Alpha; Christian Workers' Band; Treasurer Associated Students 4.



## MARGENE BROWN, R.N., B.Sc.

Fruitland, Idaho

Major: Biological Science

Bryan Memorial Hospital, Lincoln, Nebraska; Sigma Lambda Alpha, Athletic Director 1.

## VICTOR BUNDY, A.B.

Backus, Minnesota

Major: Mathematics

Lambda Sigma Pi, Treasurer 3, President 4; Glee Club 1; Philharmonic 1-2-3-4; A Cappella 2-3-4; F. T. A. 3; Honor Society 1-2-4; Crusader Staff, Editor 3, Assistant Managing Editor 4; Science Club 2; International Relations Club 3-4; Class Vice-President 4; King's Messengers 3-4; Who's Who.



## DONALD MORRIS CHALFANT, A.B.

Danville, Illinois

Major: Theology

Sigma Lambda Alpha; Varsity Basketball 3-4, Captain 4; Christian Workers' Band; Tennis Champion 3-4; Intramural Athletic Director; Olivet College 1; Bethany-Peniel College 2-3.

## ELIZABETH MARIE COLE, R.N., B.S.

Hysham, Montana

Major: Biological Science

Olympian; Foreign Missionary Band, President 4; Christian Workers' Band; Assistant Dean of Women 4.



# Seniors



**JOHN HENRY COTNER, A.B.**

Nampa, Idaho

Major: Philosophy and Theology

Alpha Delta Phi; Spencerian Speech Club; Christian Workers' Band; Men's Glee Club.



**RAYMOND E. COTNER, A.B.**

Nampa, Idaho

Major: Chemistry

Lambda Sigma Pi; Science Club 3; International Relations Club 3-4; Class Treasurer 4.

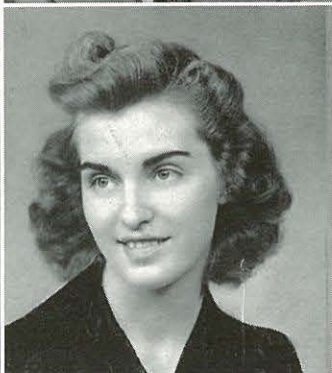


**LOWELL CLYDE ELLIS, A.B.**

Tillamook, Oregon

Major: Theology and Philosophy

Lambda Sigma Pi, Chaplain 1, Vice-President 4; Christian Workers' Band, Vice-President 2; School of Prophets; Spencerian Speech Club 1-2; Oasis Assistant Business Manager 2; Student Council 4; Honor Society 4; Crusader Editorial Assistant 4.



**ADALENE FELTS, A.B.**

Siloam Springs, Arkansas

Major: Home Economics

John Brown University 1-2; Bethany-Peniel College 3; Sigma Lambda Alpha.



**DOIL FELTS, A.B.**

Tishomingo, Oklahoma

Major: Theology

Sigma Lambda Alpha; Bethany-Peniel College 1-3-4; Who's Who; Northeastern State College, Oklahoma, 2.



**VIRGIL KENNETH GROVER, A.B.**

Boise, Idaho

Major: Theology and History

Alpha Delta Phi, President 4; Boise Junior College 2; Glee Club 1; Philharmonic 1; Debate 1; Christian Workers' Band; School of Prophets; International Relations Club; Class President 4.



**FRED A. HILLS, Jr., Th.B.**

Twin Falls, Idaho

Major: Theology

Alpha Delta Phi; Christian Workers' Band; School of Prophets; Spencerian Speech Club 1-2; Band 1-3; Orchestra 1; Philharmonic 1-2.



**WILMA KERN, A.B.**

La Moure, North Dakota

Major: Sociology and Theology

Lambda Sigma Pi, Athletic Director 1, Secretary 2, Program Chairman 3-4; A. W. S., Vice-President 2-4; Student-Get-Student Campaign Secretary 2; A Cappella 2-3-4, Secretary 2; Athletic Literary Council Secretary 2; Secretary Associated Students 3; Oasis Staff 3; Crusader 3-4; Who's Who 4; Victory Trio 4.



# 1943

## RICHARD J. KISSEE, A.B.

Nampa, Idaho

Major: Sociology

Olympian, Athletic Director 3, President 4; Bresee College 1; Glee Club 2-3; Band 3; Philharmonic 4; Debate 4.

## FRED KNIGHT, A.B., Th.B.

Haviland, Kansas

Major: Music and Theology

Lambda Sigma Pi, President 4; Friends Bible College 1-2; Friends University 3; A Cappella, Business Manager 4; Philharmonic, President 4.

## ROSCOE KNIGHT, A.B.

Haviland, Kansas

Major: Theology and Philosophy

Alpha Delta Phi; Friends Bible College, Haviland, Kansas, 1-2; Friends University, Wichita, 3.

## ROY KNIGHT, A.B., Th.B.

Haviland, Kansas

Alpha Delta Phi; Red Cross Instructor; Friends University, Wichita, Kansas.

## DOROTHY GREER LANCASTER, A.B.

Calgary, Alberta, Canada

Major: Sociology and Religious Education

Lambda Sigma Pi, Secretary 1, Treasurer 1-3; Glee Club 1, Treasurer 1, President 1; Philharmonic 1-2-3-4; Class Treasurer 1; Christian Workers' Band; International Relations Club 4; Oasis 3-4; A. W. S., Secretary-Treasurer 3, President 4; A Cappella 2-3-4, Secretary 3, President 4; Secretary Associated Students 4; Who's Who; Victory Trio.

## LAMONT CARLTON LEE, A.B.

Yakima, Washington

Major: Philosophy and Theology

Olympian, President 2-3, Program Chairman 3; North Dakota State School of Science; School of Prophets; Spencerian Speech Club 2-3-4; Christian Workers' Band; Class President 3; Varsity Basketball 3-4; Student-Get-Student Campaign President 4; High School Basketball Coach 3-4; President Associated Students 4; Who's Who 4.

## ALBERT LOEBER, A.B.

Connell, Washington

Major: Business Administration and Sociology

Olympian; International Relations Club 3-4; Christian Workers' Band 4; Varsity Basketball Manager 4.

## KAREN RUTH MANGUM, A.B.

Nampa, Idaho

Major: English and Literature

Olympian, Athletic Director 1-3, Program Chairman 3-4; Pasadena College 2; Philharmonic Choral Society 1-3; Spencerian Speech Club 1-3-4; Varsity Debate 3; Oasis, Business Staff 3, Associate Editor 4; Crusader Sports Editor 3; Class Treasurer 3; Women's Physical Education Instructor 4; Who's Who 4.

## LYDIA MARKUSEN, R.N., B.S.

Fergus Falls, Minnesota

Major: Biological Science

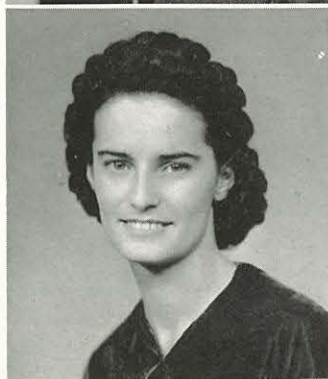
Olympian; Litchfield Hospital, Minnesota; University School of Nursing, Minneapolis, Instructor of Nurses; Honor Society 3-4.

## ELIZABETH HOPE MILLER, A.B.

Nampa, Idaho

Major: English and Literature

Sigma Lambda Alpha, Program Chairman 3-4; Varsity Debate 1; Oasis, Assistant Editor 3.

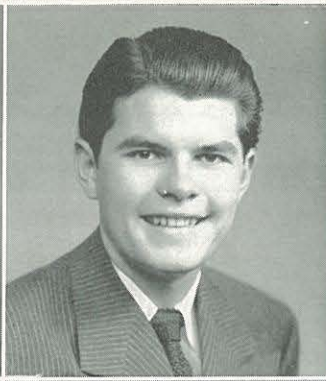






**THOMAS McKEE, Th.B.**

Stevenson, Washington  
Major: Philosophy and Theology  
Olympian, Chaplain 1-2; Class Chaplain 1; Debate 2;  
Christian Workers' Band 1-2-3-4.



**AL O'BANNON, A.B.**

Okeechobee, Florida  
Olympian; Trevecca Nazarene College 1-2; University of  
Tennessee 3; Delta Sigma Phi.



**WILLIAM GLEN REED, A.B.**

Nampa, Idaho  
Major: Business Administration  
Sigma Lambda Alpha, Athletic Director 3, Vice-President  
4; Oasis Bookkeeper 3.



**LaVERNE EDWIN RICKARD, A.B.**

Camas, Washington  
Major: Mathematics  
Lambda Sigma Pi; Glee Club 1-2; Philharmonic 1-2;  
Junior Varsity Basketball 2-4; Crusader Editor 4; Honor  
Society 1-2-3-4.



**WILBER A. ROGERS, A.B.**

Camas, Washington  
Major: Philosophy and Theology  
Sigma Lambda Alpha, President 4; Debate 3-4; Inter-  
national Relations Club, President 4; Christian Workers'  
Band, Pres. 4.



**ROBERT SWARTZ, A.B.**

Pierre, South Dakota  
Major: Philosophy and Theology  
Olympian; International Relations Club 2; Glee Club 1;  
A Cappella 3; Debate 1-2.



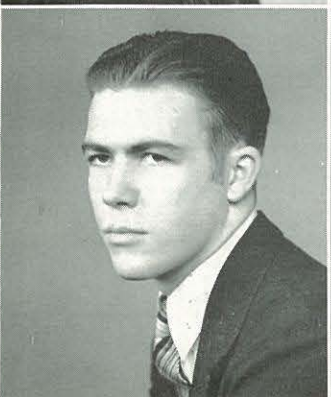
**ALBERTA VREDEVELT, A.B.**

Snohomish, Washington  
Major: Sociology and History  
Alpha Delta Phi; Seattle Pacific College 2; Glee Club 1;  
Philharmonic 1; F. T. A. 3.



**M. JEWELL WILSON, A.B.**

Nampa, Idaho  
Major: English  
Lambda Sigma Pi; Graduate, Pasadena College; University  
of Oklahoma; University of Southern California; Faculty  
Member of Central Nazarene College, Pasadena College,  
Bethany-Peniel College.



**MALLALIEU ARCHIE WILSON, JR., A.B.**

Nampa, Idaho  
Major: Philosophy and Theology  
Sigma Lambda Alpha; Class Treasurer 2; Varsity Debate  
3, Manager 4; Spencerian 2-3-4, President 3; International  
Relations Club 1-2-3-4, Vice-President 3; Orchestra 1;  
Band 1-2; Christian Workers' Band; School of Prophets;  
Honor Society 1-2-3.

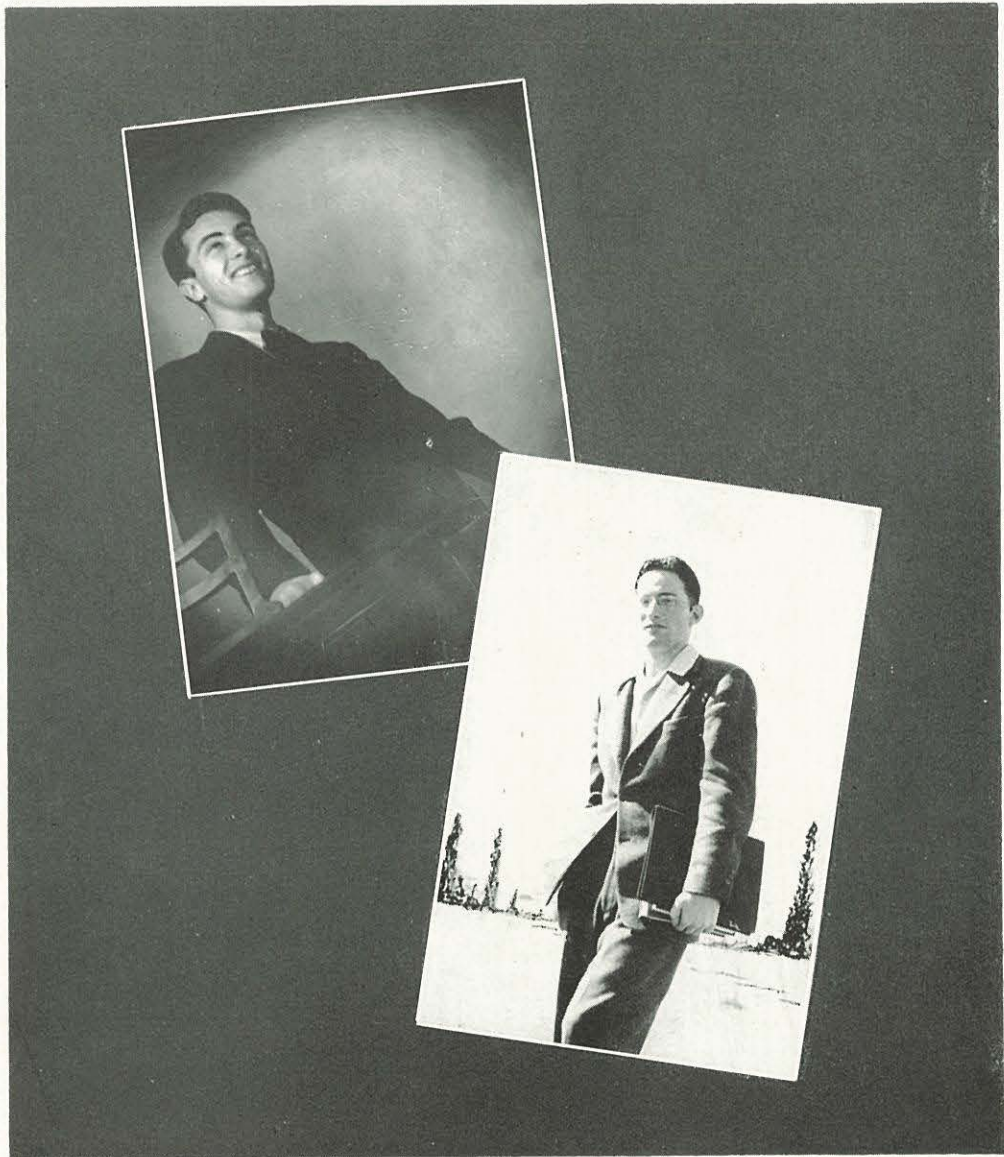


**JOSEPH YODER, A.B.**

St. Paul, Minnesota  
Major: Mathematics and Chemistry  
Sigma Lambda Alpha; Glee Club 1; Philharmonic 1-2-  
3-4; Christian Workers' Band; F. T. A., President 3; A  
Cappella 2-3-4; Honor Society; College Quartet 3-4.



# *Junior Who's Who*



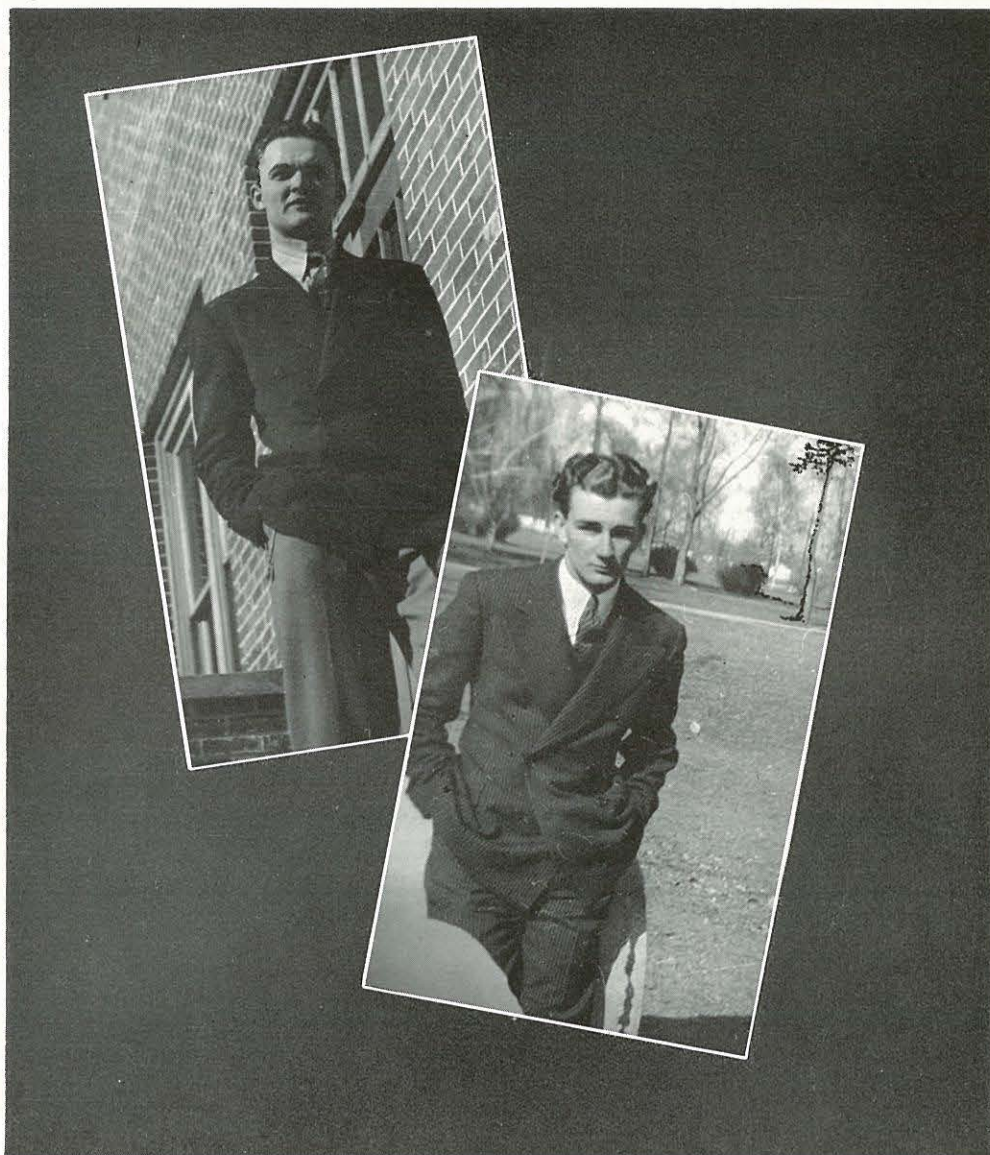
Juniors who have proved their worth to faculty and students are these two Who's Who members:

BOB WOODWORTH—Possessor of a magnetic personality, musical talent, and the faculty of getting along well with people.

ROY BUTCHART—Always on hand when a responsible leader is needed; friendly, likeable, and efficient.



# *Junior Who's Who*



Chosen on the basis of ability and participation in school activities these Junior members of Who's Who have demonstrated marked talent:

**WARREN FRANKLIN**—Strong character, a sturdy sense of responsibility, and a warm smile have made him popular on the campus.

**DON BARTLOW**—Equally at home in the realm of athletics, music, or scholastic pursuits.



## *Junior Class*

Wielding the heavy hand of authority over a group of obedient Freshmen, Junior Class members plunged into a busy and active year. Bested by the frosh in the Flag Hunt, the Juniors saved face by winning a decisive victory in the traditional Tug O' War. Hatchets were buried at the annual Freshman-Junior party which terminated the week's hazing.

Entrusted with the leadership of this peppy group were Roy Butchart, president; Don Bartlow, vice-president; Hazel Friberg, secretary; and Melvin Finkbeiner, treasurer.

Returning from their annual sneak, Seniors were accosted by blasts of fanfare from a Junior band, followed by a "feed" and welcome-home party at Morrison Hall dining room.

Caricaturing their superiors in a mock investiture service, Juniors closed a highly successful year.



LEO BAILEY  
Eagle, Idaho

HENRY BROWN  
Nampa, Idaho

DAVE CARTER  
Nampa, Idaho

ROY ECKER  
Nampa, Idaho

MELVIN FINKBEINER  
Nampa, Idaho

HUBERT HELLIN  
Madison, S. D.

DON BARTLOW  
Pomeroy, Wash.

JAY BUDD  
Hazelton, Idaho

MARVIN COOK  
Las Vegas, Nevada

STANFORD ERNEST  
Nampa, Idaho

LORENE FLYNN  
Colo. Springs, Colo.

VIRGINIA HELLIN  
Nampa, Idaho

LESTER BRADDOCK  
Harper, Oregon

EMERY BURKEY  
Whitewater, Kansas

RAY DRAKE  
Billings, Montana

ELEANOR ERNEST  
Burlington, Colorado

RAYMOND FRIBERG  
Plentywood, Montana

NORRIS HELSTROM  
Nampa, Idaho

LORA BRADDOCK  
Emmett, Idaho

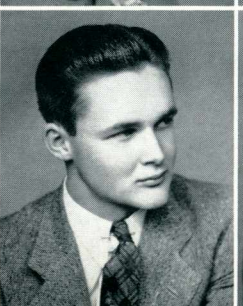
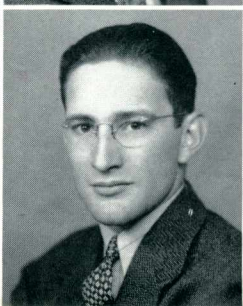
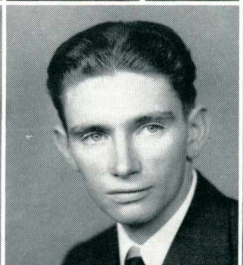
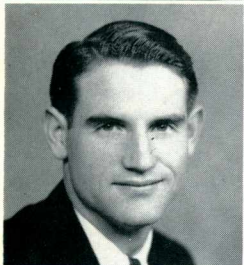
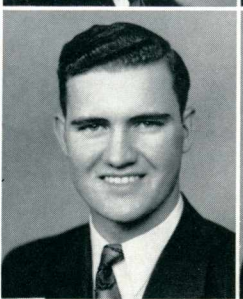
ROY BUTCHART  
Seattle, Wash.

MIRIAM EASTLY  
Seattle, Wash.

WARREN FRANKLIN  
Nampa, Idaho

LAUREL HARTMAN  
Wapanitia, Wash.

CHARLOTTE HUBBARD  
Alhambra, Cal.



MARVIN KISSEE  
Nampa, Idaho

JULIA LIEN  
Minneapolis, Minn.

MILDRED LARSON  
Wenatchee, Wash.

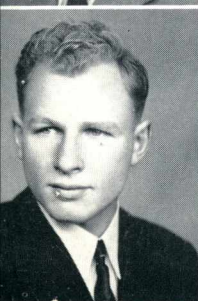
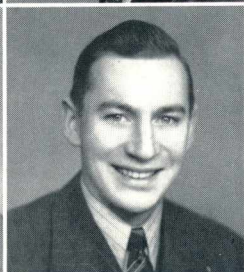
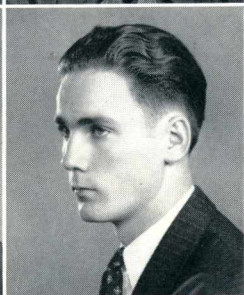
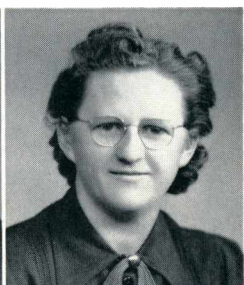
ARTHUR MOTTRAM  
Billings, Montana

THOMAS LEUPP  
Ritzville, Wash.

GEORGE NICHOLS  
Dayton, Wash.

BYRON LEE  
Yakima, Wash.

FLOYD POUNDS  
Boulder, Colorado



# *Juniors*



# *Juniors*

DONNA RANUM  
Valley City, N. D.

EARL ROGERS  
Medford, Oregon

ORVILLE SMYTHE  
Hazelton, Idaho

LELA WAGGONER  
Boise, Idaho

GRACE YODER  
St. Paul, Minn.

E. REICHENBERGER  
Ridgefield, Wash.

HAROLD ROGERS  
Camas, Wash.

REX STANTON  
Nampa, Idaho

KENNETH WEBB  
Nampa, Idaho

ESLI YOUNG  
Nampa, Idaho

LAUREN ROBERTS  
Meridian, Idaho

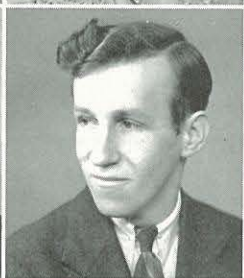
CHARLES ROWE  
Nashua, Montana

JAMES TINDALL  
Mollala, Montana

GILBERT WYATT  
Anacortes, Wash.

HOWARD ZINK  
Durango, Colo.

HAZEL FRIBERG  
Coeur d'Alene, Idaho





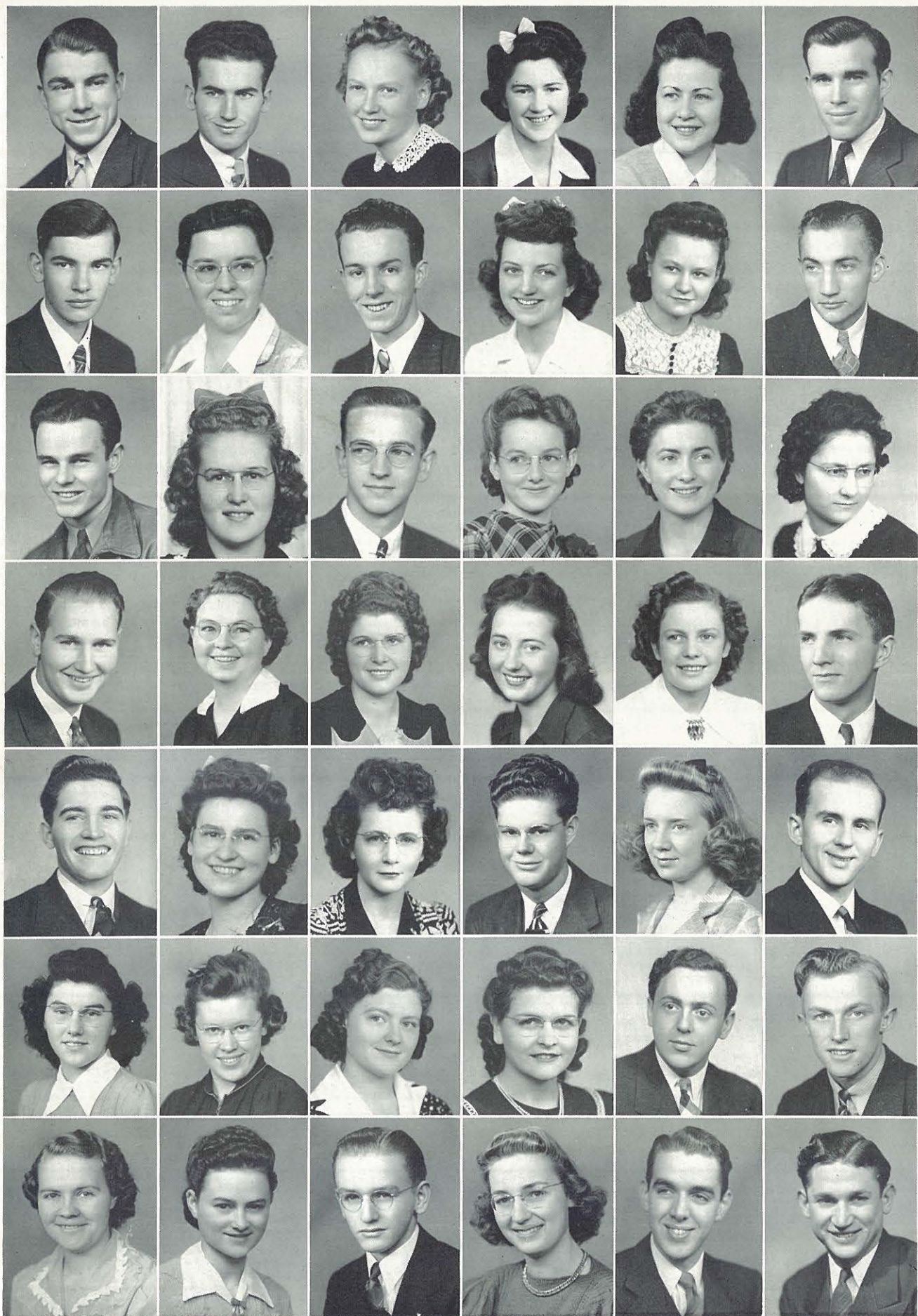
## *Sophomore Class*

Feeling like seasoned veterans, as a result of being in their second year at N. N. C., the Sophomore Class, under the competent direction of James Kayser, carved out a prominent niche for themselves in college life this year.

Forgetting that only one brief year lay between them and the Freshman Class, they wholeheartedly aided and abetted the Juniors in hazing the greenish-hued neophytes during Freshman Week.

Social activities centered around a kid party given by the Seniors in the fall, and a spring out-door party where the Sophomores played host to the upper classmen. Leaving their calling cards in social, spiritual, scholastic, and athletic realms, members of the Class of '45 have made a lasting place for themselves in the archives of N. N. C.





# *Sophomores*

VAUGHN ACHESON

OWEN AGENBROAD

EDITH ANTRIM

MERRIL BENNETT

LOIS BOWMAN

DEAN CAMPBELL

ROBERT DENNIS

BETTY EDES

DAVID ELLSWORTH

JACK HOWARD

CATHERINE HUNTER

GWENDOLYN JENNINGS

ERWIN KETTERLING

ELEANOR KORN

GWILET LARSON

RUTH MATTHEWS

RUTHE ELAINE MAXEY

ARDETH MILLER

JOSEPHINE PARK

EDNA PETERSON

HARVEY PETERSEN

DOROTHA ARNETT

JEANNE BEMISS

DON BELLAMY

DOLORES CASTLE

OLETHA CREEK

THEOPHIL DELZER

JAUNITA EVERETT

BETHEL FRITCH

CAROL HEMPEL

LORRAINE JENSEN

ILAMAE JOHNSON

JAMES KAYSER

HAROLD LITSEY

DOROTHY LOWMAN

TED MARKEL

EDNA MILLER

WOODROW MORGAN

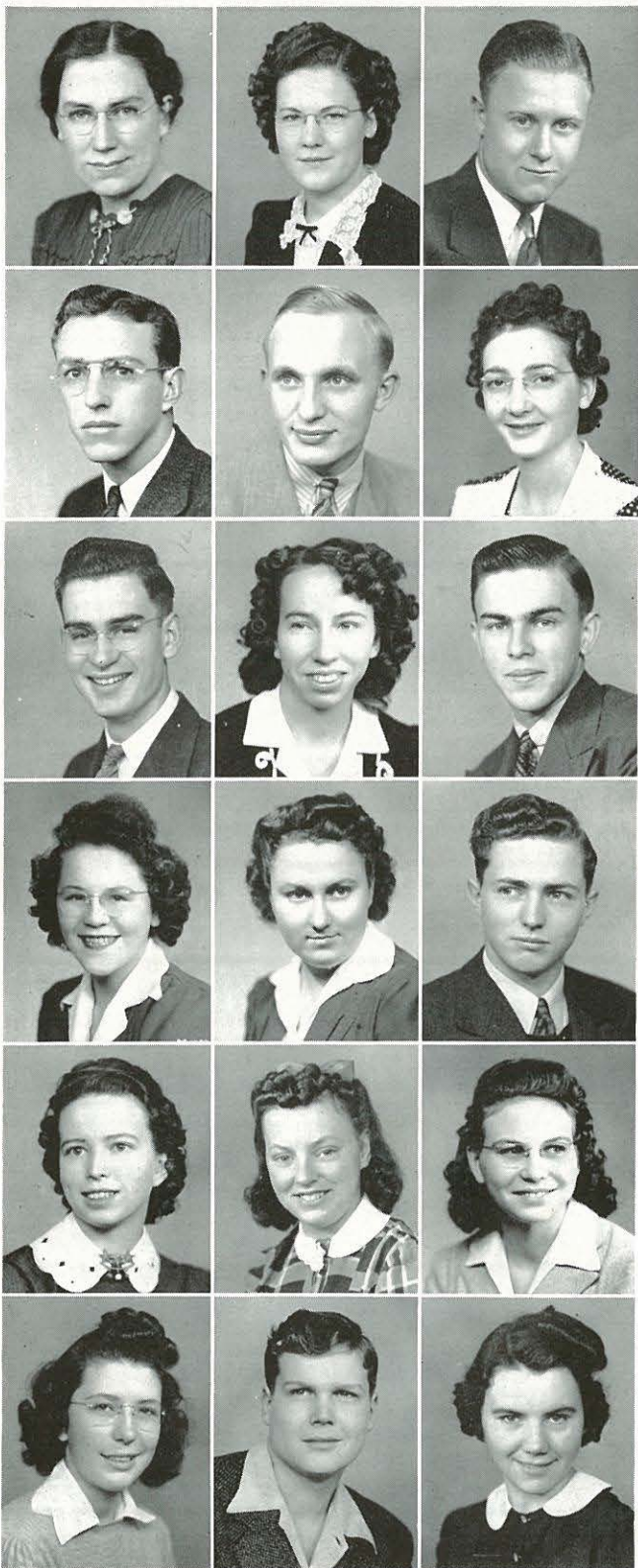
NORVIL NELSON

ALVERNA RICKETTS

LEWIS ROBERTS

MARVIN SHELBY





# *Sophomores*

BEULAH SHEPPARD

JEAN SHUTE

ERNEST SIEFARTH

ROBERT SMITH

ELWOOD SMITH

VERNADEAN SPURBECK

GEORGE STOOPS

LEDA SURFACE

DARRELL TEARE

BETTY TIEMEYER

LEONA TIMSON

ROBERT TOLBERT

OLIVE WEBB

ELIZABETH WEBBER

MARJORY WILLIAMSON

DONNA WILSON

WESLEY YOUNG

ELLA ZIMBELMAN



Freshmen of questionable I. Q.'s entered wholeheartedly into initiation week activities, as they began a year-long campaign to boost the honor of their class.

Flag night and the tug of war are the two most outstanding Freshman Week traditions.





# *Freshman Class*

Freshmen—the youthful crusaders of N. N. C.—characterized by ambition, pep, and capability, have successfully completed their first and probably most difficult year. Rapidly adjusting themselves to college customs, the newcomers made a place for themselves in the various phases of school life.

Chosen to lead their class were Elmore Vail, president; Ramon Vanderpool, vice-president; Elizabeth Kisse, secretary; and Dean Hungerford, treasurer. When Elmore received his call to the colors, Ramon competently stepped into the prexy's boots.

Freshman Week introduced the younger generation to the hardships of college life. They were compelled to lose their dignity by being classed as morons, idiots, imbeciles, and geni. Mistreatment of all kinds was forced upon them. The Freshmen pulled through it all, triumphing over the Sophomores and Juniors traditional flag night.

Maintaining the same unconquerable spirit manifest during initiation week, the youthful warriors have marched bravely through their first successful year at N. N. C.





# *F r e s h m e n*

MARGARET ALLEN

BETTIE ALLEY

DEE ANDERSON

GERTRUDE ARNETT

RUTH BARKER

ELLS BARTLOW

WHIT BARTLOW

ELEANORE BAUGHMAN

LOIS BROWN

IRIS BUNDY

PATSY CALDERWOOD

CHARLES CALLAHAN

ROBERT CRUM

DORIS CULVER

RUTH DAVIS

DELMA DeBOARD

MARJORIE ELMORE

FRANCES ESSER

ELIZABETH EVANS

LOIS EWY

ARDETH GROVER

ESTHER GUNTER

DAVID EARLE

ED HARDING

RUTH HELLAND

ROBERT HEMPEL

BERNICE HERRINGTON

MARY HILLHOUSE

IONA BAKER

JESSIE BALDWIN

JESSIE BARBER

DONALD BECKER

ELMER BITTLESTON

IDA MAE BOYD

HAROLD CARLSON

DONALD COZAD

RUTH CRAMER

LORRAINE DeBOARD

ARCHIE DeTIENNE

JULIA DUROCHER

LAWRENCE FAUL

EDMUND GALLOWAY

MILDRED GROVER

MARY HARMAN

ROSE HARTMAN

JOHN HARRIS

ORRIN HILLS

DONNA HOXIE

DEAN HUNGERFORD

ARLENE ILES

FAITH JOHNSON

BETTE JOHNSTON





# *Freshmen*

LOIS ANNE JOHNSON

JOSEPHINE JOLLIFF

THELMA KEEBAUGH

CLAIRE KERN

JOYCE KINCAID

BLANCHE KINGERY

ELIZABETH KISSEE

EILEEN KUNEFKE

OLIVE LAWRENCE

RICHARD LINDBLOOM

JANICE LOEBER

DAVID LONG

DOROTHY LONG

RUTH LONG

THELMA LYND

THELMA MANRING

ROLAND MARSH

LILLIE MATTHEWS

EUGENE McDOWELL

KATHLEEN McGINLEY

CARL MILLER

LORETTA MILLS

LESLIE MOORE

DALE MYRIC

DOROTHY NEES

EVERETT NELSON

WYLA NICHOLS

RETHA NYBERG

PEGGY OLDFIELD

BUFFY OLDRIDGE

ANITA OTIS

FLOYD PERKINS

MARY POPEJOY

EUNICE POWELL

CAROLYN PYRTLE

ALICE PUTMAN

CHARLES RICKARD

MARGARET ROCKWOOD

ALMA ROGERS

L.AVERNE SABIN

VIOLA SEARLE

ELDON SHIELDS

MARGUERITE SPENCER

VELMA STEWART

AUDREY SPURBECK

ELMA STRATTON

DAVID SULLIVAN

VERONA TAVES

VERMEDA TERHUNE

GRACE THAYER

MARION THIELING

VADAMAE TUCKER





# *F r e s h m e n*

LEOLA URQUHART

ELMORE VAIL

HARRIET WARFIELD

MARGARET WIEMAN

BILL WILLINGHAM

RUTH WRIGHT

MILDRED POELKE

RAMON VANDERPOOL

VELMA VAIL

MAXINE WARNER

DOROTHY WILDE

LOIS WION

HELEN YEEND

EVANGELINE PAUL

RAMONA VANDERPOOL

KENNETH VINYARD

WILMA WEBSTER

HESTER WILLIAMS

MARION WOODRUFF

LOIS TAIT

DOROTHY LONG





ALBERTA BIRKS

LORENE BUDD

TINA KNIGHT

LEO KIRLEY

C. L. LAIR

JAKE WIEBE

# *Specials*



LLOYD BIRKS

DON BOLTON

CLARENCE BOWMAN

WALLACE DePARTEE

EDGAR KINCAID

LAWRENCE LANCASTER

# *Graduates*





From eight o'clock in the morning until three-thirty in the afternoon the classrooms witness many a changing scene—small groups, large classes, medium-sized assemblages. Blackboards reveal chemical formulas, French verbs, history outlines and "trig" diagrams. Would-be chemists and scientists spend hours closed in with microscopes, acids, bases, and piercing odors. Twice a year the library succumbs to registration difficulties where the faculty patiently attempts to erase conflicts and each to prove the virtues of his own fields of interest.









Pleasantly shaded by the boughs of overhanging maple trees and softly blended into the velvet of the grass, the Samaritan Hospital gives the campus a restful touch of quietude.





Group of Student Nurses on  
Hospital Lawn.



Recipients of scratches, wound, and  
fractures are thankful for the like of  
these.

With these delicate instruments skilled  
hands of surgeons perform nothing less  
than miracles.



Training School and Staff

Standing a bit apart from the rest of the buildings but still close enough to remain a substantial factor in the life of N. N. C. is the Samaritan Hospital. Its contribution to the school has been of inestimable value, and now, more than ever before, it is recognized as an important part of N. N. C. life.

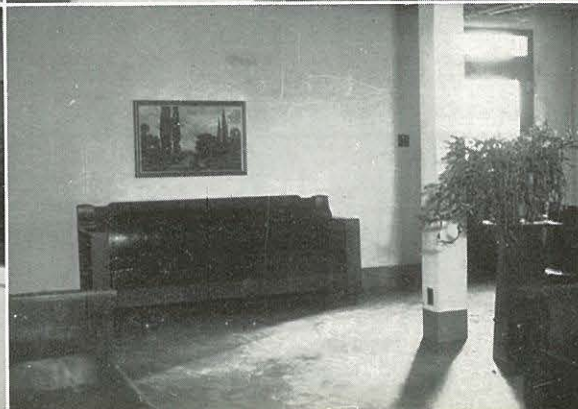
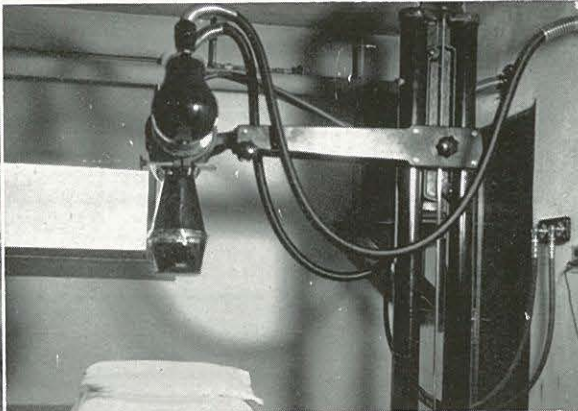
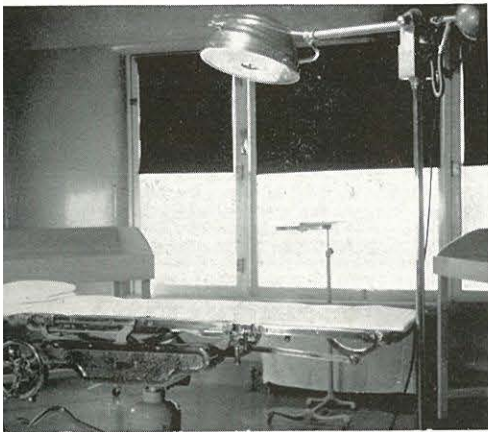
Here and there about the campus one may see the emblematic white uniforms of the nurses as they pass from classes to the hospital or cut across the park to the large three-story building which is the nurses' home.

N. N. C. takes pride in having such an outstanding group of young women taking part in the school's activities. Training now to crusade against death, disease, and pain, they will fill a vital need in American life.



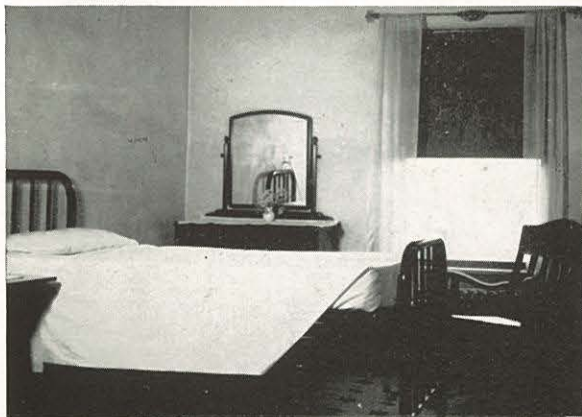
# *Nurses*

Modern equipment, recreational facilities, light and airy classrooms typify the care which is taken of the girls in training in our hospital. Much camaraderie is enjoyed by the nurses in their dining hall where the girls come for their meals when their duties in the wards permit



# *A t W o r k*

Patients, too, appreciate the cozily furnished sick rooms which make them feel at home. The cheerily curtained windows oftentimes filled with bright-colored plants let in the dancing, warm sunshine. Morning dawns for the patient with the sweet and comforting strains of an old familiar hymn sung by the nurses as they come on duty.





# *Theology*

—"And there shall be wars and rumors of wars—" Yes, Northwest Nazarene, too, has recognized her responsibility and is sending away her boys to fill the ranks of the nation's fighting forces.

At the same time, however, N. N. C. is acutely aware of the need of the world for Christian warriors to carry forward the banners of Christ. From the halls of N. N. C. are marching forward the soldiers of Christ—generals, sergeants, and buck privates in the service—proclaiming "Holiness unto the Lord." Dr. Lewis T. Corlett ably heads this department, assisted by Professors Sutherland, Miller, and Reed.



"What's cookin', Good Lookin'?" so ask the gallant knights as they pull their champing steeds to a halt at the western end of the campus near the Home Economics building. White enamel stoves can send forth some of the most delicious aromas that ever tantalized the nostrils of a roving crusader.

Upon two occasions this year the cooking class manned the kettles at the dining hall. Innocent victims and those engaged in the conflict enjoyed the adventure equally as well.

Seriously, however, the girls are doing a fine job of preparing themselves to carry on in responsible positions during this time of war. In each project they are learning and practicing the economy which is so important to America. Because they are doing a fine job of keeping up the home front they are cheered on by the hearty approval of the rest of N. N. C. May we all do our best to keep America on top.



RUTH FRITCH

# *Home Economics*

Within the walls of the Home Ec. department, co-eds learn to cook and sew and become efficient home managers.







TRAINING SCHOOL

# *Education*

Usually found hobnobbing with a pile of geography, history, and reading books, members of the normal department play an important part in N. N. C.'s student body.

Adhering firmly to the axiom that Christian principles plus thorough training equal better education, this group has had a chance to prove its thesis through practice teaching in the Grammar School.

Under the capable instruction of Professor Coral O. Young, the Normal department proved loyal this year to the tradition of turning out a group of well-trained Christian leaders for future generations of young Americans.



EDUCATION DEPARTMENT

# Department

## ELEMENTARY

OWEN AGENBROAD

LORA DELLE BRADDOCK

THEOPHIL DELZER

JUANITA EVERETT

LORENE FLYNN

CATHERINE HUNTER

RUTH MATTHEWS

MARION THIELING

LEONA TIMSON

LELA WAGGONER

## SECONDARY

MARJORIE AXELSON

FRED KNIGHT

ROY KNIGHT

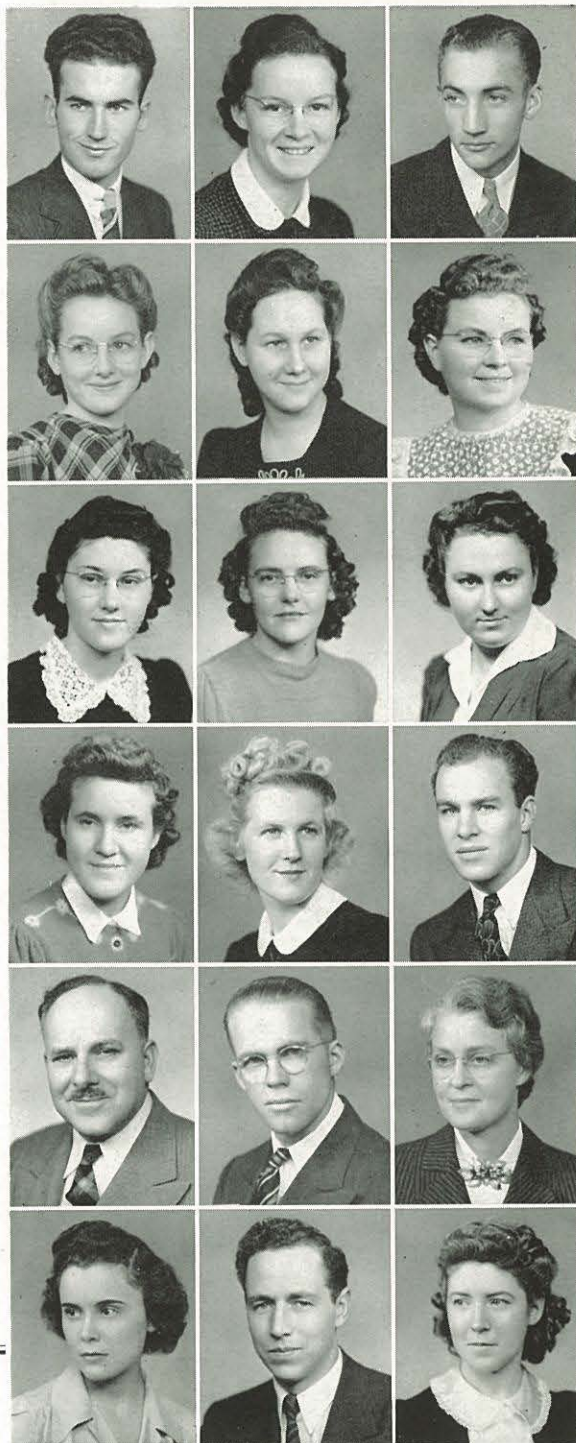
LAWRENCE LANCASTER

LYDIA MARKUSEN

BETTY MILLER

GLEN REED

ALBERTA VREDEVELT







ELLA LEONA GALE  
ROGER TAYLOR



A. J. FINKBEINER



GWENDOLYN BROWN  
Teacher of Piano  
BEATRICE WILSON  
Teacher of Violin

# *Fine Arts Department*



MONA PAULEE



MOISSAYE BOGUSLAWSKI



KRAEUTER TRIO

Featured in the opening community concert of the 1942-43 season was Mona Paulee, young metropolitan opera performer, who charmed listeners with her beautiful voice and gracious manner. Miss Paulee has been featured in several roles at the Metropolitan, one of which was in the recent presentation of "The Magic Flute."

Moissaye Boguslawski outstanding pianist, gave a brilliant performance that will long be remembered. Russian born, but now an American citizen, Boguslawski is familiar to audiences throughout the United States and Canada, where he has made appearances with major symphony orchestras and as a soloist. Especially noted for his interpretations of Chopin, a large part of his program was devoted to selections from that master.

Displaying complete mastery of the violin, cello, and piano, the Kraeuter trio composed of Carl and Phyllis Kraeuter and Rudolph Gruen presented an outstanding program of classical music. Included in the performance were both group numbers and solos, with each artist demonstrating flawless technique and striking ability. The Kraeuter trio has appeared in transcontinental tours, radio broadcasts, and concert series.

Instilling into his playing the same dynamic enthusiasm that permeates his personality, Percy Grainger, noted concert pianist, presented a brilliant performance in the College auditorium February 26 that will long be remembered by all who attended.

Delighting his audience with encores of his own composition, including "Country Gardens" and "Shepherd's Hey" the artist's program consisted of selections ranging from gay and lilting folk tunes to dramatic symphonic music.



PERCY GRAINGER



# *Band*

"Bugles Calling into Line"—the familiar strains of the school song, played by the College Band at our basketball games, chapel services, and pep rallies. The Band plays a prominent part in the athletic activities of the school, promoting Crusader spirit.

The year was climaxed by the traditional band concert held in Kurtz Park commencement week.



# *Orchestra*

Stressing the importance and technique of a church orchestra, as well as other orchestral points, this group has been a hard working one this year. Outstanding event of first semester was its string ensemble that played for "The Messiah." Second semester's work has been concentrated on practice for Commencement music.

# *A Cappella Choir*

Distinctive interpretations of varied types of music have made the A Cappella Choir outstanding in its performances this year. Garbed in their black robes and orange surplices, the group sang for College church three Sunday mornings each month as well as presenting concerts at several churches on the district. February 21 marked the opening of the concert season at Northside Nazarene Church, followed by a program in the College auditorium March 2. Under the direction of Professor Roger Taylor, several week-end trips were made during March and April throughout southern Idaho and eastern Oregon.





# *Philharmonic Choral Society*

With more than 160 students taking part, the Philharmonic Choral Society thrilled a large audience with its stirring presentation of George Frederick Handel's "The Messiah" in the College auditorium December 13. Solo parts were taken by Dorothy Nees, soprano, and Warren Franklin, bass, both N. N. C. students, while guest soloists Ruth Phillips and Keith Macey of Boise sang the contralto and tenor solos. An annual event at N. N. C., this year's presentation under the direction of Professor Roger Taylor was one of the most outstanding yet presented.

## *Women's Glee Club*

Injecting in its members a lasting appreciation for good music, Women's Glee Club has been an active group on the campus this year. Special emphasis was placed not only on accurate technique but on the value of good music as an ennobling influence in life. After its first public appearance in the Thanksgiving Chapel service the group spent its time preparing religious and secular music for the annual spring Fine Arts program. Professor Roger Taylor is director.

## *Men's Glee Club*

A small but noteworthy organization at N. N. C. this year has been the Men's Glee Club, under the direction of Professor Roger Taylor.

Short recitals on Campus Devotions and Chapel services have provided outlets for its musical talent. Enthusiastic, capable, and interested in good music, this group has made a worth-while contribution to college life during the past two semesters.







# *A r t*

Just another touch of blue and a few purple undertones, and this should resemble something...." Deft strokes by artistic neophytes result in many an outstanding piece of work.

Appointment of Professor A. J. Finkbeiner this year as instructor in Art filled a long-felt need for the development of N. N. C.'s artistic talents.

First semester began with many students enrolled in Creative Chalk, Sculpturing, Cartooning, Commercial Art, Painting, and Art Methods.

Students enjoyed their work and saw such great improvement that they re-enrolled for second semester and brought their friends along too. The department began to grow in leaps without bounds, for second semester there were over one hundred enrolled in all classes, including private and special. During second semester Sculpturing and Cartooning classes were dropped to make room for advanced classes in Creative Chalk and Commercial Art, while a class in Sketching was added.

Students in all departments began to take an interest in the smelly, little art laboratory as their primitive nature cropped out to show their love for wrapping up in a gaudy smock, grabbing a satisfactory messy material, setting up an easel, and getting smeared.

In spite of the inartistic effect upon the students there was a surprising amount of talent discovered in a very short time. Work displayed by students not only brought praise from N. N. C.'s own campus but from other campuses as well.

At the close of first semester and again near commencement, art exhibits were given, arousing additional interest by the remarkable display of work. Exhibits introduced the students to work done by every class and made them aware of outstanding talent in their midst.

Outside of class students began to take part in church services, civic meetings, and outpost work, filling a place of service by taking God's pictured truths to the people.

Some students made entries in the national stewardship poster contest. With such a fine start there is no doubt but that the art department may look forward to still more success and service in the future.

"—and I thought all one did with a pencil was write." Here pencils are merely a means to an end, as students take up sketching.



Time flies as students, garbed in smocks, patiently work for the desired effect in oil and chalk paintings.





# *Northwest Nazarene Academy*

Enrolling students from twelve states and Canada, the Academy comprised a metropolitan group this year, with a record enrollment. Principal Lloyd Adler's departure for the armed forces left Professor Thelma Culver in charge for the remainder of the year. Mrs. Doryce Fraser, former Academy instructor, returned second semester to assume the position of Language and Music director.

Basketball, crew haircuts, peppy cheer leaders, exam exemptions, brief vacations, and over all the sobering thought of war epitomized N. N. A.'s first semester.

Second term brought a new rush of activity with the Junior-Senior banquet, semester themes, chapel programs, and the music festival, all vying for attention.

Proving that spirituality, fun, and pep can combine to make a highly successful high school, N. N. A. has added another chapter to her record of preparing well-rounded young people for college and vocations.



THELMA B. CULVER  
Principal

DORYCE FRASER

GUY E. SHARP



F. C. SUTHERLAND

A. J. FINKBEINER

ROY S. KNIGHT



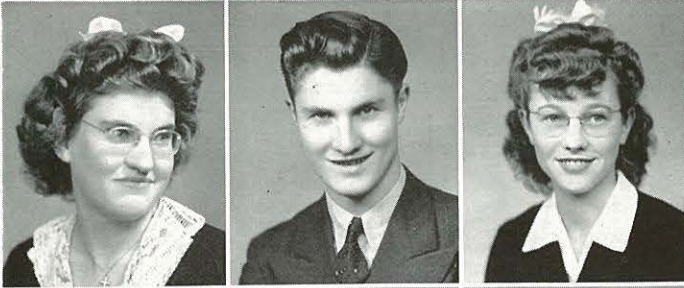
# *Academy Officers*

Students find a varied program at N. N. A. which encompasses everything from inspiring chapel programs to rousing parties, with each person taking part in some extracurricular activity during the year.

Last year's awards for outstanding academy students were claimed by Dean Hungerford, valedictorian, and Ramona Vanderpool, salutatorian; Virginia Kirley, Junior, and Elmore Vail, Senior, won the bronze all-round student plaque. Stressing spirituality, scholastic achievement, and character building, the Academy prides itself on turning out well-rounded students.



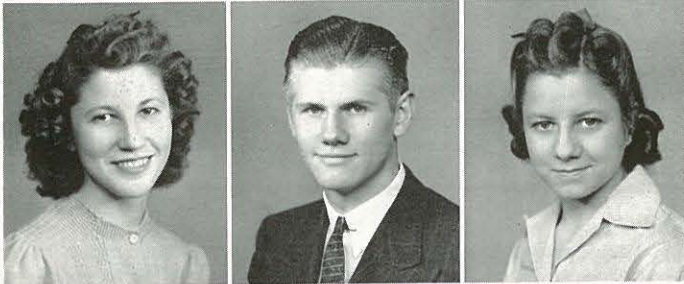
# Academy



IVAH ALEXANDER

DONALD AXELSON

RUTH CHITTENDEN



LEONE DUNCAN

EMERSON ELMORE

ESTHER HAMMER



FAYE HARPER

GLEE HUSS

RAMONA ISGRIGG



CLAIRE KERN

GRACE KINCAID

VIRGINIA KIRLEY



JEAN LABUSOHR

ESTHER LAUGHLIN

BOB LEE

# Seniors

DAVE MESSENGER

NADINE NEIL

MARJORIE PFOST



JOAN SHARP

LAURA MAE SMITH

RUSSELL SPEER



BOB SUTHERLAND

ELBERTA TRAVIS

HELEN UTESCH



JOE WILDER

CALVIN WILLIAMSON

ILENE WINE



VICTOR ZARLEY







*Juniors*



*Sophomores*



*Freshmen*



# *Music Activities*



MIXED CHORUS

GIRLS' GLEE CLUB

Among the various activities of the Academy, Music holds top rank. Under the leadership of Mrs. Frasier music organizations and individual musicians entered the National Music Contest. Placing in first division were the Senior Girls' Sextet and Berneice Holland, marimba. Those winning second place were the Girls' Trio; the Girls' Glee Club; Joan Sharp, Soprano; Paul McNutt and Jean Labusohr, tenors.



# Academy Basketball



Top Row: First and second teams with their coaches, Bob Dennis and LaMont Lee.

Second Row: Virgil Vail, second high man of the season; the Academy yell team composed of Nadine Neal, Dale Ova, and Sue Pruett; and Bob Lee, captain and high point man of the season.

The Trojans closed one of their most successful seasons with a one-point win over Eagle. Paced by the captain and center, Bob Lee, who averaged 10 points per game, the Trojans lost only four of their nineteen games.

LaMont Lee and Bob Dennis, college students, coached the Trojans throughout the season and won the loyalty and co-operation of every fellow on the team. Carrying out the tradition of good sportsmanship, our varsity players won a double victory for N. N. A. by their many victories.

N.N.A. .... 31	Greenleaf ..... 23	N.N.A. .... 47	Melba ..... 21
N.N.A. .... 26	N.N.C. J.V. .... 50	N.N.A. .... 35	Star ..... 25
N.N.A. .... 30	Eagle ..... 29	N.N.A. .... 54	Middleton ..... 29
N.N.A. .... 26	Notus ..... 21	N.N.A. .... 22	Meridian ..... 31
N.N.A. .... 29	Naval Cadets ..... 24	N.N.A. .... 41	Greenleaf ..... 17
N.N.A. .... 13	Meridian ..... 19	N.N.A. .... 26	Marsing ..... 20
N.N.A. .... 26	Nampa Sophs ..... 11	N.N.A. .... 21	Eagle ..... 20
N.N.A. .... 26	Melba ..... 29	N.N.A. .... 39	Middleton ..... 13
N.N.A. .... 42	Marsing ..... 28	N.N.A. .... 25	Naval Cadets ..... 24
N.N.A. .... 35	Notus ..... 20		

# *Lambda Sigma Pi*

As the youngest society on the campus, L. S. P.'s might well be termed the "children's crusade," although they have proved to be one of the smoothest functioning organizations on the campus.

Forging ahead of the other societies, L. S. P.'s emerged victorious in the closed night programs when their party, replete with cider, doughnuts, and lollipops, drew the largest number of members.

Abounding in individual musical talent, L. S. P.'s included Don Becker, baritone; Ramon Vanderpool, trombonist and quartet member; and Fred Knight, band leader, singer, and all-around musician, in their roster of outstanding students.

First place honors for their play, "I'm In the Army Now," were copped by the Lambda Sigs as reward for a well-cast, humorous, and deftly patriotic presentation.

Cup winners three times in the past, L. S. P.'s are keeping an eye on future honors, which, in view of this year's records, do not seem too far distant.





$A \Delta \Phi$

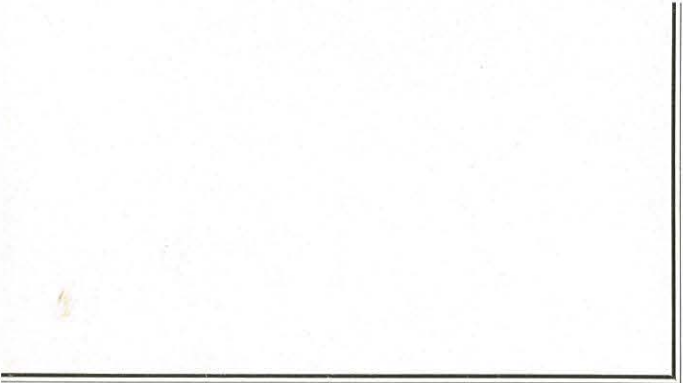


# *Alpha Delta Phi*

A strong rear-guard in the Athletic-Literary Society crusade has been the A. D. P. Society, providing interesting competition for the other goal seekers. No activity was overlooked by the Alpha Deltas; their debate team composed of Henry Brown and Melvin Finkbeiner won second place in intersociety debates; Dorothy Nees, soprano soloist, and David Sullivan, pianist, gained acclaim as two of the most talented musicians on the campus. Keeping alive the old A. D. P. tradition of cornering top spots in major activities, they were well represented in the publications field with Oasis editor Lewis Roberts, Crusader editor Wesley Young, and a large number of the staff members coming from this group.

Displaying striking originality and accomplished acting, "Road Into the Sun," their first semester contest program, gave N. N. C. an evening of outstanding entertainment.

Non meetings where vibrant shouts of "Alpha Delta Phi! fight!" sent echoes across the entire campus, enthusiastic cheering sections at intramural games, and above all a sense of unswerving loyalty to the purple and gold made the A. D. P.'s a real challenge to their opponents this year.







Σ Λ Α



---

---

# *Sigma Lambda Alpha*

No victorious knight was ever prouder of having completed a successful crusade than were the S. L. A.'s when the prized faculty cup fell into their hard-working hands at the close of the first semester.

Athletic competition instinctively grew keener whenever the Sigma Lambda's entered; their girls' basketball and volleyball teams, boys' basketball, softball, and football squads, all came through fray after fray holding high the banner of the society.

"Once Every Year," a Christmas play, won second place in literary competition, giving the S. L. A.'s the point lead needed to gain possession of the cup. Archie Wilson and his silvery-toned trumpet, a harmonious girls' sextette, and numerous other individual performers added to the success of the organization. Peppy, proud of their lead and anxious to hold it, Sigma Lambda Alphas can look back on a highly successful year.

---

---





*OLY*




# *Olympians*

Accomplished athletes, peppy promoters of every campus activity, and name-carvers on the annals of college life are the 1942-43 Olympians.

Contributing members to every major activity, Oly's claimed five of the first eight varsity basketball players, girls' sports leaders such as Phyllis Roberts, Ruth Mangum, and Lois Williamson; assistant editors of both the Oasis and Cruader; president of the Christian Workers' Band and student body president. Winning first place in the inter-society debate tournament were Oly arguers Marguerite Spencer and Virginia Kirley who went through the tourney undefeated.

"After Wimpole Street," first semester contest play of the Oly's, brought forth outstanding portrayals of Robert and Elizabeth Browning, by Harold Carlson and Carol Hempel, while "Telephone Number One," a one-act drama, strikingly depicted American progress, the theme of the second semester program. Holding fast to the axiom, "Where there are Olympians, there is co-operation," the Oly's completed a busy and memorable year.





# Oasis



LEWIS ROBERTS  
Editor

Emerging from a welter of paste pots, rulers, and dummy sheets, our long submerged editor and his staff may now sit back and leisurely observe their ink-smeared personages, as the 1943 Oasis rolls off the press.

Picture mounting, frequent conferences with staff heads and brief pauses to drink cokes before continuing the grind, filled many an evening, while urgent demands of a deadline to be met gave impetus to each effort.

Generous sprinklings of foot balm and a large bouquet go to the business manager whose willing feet dented many a sidewalk in an effort to track down advertising copy, and to the other staff members who gave a full share of co-operation.

War time shortages and limitations have necessitated a different handling of school activities in this year's book but it is hoped that students will approve the results,



RUTH MANGUM  
Assistant Editor



TOM LEUPP  
Business Manager



# Staff



DAVID SULLIVAN  
Art Editor



RAMON VANDERPOOL  
Photography Editor



MARGUERITE SPENCER  
Literary Editor

MARJORY WILLIAMSON  
Bookkeeper

JOAN SHARP  
Copy Editor

DEE ANDERSON  
Advertising Layout Mgr.  
Assisted by Ed Galloway



The Editor designs a  
"spread."



VIRGINIA KIRLEY  
Academy Editor



CHARLOTTE HUME  
Typist



PEGGY OLDFIELD  
MIRIAM EASTLY  
DOROTHY LANCASTER  
Writers

JANICE MARKEL  
Secretary to the Editor

DON BECKER  
Men's Sports

MARJORIE AXELSON  
Activity Recorder

PROFESSOR WASHBURN  
PROFESSOR JANOSKY  
Faculty Advisers



# N. N. C. CRUSADER

Seek ye first the kingdom



## RICKARD LAUNCHES FIRST SEMESTER PUBLICATION

During the first semester LaVerne Rickard, a senior and honor student, served as Editor of *The Crusader*, our bi-weekly student newspaper. Under his guidance the paper continued to depict clearly life here at N. N. C. The editorials were timely; the feature stories were well written, new features were added; and the paper was made to fill a distinct place in our world here at Northwest Nazarene College.



## YOUNG TAKES OVER MID-YEAR

Wesley Young a sophomore in college, and likewise an honor student, took over the Editorship of *The Crusader* at the beginning of the second semester. Wes has given us an efficient and constructive administration; he has not failed to call our attention to needed reforms, and has ever labored to give us an interesting, readable paper that not only makes campus life more enjoyable, but one that contributes also to that which is worthwhile.



## SPENCER PROVES TO BE IRREPLACEABLE ASSET BOTH SEMESTERS

To Marguerite Spencer, better known as "Bob," goes much of the credit for the very fine newspaper that we have had upon the campus this year. She served as Associate Editor during both semesters, and is always ready to help iron out that troublesome detail, or to write that last minute article which is so necessary to the success of the issue. Bob writes those sparkling "Senior Personalities" that leave the so-called "personalities" rather dazedly wondering about whom she was writing.

It is such people as Bob, Wes, and Rick that are responsible for the success of our school paper. They have had an important task, but they have done it well. To these three, and to the whole Crusader staff, we say "Well done."

## EFFICIENT STAFFS COMPLETE FIRST ENTIRE YEAR OF PUBLICATION

### FIRST SEMESTER

Editor-in-Chief ..... LaVerne Rickard  
Associate Editor ..... Marguerite Spencer  
Managing Editor ..... Joseph Yoder  
Assistant Managing Editor ... Victor Bundy  
Sports Editor ..... Thomas Leupp  
Organization Editor ..... Marjorie Axelson  
Academy Editor ..... Ilene Wine  
Feature Writers—Ardath Miller, Ruth Wright, Bethel Fritch, Charles Rickard  
Columnists—Edgar Kincaid, Wesley Young  
Reporters—Edna Miller, Grace Yoder, Wilma Webster, Dolores Castle, Helen Yeend, Donna Hoxie, Kay Callahan  
Sports—Ed Harding, Bob Smith, Elmore Vail, Ellis Bartlow, Carl Miller, Whit Bartlow

Typist ..... Thelma Keebaugh  
Business Manager ..... Jack Howard  
Assistant Business Mgr. ... Eugene McDowell

### SECOND SEMESTER

Editor-in-Chief ..... Wesley Young  
Associate Editor ..... Marguerite Spencer  
Managing Editor ..... Edna Miller  
Assistant Managing Editor ..... Carl Miller  
Editorial Assistants—Lowell Ellis, DeWitt McAbee, Wilber Rogers  
Sports Editor ..... Clarence Bowman  
Organization Editor ..... Grace Yoder  
Academy Editor ..... Virginia Kirley  
Columnists—Marguerite Spencer, Edgar Kincaid, LaVerne Rickard, DeWitt McAbee

Reporters—Dolores Castle, David Messenger, David Sullivan, Robert Tolbert, Donna Ranum.  
Sports—Ed Harding, Bob Smith  
Typist ..... Betty Johnston  
Faculty Sponsor ..... Professor Dooley  
Business Manager ..... Harvey Peterson  
Circulation Manager ..... Bob Hempel



# *Staffs*

Editor LaVerne Rickard  
and executive staff

First semester reporter  
staff and column writers



Editor Young and his  
executive staff

Grace Yoder  
Managing editor  
Dolores Castle  
College coverage

Second semester  
editorial assistants



# A.



Marita Lee, Social Chairman; Carol Hempel, Secretary-Treasurer; Wilma Kern, Librarian; Dorothy Lancaster, President; Beulah Shepphard, Chaplain; Charlotte Hume, Vice-President.

Ladies at court met visiting gentry with a friendly smile and showed them a royal welcome this year as the Associated Women Students prepared to make N. N. C. a bulwark of hospitality for timid, shy freshmen.

Graciously rising to each occasion, the A. W. S. endeavored to take a place of service throughout the year in the social life of N. N. C.

Striving to create a friendly and cheerful atmosphere about the campus, Associated Women aided new arrivals by meeting them at the train and taking them to the dormitory. All remaining traces of homesickness about this going to college business were dispelled when telegraphed greetings and lovely corsages were sent them their first Sunday morning.

Under the leadership of queenly Dorothy Lancaster, new girls were adopted by "big sisters," who helped them get acquainted with our college. A tea honoring the young proteges was given in October, followed by a Christmas tea where "big sisters" were guests. February brought Heart Sister Week, with good fairy "heart sisters" mysteriously doing favors for one another. The week was climaxed by a formal dinner on the evening of Friday, February 12.



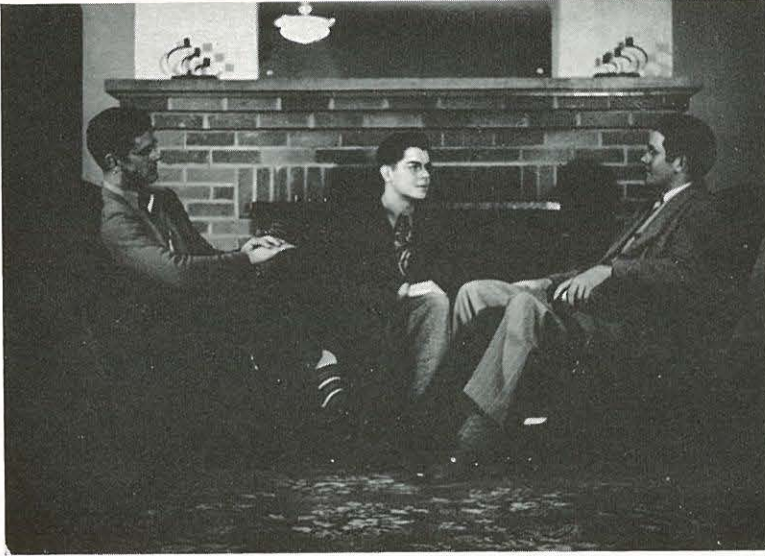
# W. S.

A. W. S. President Dorothy Lancaster presides at the registration table during Heart Sister Week.



With their hair in pincurls and their hearts atune, A. W.S. members gathered about the Morrison Hall fireplace at various times during the year to enjoy a leisurely time together. Seated on the floor, with the glow from the fireplace flickering upon their faces, the girls joined in singing choruses, giving skits, listening to talks or just sitting about munching on popcorn balls. From these gatherings have come inspiration and a deeper appreciation for spiritual values that will leave a lasting imprint upon the life of each girl.





Frank Cook, President; David Sullivan, Secretary - Treasurer; and Tom Leupp, Vice-President.

With a clash of steel and a mighty clanging of arms the crusading knights royally presented themselves to the regal courts of N. N. C. this year for another season of service wherever their peers might deem them useful. "Go ye Crusaders!" they chanted while polishing their helmets and testing their blades.

# *The Men's Club*

Then quietly they donned bow ties and went to work with manners polished and gleaming, the men's club formally introduced the Freshman Class to school with a formal Freshman reception.

The next task at hand was that of giving our pastor a good pounding. Contrary to the villainous name applied to the affair, our gallant Knights chivalrously filled the Harding larder to overflowing with baskets of food.

It became almost impossible for the men's Club to keep out of anything; they joined with the ladies at court to give the heart-sister banquet.

Chivalry being their watchword the men in the bow ties were also seen at every occasion ushering the visiting gentry to their seats.

The Men's Club has found a permanent place in campus activities, having completed its most successful year.







# *Spencerian Speech Club*

Not by physical feats of valor, but nonetheless effectively, by word of mouth the members of the Spencerian Speech Club gallantly carried forward the crusader banner this year. Officers elected for the year included DeWitt McAbee, president; Wesley Young, debate manager; Marguerite Spencer, declamation manager; Dolores Castle, secretary; and Frank Cook, treasurer. With these efficient leaders, the sponsorship of Professor M. A. Wilson, head of N. N. C.'s speech department, and the wholehearted support and cooperation of President Corlett, the club closed the year with many victories to its credit.

In November, N. N. C. was host to the Southwestern Idaho Debate Tournament. Because of the war emergency the College of Idaho was the only other school able to send participants. Nonetheless, the tournament was marked by a remarkable display of debating talent, with one of our teams composed of Wes Young and Bob Spencer taking first place honors.

February 17-20, four contestants attended the annual Linfield Invitational Debate Tournament at McMinnville, Oregon. Highlight of the tournament was the acceptance of a bill sponsored by Miss Donna Wilson in the Congress of Human Relations. This bill, providing for an enlisted reserve corps of nurses, was passed unanimously and memorialized by the Oregon State Legislature from which it is to be sent to the United States Congress.

Throughout the year, the Spencerians have also sponsored the intersociety debate tournaments and declamatory contests.

Realizing the added expenses of travel due to war emergency, the Associated Student Body this year granted an increase in apportionments for the organization. With an open field ahead, the Spencerians are making big plans for adding much-needed equipment to their supplies and are launching out into a bigger, fuller program for the years to come.

WESLEY YOUNG

MARGUERITE SPENCER

DONNA WILSON

WILBER ROGERS







# *International Relations*

Preparing themselves to become future statesmen, members of the International Relations Club have argued over many a weighty problem in this year's bi-monthly meetings. Featuring discussions, news resumes and lectures, the sessions have proved to be both entertaining and educational.

Several new books have been added to the college library by this organization, and special chapel services have been presented by both students and outside speakers. Large maps of the major war theaters were kept on a hall bulletin board for the convenience of students throughout the year.

---



# *Christian Workers' Band*

Providing an outlet for the talents of young ministers, and satisfying a vital need in Nampa's outlying communities, the Christian Workers' Band has proved to be a real instrument of blessing.

Each Sunday, groups including readers, singers, and ministers visit small churches and outpoints within a radius of twenty miles. This not only affords an opportunity for students, but is a great help to these churches, most of which are too small to employ a full-time pastor.

Virgil Grover and his corps of workers go each Sunday to Red Top, where both church and Sunday School attendance have been built up. Morris Chalfant and Stanford Ernest are co-pastors of the church at Ten Mile Heights, where several denominations are combined. Tom Leupp has had charge of the Melba Methodist Church, and Mr. and Mrs. Raymond Friberg have been working at Liberty. Starting a good work at Valley View were Frank Cook and Wilber Rogers, while Mr. and Mrs. Archie Wilson have led the workers at Mountain Home. Visits to the Nampa Old People's Home were made each week by students under the leadership of Fred Hills.

With the aim of serving humanity, the burden of souls on their hearts, and Christ as their leader, the Christian Workers have faithfully done their part to advance the Kingdom.





REVEREND U. E. HARDING, Pastor

The Church of Youth led by our pastor, Rev. U. E. Harding, assisted by Dean Ted Lancaster, has continued to grow and progress in shaping character and spirituality of students of our college.

Sunday School and Young People's services provide additional help and guidance for church members. Weekly prayer meetings are inspiring, blessed times of fellowship together in Christ.

The College Church plays a vital part in the life of each student, faculty member, and friend of Northwest Nazarene College.

# *College Church*



# Athletic Literary Council

## ALPHA DELTA PHI

### FIRST SEMESTER

Virgil Grover ..... *President*  
 Ardeth Grover ..... *Secretary*  
 Stanford Ernest ..... *Treasurer*  
 Warren Franklin ..... *Program Chairman*  
 Dorothy Nees ..... *Girls' Athletic Director*  
 Dean Campbell ..... *Men's Athletic Director*  
 Kenneth Webb ..... *Vice-President*

### SECOND SEMESTER

Roy Butchart .....  
 Ardeth Grover .....  
 Stanford Ernest .....  
 Dave Sullivan .....  
 Miriam Eastly .....  
 John Kissee .....  
 Art Mottram .....

## LAMBDA SIGMA PI

### FIRST SEMESTER

Victor Bundy ..... *President*  
 Wilma Lee Thompson ..... *Secretary*  
 Woodrow Morgan ..... *Treasurer*  
 Woodrow Smith ..... *Vice-President*  
 Bethel Fritch ..... *Program Chairman*  
 Marjorie Axelson ..... *Girls' Athletic Director*  
 Elmore Vail ..... *Men's Athletic Director*

### SECOND SEMESTER

Fred Knight .....  
 Wilma Webster .....  
 Ramon Vanderpool .....  
 Lowell Ellis .....  
 Wilma Kern .....  
 Elizabeth Kissee .....  
 Howard Zink .....

## SIGMA LAMBDA ALPHA

### FIRST SEMESTER

Thomas Leupp ..... *President*  
 Dorothy Lowman ..... *Secretary*  
 Rex Stanton ..... *Treasurer*  
 Frank Cook ..... *Vice-President*  
 Joe Yoder ..... *Program Chairman*  
 Velma Vail ..... *Girls' Athletic Director*  
 Ed Harding ..... *Men's Athletic Director*

### SECOND SEMESTER

Wilber Rogers .....  
 Edith Antrim .....  
 Rex Stanton .....  
 Glen Reed .....  
 Dorothy Lowman .....  
 Velma Vail .....  
 Ed Harding .....

## OLYMPIAN

### FIRST SEMESTER

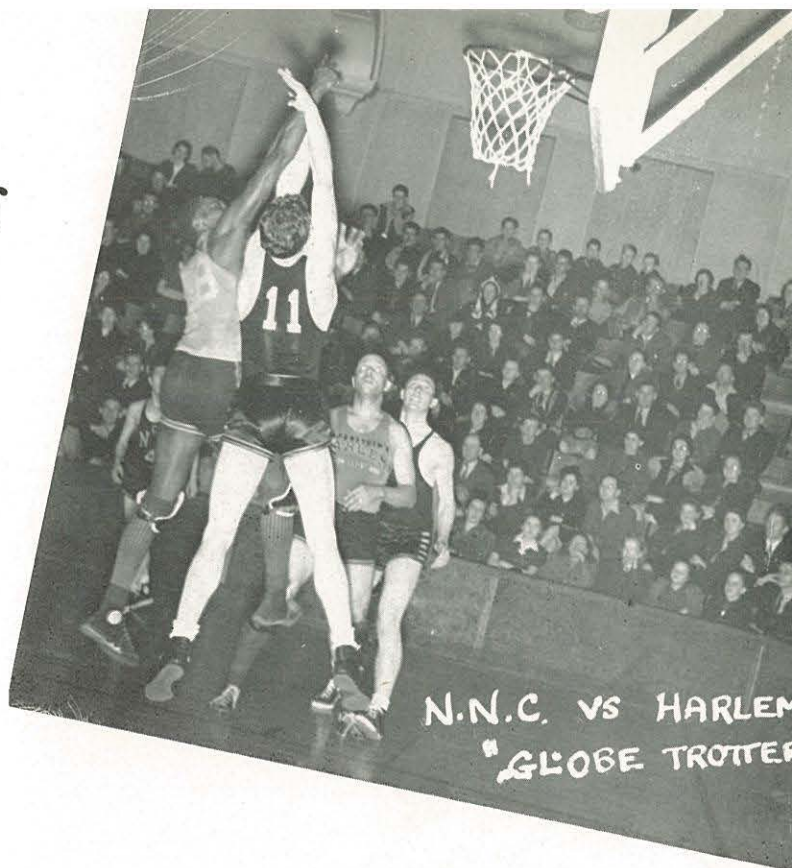
Donald Bartlow ..... *President*  
 Marguerite Spencer ..... *Secretary*  
 Harold Litsey ..... *Treasurer*  
 Jay Budd ..... *Vice-President*  
 Arthur Bates ..... *Program Chairman*  
 Phyllis Roberts ..... *Girls' Athletic Director*  
 Robert Dennis ..... *Men's Athletic Director*

### SECOND SEMESTER

Dick Kissee .....  
 Carol Hempel .....  
 Merrill Bennett .....  
 Edgar Kincaid .....  
 Ruth Mangum .....  
 Donna Ranum .....  
 Ells Bartlow .....

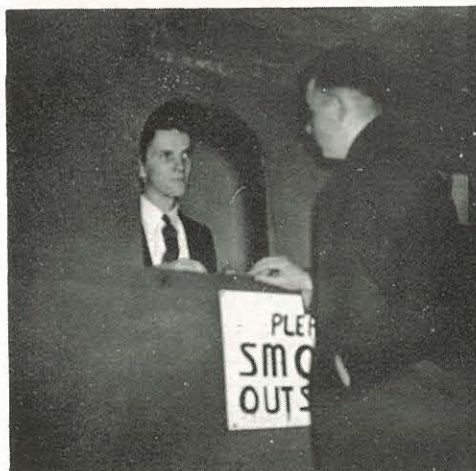
# Thrills

Hilarious clowning, well executed plays, and commando-like precision made the Harlem Globe Trotters game a riot of fun for both players and spectators. Now you see it, now you don't—but who can keep up with the ball in an affair such as this.



Capably handling the money passing to and fro at the ticket window, Jim Kayser stars as "Mr. Efficiency."

Whether they're winning or losing the coach always has some pointers and words of encouragement to give the boys between halves—and they are ready to go back into the game.





# *Men's Intramural Sports*

Intramural competition in softball, basketball, and other sports is a vital part of each day's activities on our college campus. When classes are dismissed, students and faculty alike find their way to tennis courts, athletic fields, or the gymnasium to watch the girls participate in their events.

The fall softball season with all of its excitement initiates new girls to N. N. C.'s intramural program. From then on, girls make their own records in college athletic annals. Interest runs high in girls' teams representing each society. Wins and losses are tallied, while all have their eyes and hearts steadfastly fixed on their goal—the faculty cup. In basketball, the S. L. A.'s set the pace, the Olympians offering stiff competition. In softball the same two teams were closely matched.

Tennis is a favorite with the majority of college girls, for all may take part. Spring gives the needed incentive and girls don tennis garb, grab rackets and balls, and head for the courts. Defeating all others, Velma Vail established herself as tennis champion in the first semester tournament.

Students again move to the softball diamond in the spring, where bats are selected and girls step up to the plate, determined to make a hit. Minor sports include ping-pong, archery, shuffleboard, and golf. Rivalry between the societies and good sportsmanship add to the enjoyment of the contests. Co-eds prepare for life and the future by keeping physically fit while having fun.

# *Women's Intramural Sports*

Softball, soon after the opening of school in the fall, initiated the intramural athletic program of N. N. C. The sports spotlight is first focused on the diamond at Kurtz Park, where warriors from literary societies battle for the honor and glory of their own beloved society. Competition is keen, demanding the best teams that can be put into the field. Consequently, the games are "thrillers," and from the first crack of the bat, the major leagues hold nothing over the "series" held at N. N. C.

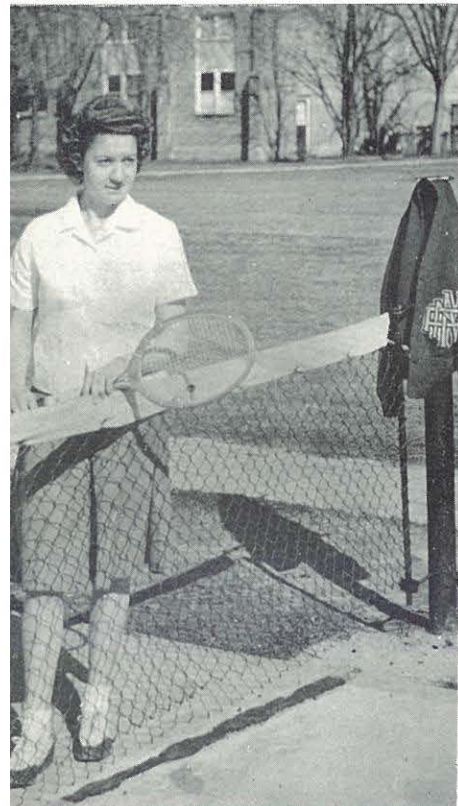
Following closely on the heels of softball in the athletic program is touch football. Kurtz Park is again the center of activity with the gridiron, there, taking the spotlight. Here teamwork at its best is seen in beautifully executed trick plays, blocking, passing, and punting. The ultimate goal is ever the narrow strip of "pay dirt" on either end of the field, which, if invaded, means a precious touchdown and possible victory. The societies proved equal to the demands and laurels were won on the football field, not by chance, but by hard fighting and clever strategy.

When cold winds and wintry weather finally best even the bravest of N. N. C. athletes, basketball comes to the fore in intramural sports. The college gym is invaded by ball hawks who sink "swishers" from way out and pot difficult corner shots along with the best. Although varsity players may not participate in intersociety basketball, the games lack none of the fire and clever ball handling seen in varsity games.

Volleyball, a minor sport at N. N. C., takes its place on the roster of intramural activity. Fast and exciting are the games between the societies and frequent upsets create intense interest.

Springtime, time of budding flowers, balmy breezes, and—yes—spring fever, sees the spotlight of intramural sports shared by baseball, tennis, golf, and track. Baseball talent abounds at N. N. C., insuring games of near professional caliber while large turnouts make the annual "field day" a memorable one. On this day, tracksters compete in the dashes, hurdles, shot putting, broad jumping, and other events of a true track meet. Competition here, also, is extremely keen and no records are safe while the intramural athletic societies of N. N. C. are "having it out."





## Women's Sports

Realizing the value of athletics as a form of recreation, N. N. C. girls place a great deal of emphasis on sports with nearly every girl having some activity in which she excels. Basketball and softball entertain the more robust girls, while minor sports such as golf or tennis make twosomes popular.

Freshman and Sophomore girls make their way twice a week to the gym where calisthenics are the order of the day. Emerging from this, each girl feels several pounds lighter. Especially in the spring, the bookworm vanishes and the campus is graced with femininity in colorful attire searching for a lost ball—or partner.

Climaxing an eventful athletic year, the track meet during commencement attracts parents, friends, and students while the girls reveal the results of a year's experience in racing, jumping, and other activities. Should some efficient co-ed break a former N. N. C. record, a scholarship is presented to her at the last Chapel service.







## *Men's Sports*

With an eye to the military future, the Physical Education Department has been extended to include activities such as Service Men's Gym. Shins are skinned, knees damaged, and muscles given a stiff work-out as men in the Army and Navy Reserve overcome a variety of obstacles, including climbing fences and jumping hurdles.

The boys enthusiastically applied themselves to the training, even practicing juijitsu in the dormitories at odd moments.

Boxing and fencing produced plenty of action in the gymnasium, while the advent of warm weather brought golf clubs, tennis rackets, bats, bows and arrows out of disuse.

Students never tire of the varied program which produces strong bodies for the crusaders of our country's future.





# *Revivals*



REV. U. E. HARDING

Conducted by the Reverend U. E. Harding, College Church pastor, and assisted by the Dixie Jubilee Quartet the Fall Revival Campaign proved to be a time of spiritual refreshing and help for the entire student body. Practical, heart-searching messages brought by Rev. Mr. Harding were supplemented by the inspirational music of the quartet.

Coming toward the close of a year made restless by war conditions, the Spring Revival, held by the Reverend Noble E. Berryhill, ex-marine evangelist, unloosed a tide of spiritual blessing outstanding in N. N. C.'s history. Each service found scores of hearts being dedicated to Christ as students found guidance from Reverend Berryhill's effective ministry. A series of prayer meetings broke out all over the campus with young people determining to keep alive the revival fires started by the spring campaign.



REV. NOBLE E. BERRYHILL



"Campus Devotions," the morning radio program, has become a favorite of our friends throughout Boise Valley. Students and faculty members take active part in presenting inspirational programs, consisting of musical numbers and sermonettes.

The Sunday morning church service is broadcast each week, sending the stirring messages of our pastor and choir renditions into the homes of "shut-ins" and those who are unable to attend church services.

This year has featured the beginning of classes in fundamentals of radio, conducted by Professor Finkbeiner. Many enrolled in classes, preparing themselves for future occupations and service to their country.



# *R a d i o*





# *Zeta Kappa Rho*

Zeta Kappa Rho honor society was organized in 1939 for the purpose of encouraging high scholarship among under-graduate college students. At the time of organization any student maintaining a grade-point average of 2.25 for a year's work automatically became a member of Zeta Kappa Rho for the following year. By recent faculty vote the required grade-point average has been raised to 2.4. Three items are necessary for yearly membership: A student must have been enrolled in school for the full year; he must have been carrying at least twelve hours of college classes; he must have maintained a grade-point average of 2.4.

DeWitt McAbee is the president of Zeta Kappa Rho. He, with Lois Bowman and Eleanor Ernest, enjoys the distinct honor of having a straight "A" average for 1941-42. Other active members of the organization are the following: Lydia Markusen, Dean Campbell, Betty Edes, Hazel Freeburg, Wilber Rogers, Donna Wilson, Wesley Young, LaVerne Rickard, Archie Wilson, Don Bartlow, Evelyn Reichenberger, Beulah Sheppard, Jay Budd, Beatrice Wilson, Marjorie Williamson, Ella Zimbelman, and James Kayser.

## *ZKP*



# Awards



HUGH McDOWELL

All-Round Student Plaque  
R. J. Smith Debate Cup

MORRIS CHALFANT

Alumni Publicity Award

LEWIS ROBERTS

Bonnie Dhu Bean Orchestra Trophy

VIRGIL VAIL

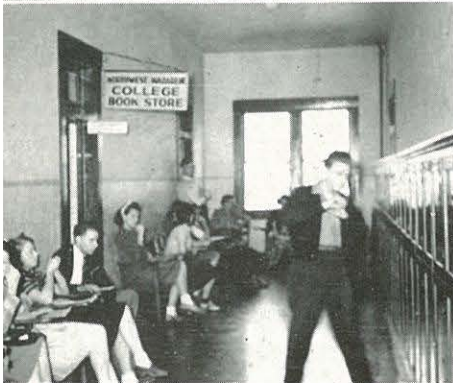
R. J. Lush Band Trophy

TED LANCASTER

Doris Gale DeLong Music Plaque







The big rush starts the moment students begin to arrive in the fall . . . unpacking and getting settled . . . waiting in line for hours . . . forming twosomes for the student-faculty reception . . . initiation week activities with the frosh taking a hazing and liking it . . . queer costumes . . . odd behavior.



eve with the a cappella choir—a hayrack ride, beautiful moon, and all the weiners and buns I could eat gave me indigestion and a swell time!

Santa Claus himself, or a reasonable facsimile thereof, came around Christmas night and distributed gifts at our party in Morrison Hall. What did I ever do to deserve a pea shooter tied with red and white ribbons?

Jan. 8—I guess I can whip up more of an interest in that volume of Browning's poetry I've been reading since seeing the Olympian play, "After Wimpole Street." I pulled that line, "I shall but love thee better after death" on my escort on the way home, but I could readily see that it didn't go over—he thought I was being insulting. Here's where I spend Sunday afternoon alone!

Jan. 11-13—I wish I'd spent more time studying and less trying to impress that boy that always waits for me by the bulletin board between classes. Exam week always reminds me to start a drive for progressive education—and to borrow Jane's coffee ration stamp.

Jan. 14-15—This registration business is old stuff to me by now—I can argue about the number of hours I'm taking, along with the seasoned veterans.

Jan. 27—We're having to get along without the S. L. A.'s today on account of most of them have their noses too high in the air to notice us—they won the faculty cup and they're plenty proud!

Feb. 8—One of the best A. W. S. traditions came to light today when we drew for our Heart Sisters. From now until Valentine's Day we try to be thoughtful and considerate—a small price to pay for having our own rooms cleaned and shoes shined in return, not to mention mysteriously appearing snacks and lunches.

Feb. 12—Dan Cupid really had a field day slinging arrows among Men's Club and A. W. S. members tonight at their formal Valentine dinner. Valentine place cards, the hum of interesting conversation, and the fragrance of bright corsages intermingled to add gaiety to the event.

Feb. 16—Maybe we can all agree with one another this week—the debaters left today for a tournament at McMinnville, and frankly, we miss the breeze.

Feb. 24—Commandos aren't the only people that can launch successful campaigns—N. N. C.'s Victory Drive to reduce the school's indebtedness got under way tonight when Rev. D. I. Vanderpool, board of regents chairman, helped raise over \$5,525 in pledges at our mid-week prayer meeting.

Feb. 26—After hearing Percy Grainger, world renowned pianist, give a concert here tonight, I've decided to cut my after-school coke session shorter and head for the Music Hall to practice.

Mar. 1—I'll never be the same after watching the Crusaders trim the C. of I. basketball team 46-41 tonight at Caldwell in the closing game of the season. I'll miss sitting in a crowded gymnasium, eating cold hot dogs and drinking cokes while yelling my lungs out for dear old Alma Mater—maybe I'll have more time now to practice with my yo-yo.

Mar. 8-14—We turned our attention to spiritual values this week as the Rev. Noble Berryhill, ex-marine evangelist, arrived to conduct our spring revival. Almost unequaled in the school's history, the meeting set countless students to thinking seriously along religious lines. We stayed up most of the night on several occasions holding prayer meetings in the dormitories.

Mar. 23—I never realized before that there was

so much work connected with the invention of that clever little black box over which Joe College and I goo at each other for hours at a time, until I saw the Olympian play tonight—"Telephone Number One" really rang the bell!

Mar. 25—I wish a talent scout could hear me warbling in the bathtub—then maybe I could have gone with the A Cappella Choir today.

April 8—To think that I had come to College to learn how to do house cleaning! Campus Day—and here I am going from bubble to slosh, up to the ears in soapy water giving baths to little windows—what a pane! Food at the close of the day does help compensate though, and think how ultra smooth our campus will look.

April 9—Lambda Sigma Pi's really did themselves proud with their contest program tonight—I didn't even notice the new couples, I was so interested!

April 14—Seniors donned their academic gowns today and all over the campus timid underclassmen were sneaking up cautiously to said dignitaries whispering, "Please may I touch you—just once?" Their investiture service was really impressive—I never realized before what intellectuals in goon's clothing we've been harboring all year.

April 16—New couples, new clothes, new lines—but old students—Juniors and Seniors, that is, having their annual banquet in Boise. A big dinner, speeches, reminiscences—all of these and S. P.'s too.

April 23—True to Alpha Delta Phi tradition, they presented another well-written and well-directed C. N. Harris play tonight—where there's an Alpha Delt program there's always an interesting evening.

May 6-7—Unfortunately college life can't all be S. P.'s, interesting talk sessions, cokes, and spring evenings—but into each life a few exams must come—for once though, there'll be no bench list issued.

May 8—The talent displayed at the Fine Arts program tonight made me really proud of our College—I went home feeling practically saturated in culture.

May 9—Baccalaureate Sunday makes one feel as though the school year is really gone—listening to the challenging address of the morning makes us promise ourselves that the eternal values which we caught sight of in this year at N. N. C. will forever remain before us.

May 11—I've rushed around today until I feel limp as a week-old ice cream cone, what with the Senior program and S. L. A. play, plus frantic efforts to find time for leisure.

May 12—Alumni Homecoming Day—we stood watching the old grads arrive and tried to pick out which ones carved which initials on the desks in our English classroom. The "Alums" look like such a swell bunch that we unconsciously chalked up another point for N. N. C., for turning out such a successful group.

May 13—Really, I'm not crying—it's just that, well, Commencement Day is swell and all that, but it's sort of hard to say good-bye. I was so proud I nearly burst when the Seniors marched up to get their sheepskins tonight and I keep thinking that if it's this hard for me to leave when I'm planning to come back next year, it must be pretty tough on the Seniors—however, four years of N. N. C. memories ought to be pleasing companions down through life—especially if all those years were as outstanding as this one.





Not all of College life is to be found in books or classrooms, for leisure hours make permanent memories . . . Halloween parties with no one recognizing the oddly draped clotheshorse next to him . . . Seniors trekking to Ferncroft Lodge for the week-end and Juniors giving them a gay welcome home . . . music, food, moron stories, and entertainment.





Feeds and long talk sessions in Morrison Hall at night occasionally interrupted by ye olde Oasis editor and his flash camera.... getting a little cramming done while lying in bed listening to a muted radio.... somewhere to go every minute.... never time for those extra hours of sleep we were always promising ourselves.... such is the panorama of N. N. C. activities.



WE ARE HERE  
TO  
SERVE YOU

NORTHWEST  
NAZARENE  
*College Church*

Sunday School . . . . .	9:45 A.M.
Morning Worship . . . . .	11:00 A.M.
Juniors and N.Y.P.S. . . . .	6:45 P. M.
Evangelistic Service . . . . .	7:45 P. M.
Mid-Week Service (Wed.) . . . .	7:45 P. M.

Pastor . . . . .  
U. E. HARDING

Assistant Pastor . . . . .  
E. T. LANCASTER

GIVE OUR  
WELCOME  
A TEST



J. Evelyn Fox, R.N.  
Superintendent

The five-year Nursing and Arts Curriculum leads to a Bachelor of Science in Nursing degree. Whenever possible students should elect the five-year in preference to the three-year curriculum because the preparation given is broader and graduates from the five-year course are in greater demand. Candidates who anticipate entering the missionary field should plan to take the five-year course.

N. Ammons  
Business Manager



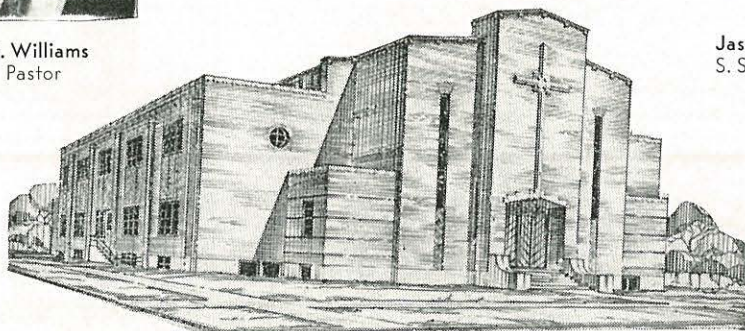
Information may be obtained from  
**SAMARITAN HOSPITAL**  
 NAMPA, IDAHO





J. E. Williams  
Pastor

WE CONGRATULATE YOU!  
NORTHWEST NAZARENE COLLEGE



Jas. Felter  
S. S. Supt.

## First Church of the Nazarene

Second at B. Street  
YAKIMA, WASHINGTON

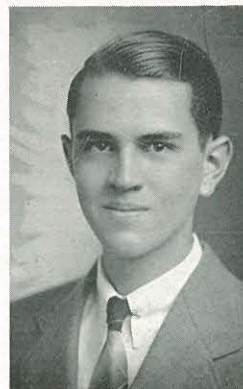


Nina Barrett  
W.F.M.S. President

BROADCAST—K I T—1280 KILO

Sunday 8:00-9:00 P. M.

Daily 5.45 P. M.



Ken Potter  
N.Y.P.S. President

MEETING THE WAR TIME  
TRANSPORTATION  
EMERGENCY

# GREYSTONE CAB COMPANY

FAST—DEPENDABLE  
24-Hour Service

The Greystone Cab is owned and operated by  
MR. JONES





# THE NORTHWEST DISTRICT

Extends Sincerest Good  
Wishes to  
NORTHWEST NAZARENE  
COLLEGE

D. I. Vanderpool, Dist. Supt.

REV. LAWRENCE H. BONE	-	-	-	-	-	N. Y. P. S. President
REV. MILO L. ARNOLD	-	-	-	-	-	- - - Treasurer
MRS. D. I. VANDERPOOL	-	-	-	-	-	W. F. M. S. President

## CLEM'S CORNER SERVICE STATION

"Try our Friendly Service at the sign of the  
Flying Red Horse"

11 Ave. 3rd St. So. NAMPA Phone 1011-J

CLEM WECKER, Manager

## DID YOU KNOW?

Right in Nampa, there is a fine selection of Bibles,  
Religious Books, Pictures, Plaques, Mottoes, Scrip-  
ture Text Stationery, Greeting Cards, Pencils, Book  
Marks, and many other articles and Booklets.

CALL OR WRITE US FOR PRICES

**Nampa Bible, Book, and Gift Store**

1409 2nd St. So.

Nampa

GEORGE H. BAUERLE, Proprietor

# PENNY WISE DRUG STORE

"ALWAYS A LOWER PRICE"

**E. B. POWELL**  
PRESCRIPTION CHEMIST

1305 2nd St. So.

NAMPA, IDAHO

Phone 154

Remember our Merchants' Lunch  
**25c—30c—35c**  
From 11:30 to 2:00

# FAY'S PETER PAN

WE MAKE OUR OWN ICE CREAM

## DR. RAY E. BLICKENSTAFF DENTIST

Studio Dental Office Telephone—113  
1023 4th St. So.

## NAMPA FLORAL MINDENS

"Say It with Flowers—But Say It with Ours!"  
1207 2nd Phone 56

## BRANDT AGENCY

REAL ESTATE—LOANS—INSURANCE  
204 12th Ave. So. Nampa

## WILSON'S

Nampa Reliable Jewelers  
WATCHES—JEWELRY—GIFTS  
FINE DIAMONDS  
Nampa, Idaho Phone 3124

FOR QUALITY WORKMANSHIP

# PARSONS' SHOE SHOP

WE HAVE COMPLETE SHOE REPAIRING EQUIPMENT  
NAMPA, IDAHO

# THE NORTH DAKOTA DISTRICT

Voices a verY  
keen interest In the pRogress of our  
peerless college, and prediCts Outstanding achievements and  
vicTory.

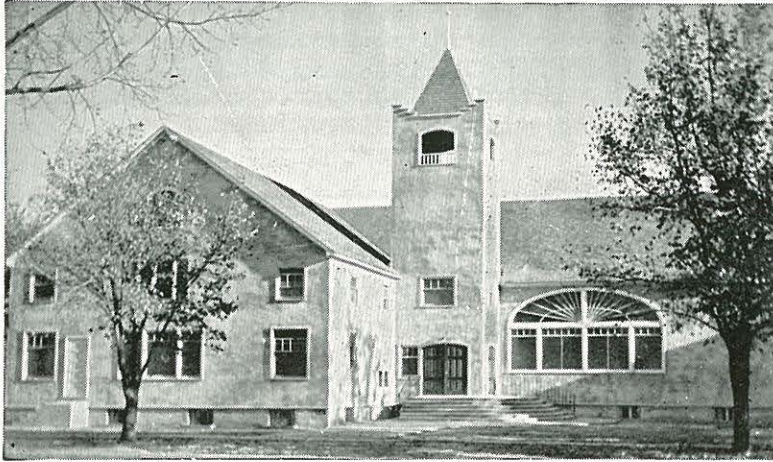
L. E. GRATTAN, Dist. Supt.  
MRS. C. E. SODERHOLM, W.F.M.S. Pres.

H. F. TAPLIN, N.Y.P.S. Pres.  
A. M. Long, Church School Chairman



# FIRST CHURCH OF THE NAZARENE

600 15th Ave. So.—Nampa, Idaho



Melza H. Brown  
A.B., Th.B.  
Pastor Res.  
603 15th Ave. So.

A Good Church Home—A Welcome to Friends

"God is known in her palaces for a refuge."—Ps. 48:3.

## THE NORTH PACIFIC DISTRICT

A FRIEND OF N. N. C.

**REV. ARTHUR COOK**

President of the District N. Y. P. S.

**REV. FRED M. WEATHERFORD**

Chairman District Sunday School Board.

**MRS. DOLA HOLMES**

President District W. F. M. S.

**E. E. MARTIN**

District Superintendent

68 Churches

4800 Members

Twin Rocks, Ore.

Young Peoples'

Institute

Camp Meeting

Portland, Oregon



Rev. R. H. Cantrell District Supt.

## THE MINNESOTA DISTRICT

CHURCH OF THE NAZARENE

Assembly and Camp Institute—JUNE 9 through JUNE 17

### SPECIAL WORKERS

DR. H. V. MILLER, General Superintendent

DR. L. A. REED, Pastor Chicago First Church

# NAZARENE HELPING HAND SOCIETY

formerly Burial Benefit Association

An organization within the bounds of the Idaho-Oregon-Utah District Church of the Nazarene, the members of which are banded together constrained by their love of God and one another to contribute to funeral expenses of its members.

Mrs. Nona D. Swigart  
Sec.-Treas.  
204 Juniper St.

NAMPA, IDAHO

Phone 1159

## N.N.C. GENERAL MISSIONARY SOCIETY

President—EDGAR KINCAID

### PURPOSE:

To incite the students of Northwest Nazarene College to work for the success of missions.

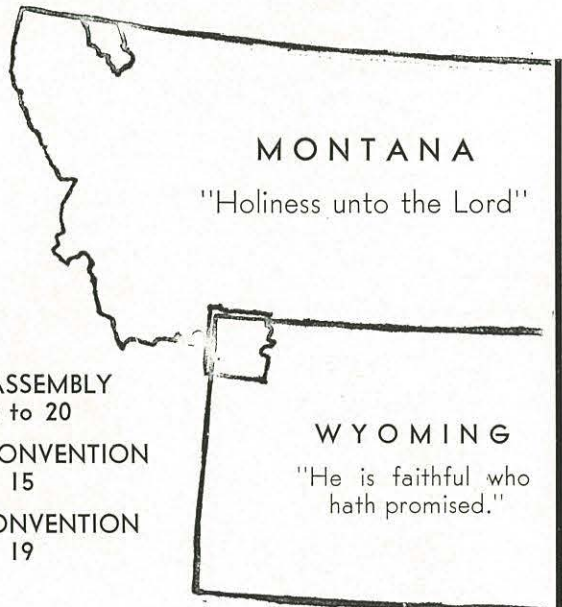
## THE ROCKY MOUNTAIN DISTRICT WELCOMES YOU!

God's Land of Christian  
Opportunities



Rev. W. A. Eckel

DISTRICT ASSEMBLY  
June 15 to 20  
W. F. M. S. CONVENTION  
June 15  
N. Y. P. S. CONVENTION  
June 19



A Great District with a Capable Leader, Offering Great Opportunities for Definite Christian Service

For information, write REV. W. A. ECKEL, Dist. Supt., P. O. Box 573, Laurel, Montana



# CHEESBROUGH LUNCH

Comfortable Air-Conditioned Cafes for Our Patrons

A CAFE FOR ALL OCCASIONS

A place where you can get what you order and order what you get

NAMPA——CALDWELL

## LESTER HAMILTON

JEWELER

## DODGE'S RELIABLE DRUG STORE

"Choose your Druggist  
as you choose your  
Doctor"

PHONE 92—NAMPA

THE PORTRAITS REPRODUCED IN THIS BOOK  
WERE MADE BY

# WRIGHT'S STUDIO

NAMPA, IDAHO

Printers of the  
N. N. C. CRUSADER and MESSENGER

"Printing That Pleases"

Publishers of the Canyon County News

## GEM STATE PRINTING CO.

1310 2nd St. So.

NAMPA

Phone 86

"Where the Charm of Newness is Restored  
with Lusterizing"

## NAMPA DRY CLEANERS

RAY S. MORRIS, Manager  
Phone 29

1015 2nd St. So.

Nampa

## WOLFE'S SHOE RENEWING

Invisible Half-Soling  
SHINE PARLOR

Phone 263-W

115 12th Ave.

NAMPA, IDAHO

# Christian Workers' Band

"Toward the Great Commission"

President	- - - - -	WILBER ROGERS
Vice-President	- - - - -	STANFORD ERNEST
Treasurer	- - - - -	JAMES KAYSER
Secretary	- - - - -	BEULAH SHEPPARD
Sponsor	- - - - -	REV. U. E. HARDING

### OUTPOINTS

Red Top	- - - - -	VIRGIL GROVER
Ten Mile Heights	-	STANFORD ERNEST, MORRIS CHALFANT
Liberty	- - - - -	RAY FRIBERG
Valley View	- - - - -	WILBER ROGERS, FRANK COOK
Nampa Old Folks Home	- - - - -	FRED HILLS



# NORTH NAMPA CHURCH OF THE NAZARENE

Corner of 12th Ave. and Third St. No.

REV. W. A. O. WILSON, Pastor

—RADIO PROGRAMS—  
KFXD

N.Y.P.S. 7:00

Sat. 8:45 A.M.

Sun. 5:00 P.M.

Sunday School 10:00

## R & V OIL CO. STANDARD OIL PRODUCTS

LUBRICATION

CAR WASHING

24-hour service

124 11th Ave. So.

Nampa

# R. & V.

NAMPA

CALDWELL

WILDER

Always Boosting for N. N. C.

## IDAHO FREE PRESS

NAMPA'S DAILY NEWSPAPER

## VIC STOLLE

"YOUR DRUGGIST"

In business for your health

"I'll meet you at the fountain at Stolle's."

## BULLOCK JEWELRY STORE

DIAMONDS

NAMPA, IDAHO

ACROSS FROM MINDEN'S FLORAL

## QUICK LUNCH

Follow the Crowd for Better Food and Prices

Serve Hot and Cold Lunches

# FLETCHER MOTOR COMPANY

ALLEN FLETCHER, Manager  
223 13th Ave. So.

IGNITION and  
CARBORATION  
REPAIRING

GENERAL MOTORS TRUCKS  
Sales and Service  
PHONE 60

GENERAL  
OVERHAULING

Stop Wear Lubrication

Tire and Battery Service

## BLUE HAVEN BARBER SHOP

"THE COLLEGE SHOP"

Where Young Men are Made to  
Look Their Best

1409 2nd St. So.

Nampa

STOP IN AT

## VAIL PRODUCE CO.

"Checkerboard Corner"

FOR  
COAL—FEED  
SEED

## HAZZY'S

FOR SCHOOL SUPPLIES  
and Greeting Cards

"HAZZY'S HAS THE BEST"

## CITY DYE WORKS

Expert Cleaning and  
Pressing

STUDENT AGENT AT THE COLLEGE

HERE YOUNG AMERICA IS SERVED  
EXCEEDINGLY WELL

# OWYHEE HOTEL

BOISE

IDAHO



# Northwest Nazarene College

A CHRISTIAN COLLEGE fully accredited by the Northwest Association of Colleges. Also a member of the Association of American Colleges.

- ★ A growing Academy
- ★ A Four-Year Senior College
- ★ A Graduate School of Theology
- ★ A Department of Art, Music, and Public Speaking

## Many Interesting Activities

- ★ Religious—Missionary Societies, Christian Workers' Band, Church
- ★ Music—A Cappella Choir tours, Glee Clubs, Orchestra, Band, Radio Programs
- ★ Public Speaking—Debate tours, Private work
- ★ Athletics—Baseball, Basketball, Tennis, Minor Sports
- ★ Socially—Association with splendid Christian Young People

ECONOMICAL EDUCATION IN A SPIRITUAL ATMOSPHERE

Write For Information  
LEWIS T. CORLETT, President  
NAMPA, IDAHO

# SELLWOOD Church of the Nazarene

S. E. 16th Ave. at Spokane  
PORTLAND, OREGON

AN IDEAL CHURCH HOME

FRIENDLINESS  
SPIRITUALITY  
EVANGELISM

**ROBT. W. COULTER**—Minister  
Residence 7517 S. E. 17th  
Phone LANcaster 4401

SUNDAY SCHOOL - - - - 9:45 A. M.  
Grafton Smith, Supt.  
YOUNG PEOPLE'S SOCIETY - - 6:30 P. M.  
Harold Nevin, Pres.  
W. F. M. S. - - - First Thursday of Each Month  
Mrs. A. A. Reck, Pres.



## THE NAMPA CLINIC

THOS. E. MANGUM, M.D.—General Diagnosis, Surgery  
WILLIS C. NOLTE, M.D.—General Diagnosis, Surgery  
ERNEST D. HUNSAKER, M.D.—Eye, Ear, Nose, and Throat  
FIRST LIEUTENANT J. R. MANGUM—Aviation Medical Examiner, Army Air Corps

MEDICAL ARTS BUILDING

Nampa, Idaho

Phone 533

## KAMPUS KORNER GROCERY

"THE COLLEGE HANGOUT"

Meats  
Luncheon Service  
Vegetables

School Supplies  
Fruits and Candy

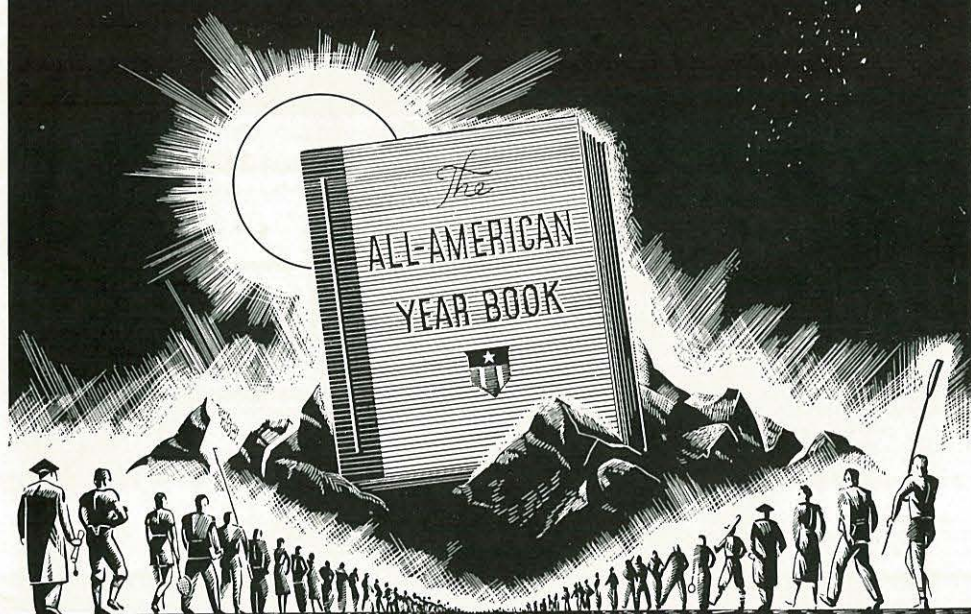
Soft Drinks  
Cream, Drugs, Lotions

E. M. EDES, Prop.

Phone 1130



**Western Engraved  
Annuals are  
BETTER  
ANNUALS**



*Western* ENGRAVING & COLORTYPE COMPANY  
EIGHTH AVENUE AND VIRGINIA STREET · SEATTLE