

The Nautilus  
for 1942



The first part of the document discusses the importance of maintaining accurate records of all transactions. It emphasizes that every entry should be supported by a receipt or invoice, and that these documents should be stored in a secure and organized manner. The text also mentions the need for regular audits to ensure the integrity of the financial data.

In addition, the document outlines the procedures for handling discrepancies and errors. It states that any irregularities should be investigated immediately and reported to the appropriate authorities. The text also provides guidance on how to deal with changes in accounting policies and standards, ensuring that the organization remains compliant with all relevant regulations.

Finally, the document concludes by highlighting the role of the accounting department in providing valuable insights into the organization's financial performance. It suggests that regular financial reporting and analysis can help management make informed decisions and improve overall operational efficiency.



## *Foreword*

On May 1, 1941 there was a fire at Eastern Nazarene College. The burned, useless Canterbury building, housing the chapel, fine arts studios, and printing press, seemed to spell disaster. In September a new school year opened with a reconstructed Canterbury, beautiful and more completely equipped than at any time before.

Strikingly, this illustrates the spirit of E.N.C., which is constantly overcoming obstacles in the strength of Jesus Christ. Strikingly, it symbolizes the promise of the Lord that we of E.N.C. are proving continually: "The flame shall not hurt thee; I only design thy dross to consume and thy gold to refine."



**G. B. WILLIAMSON**

*President*

# Dedication

Because you typify the overcoming spirit of E. N. C.:

Meeting with wisdom and aggressiveness the staggering problems of a small struggling college . . .

Tackling these problems with unshaken confidence in God in obedience to His commandment, "Be strong and of good courage" . . .

Working indefatigably until within six years after you became president of E. N. C., the school's indebtedness has been reduced \$60,000, power has been granted to confer three additional academic degrees, the future holds promise of admission to the New England Association of Colleges, and the esteem of the constituency and of the local community for E. N. C. has mounted steadily. . . .

Withal, ever heeding your call of God to preach the gospel and doing your full share toward keeping E. N. C. alive for Christ . . .

Because you have overcome in humility, in faith, and in the strength of the God who has promised to him that overcometh, the crown of life,

We dedicate the 1942 volume of the **Nautilus** to you,

*President Gideon B. Williamson*



# *Contents*

FACULTY

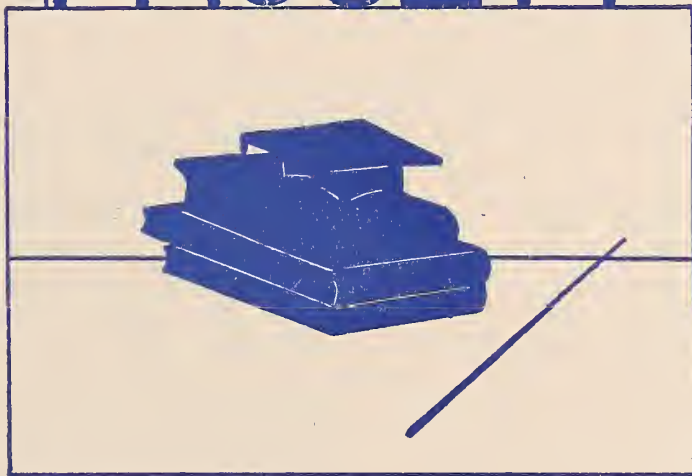
CLASSES

ACTIVITIES

SPORTS



# f FACULTY



*"Fire is the test of gold; adversity, of strong men."*



Digitized by the Internet Archive  
in 2013

<http://archive.org/details/nautilus1942unse>

# Board of Trustees

Dedication to a living cause has motivated the Board of Trustees in guiding and strengthening the advancement of Eastern Nazarene College.

Authorization to grant additional degrees, the expansion and improvement of the library and laboratories, steady progress toward regional accreditation and increased prestige, the campaign to reduce indebtedness—all these have been a deep concern and a vital interest to the trustees.

E. N. C.'s material growth has been uppermost in the Board's mind—and E. N. C.'s spiritual growth has been foremost in the Board's heart. Under such direction the future of the College is assured, and true Christian progress will continue to be its dominating desire.

## New England District

John N. Nielson      Melrose, Mass., Vice-chairman  
John Gould              Wollaston, Mass.  
John E. Riley            Portland, Maine  
Leonard Spangenberg      Waban, Mass.

## New York District

J. C. Albright            Richmond Hill, New York  
L. S. Tracy                Brooklyn, New York

## Albany District

A. M. Babcock            Wilmington, New York  
William S. MacPherson      Lowville, New York

## Washington-Philadelphia District

M. Kimber Moulton        Baltimore, Maryland  
D. E. Higgs                Mt. Hays, Maryland  
E. E. Grosse                Washington, D. C.

## Pittsburgh District

O. L. Benedum            East Liverpool, Ohio, Chairman  
E. S. Carman              Cleveland Heights, Ohio  
Maurice R. Emery        Warren, Penn., Treasurer  
Ira K. Akers                Akron, Ohio

## Ontario District

Roy H. Cantrell            Toronto, Ontario, Canada  
A. E. Collins                London, Ontario, Canada

## Alumni Representative

Wesley G. Angell        Newtonville, Mass., Secretary



O. L. BENEDUM  
Chairman



PRESIDENT G. B. WILLIAMSON, A.B., D.D.

"With God's help, we can triumph." . . . devoted to his home, his college, and his church . . . holds unswervingly to his principles . . . wisdom . . . a dignity that is commanding.



BERTHA MUNRO, A.M.

**Dean of College, English Literature**

Smiling, cheerful, she is the guiding hand of our college career . . . inspiration in her very countenance . . . humility of wisdom . . . nobility of spirit . . . "They shall rise up and call her blessed."



EDWARD S. MANN, A.M.

**Assistant to the President**

The man we both fear and love . . . thorough, genial . . . above all, sincere and helpful . . . strong physically, keen mentally, dynamic spiritually . . . appropriately witty . . . enthusiasm tempered by maturity.



JAMES HOUSTON SHRADER, Ph.D.

**Chemistry**

A brilliant scholar in a dignified personality . . . friend of all . . . editor, lecturer, author, publicity director . . . pointed humorist . . . true perspective . . . widely recognized, warmly respected.

SAMUEL YOUNG, A.M.

**Theology**

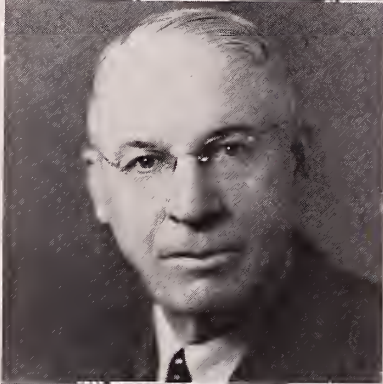
Keen understanding and good Scotch humor. . . . We find in his thoughts ideals to aim at, and in his words the wisdom of the sages . . . sympathetic sharer of young preachers' problems . . . shepherd's heart.



FRED J. SHIELDS, A.M., Ed.M., D.D.

**Psychology, Sociology**

His laughter often dispels our gloom . . . our understanding confidant . . . loves and lives his religion . . . striking sense of humility . . . skillful creator of attention in class.



MARY HARRIS, A.M.

**French, Spanish**

We admire her faith and constancy . . . high principles . . . in few words she says a lot . . . undaunted . . . subordinates all to the call of God . . . interesting conversationalist.



RALPH EARLE, JR., B.D., A.M., Th.D.

**Biblical Literature**

Inspiringly practical as a teacher and adviser. . . . His life encourages us to be sincere, thoughtful Christians . . . deep in intellect, broad in understanding.



Just a few words of appreciation for your work as a Sunday school teacher, and for your gracious spirit. The occasions about table in the dining hall will long be remembered.

Vernon Groves  


The Dean's  
 E. N. C.



VERNON T. GROVES, A.M.

**Education**

There is not a trace of shirking in him . . . lives a well-rounded life . . . fervent Christian character . . . good-natured humor . . . zealous Sunday School superintendent . . . patience that never runs out.



EDITH F. COVE, M. MUS.

**Piano, Theory of Music**

Her constant Christian life is an inspiration . . . bubbling personality . . . a real scholar in music . . . marvelous energy . . . enthusiastic worker with young people . . . loves life . . . appreciates good humor.



ALBERT F. HARPER, Ph.D.

**Visiting Professor of Philosophy**

His active personality brightens the depths of philosophy and makes it meaningful to us . . . deeply ingrained cheerfulness . . . practical optimism . . . irresistible smile supported by an indomitable spirit.



ALICE SPANGENBERG, A.M.

**English**

Always prepared to lend a helping hand . . . a friend of all who know her . . . as refreshing as an April shower . . . varied interests . . . practical-minded Christian . . . expressively original.

KENT GOODNOW, A.M.

**Classical Languages, German**

Astute and conscientious, we find in him a friendly adviser . . . painstaking and diligent . . . eager in the pursuit of learning . . . unceasingly patient . . . quiet twinkle in his eye . . . unassuming.



AUDREY J. WILLIAMSON, A.M.

**Speech, Orchestra**

She is one on whom we can rely . . . versatility personified . . . powerful, prayerful Christian . . . never too busy to do something helpful . . . devoted to her husband and his work . . . a vibrant, cheery disposition.



J. VERNER BABCOCK, A.M.

**Biology**

Quietly friendly, brilliant . . . thoroughly engrossed in his work . . . a course with him gives us new zest for living, makes us appreciate the wonder of life.



MERVEL P. LUNN, A.M.

**History**

He makes us see history in its relation to the whole of life . . . original in his thinking . . . warm-hearted . . . example of Christianity lived every day.





JAMES R. NAYLOR, B.S., A.M.

**Dean of Men, Mathematics**

Cold mathematical logic seems secondary as we meet this congenial dean of men . . . tall and powerful, physically and mentally . . . hospitality of the West . . . frank sincerity.



ESTHER D. WILLIAMSON

**Dean of Women, Voice**

She is the girls' wise and considerate "mother" . . . jovial nature . . . capable voice teacher . . . undisturbed by a difficult task . . . amiable . . . steadfast in her spiritual life.



DORIS GOODRICH SOTERIADES A.B., B.S.

**Librarian**

There is order in her nature . . . proficient . . . a growing library—a result of her skillful supervision . . . a high standard of simplicity in her religion . . . respected because she respects.



OLIVE BYNON MARPLE, A.B.

**Piano**

Thorough . . . pleasant friendliness . . . an accomplished musician. . . Her faithfulness to her work is outstanding . . . challenging individualism . . . constant composure . . . has the interests of the students at heart.



RUTH I. EDE, A.B., Ed.M.

**Commercial Subjects; Secretary to the President**

Willingly, unobtrusively, she performs many tasks that are necessary but promise no tangible reward . . . eternal vigilance . . . sanely ambitious for greater knowledge . . . wide range of interests that make a good conversationalist.



JUNE ROMIG, A.B.

**Piano**

We admire her sincerity . . . a reliable accompanist . . . spreader of cheer . . . simple piety . . . greatness of Christian devotion . . . firm in her convictions . . . winsome spirit . . . courageous enthusiasm.



MADELINE N. NEASE, A.B.

**Registrar**

Her humble attitude compels our respect . . . a deep spiritual character . . . systematic and consistent . . . industrious . . . conservative . . . a registrar whose help and long-suffering we appreciate.



ANDREW RANKIN, A.M.

**Principal of Academy; Employment Manager; History**

Efficiency is his motto . . . eager . . . a business-like attitude . . . a good mixer . . . reads widely . . . freedom in God . . . a scholar . . . extensive active interests . . . quizzical humor.





HELEN MULLEN, A.B.

**Academy French, Latin**

Her aims are high . . . conscientious in all things . . . stability of character . . . encouraging . . . sensible . . . always has a fresh thought to brighten life . . . finds happiness in whatever she does.



ELLEN RITTENBURG, A.B.

**Academy English**

Her sweet disposition is a delight to us . . . a heart full of gladness . . . kind and gentle . . . a quick student . . . ambitious . . . a faithful Christian . . . striking sense of responsibility.



VERNON HEFFERN, A.B.

**Academy Mathematics**

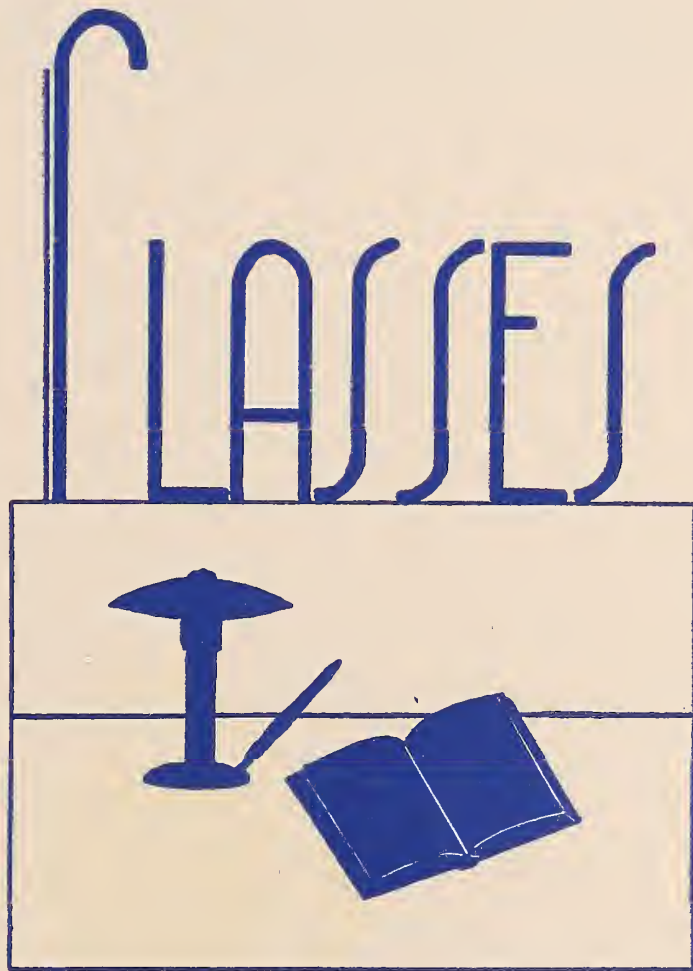
His courtesy is an example for us . . . resolute in mind . . . diligent . . . keen mathematician and patient tutor . . . steady, dependable . . . good-natured . . . ready for Christian service.



LOUISE DYGOSKI, A.B.

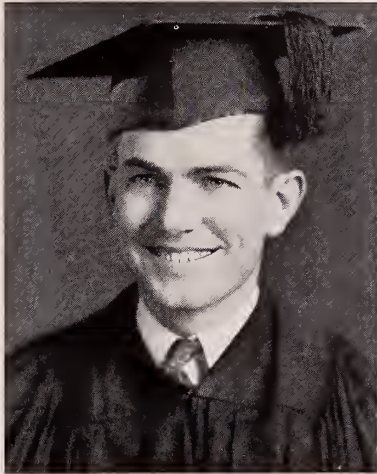
**Bookkeeper**

She brings a quiet New England charm as well into the busy whirl of the office as to the friendliness of social gatherings . . . keen interpreter of poetry . . . refined, low voice . . . lofty standards.



*"Great is truth. Fire cannot burn nor water drown it."*





William Benson



Donald Brickley



Dorothy Chesbrough

**WILLIAM BENSON**

**A.B. Biblical Literature**

Always in motion . . . a glutton for work . . . quietly independent . . . a stranger to discouragement . . . eyes on the goal  
radiant smile . . . natural humor . . . enjoys living to the full . . .  
approachable . . . ready to serve God . . . willing to help others.

**DONALD BRICKLEY**

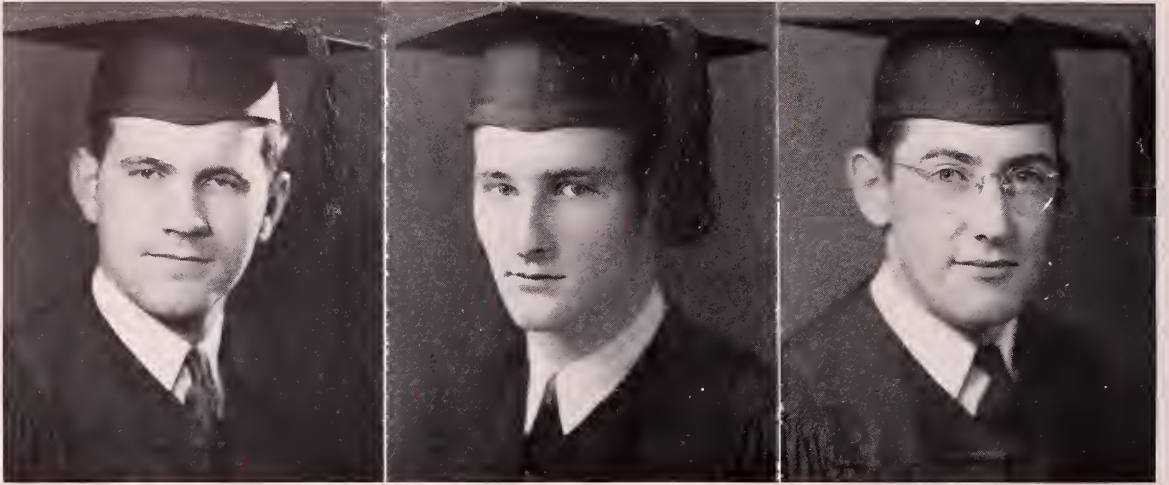
**A.B. Theology**

"Fire in his eye and papers in his hand" . . . jaunty and likable  
. . . the Brickley profile . . . spirits can't be dampened . . . breezy,  
pally . . . "Hiya!" . . . rural accent, urban inclinations . . . shoulders  
always thrust back . . . sharp, nervous, often abrupt . . . orthodoxly  
Christian.

**DOROTHY CHESBROUGH**

**A.B. Psychology**

Quick smile . . . has a keen realization of her duty and performs it . . .  
first to rise, last to bed . . . conservative, but given to surprising  
outbursts of roof-raising . . . sensitive . . . takes life seriously . . .  
reliable, logical New Englander.



Samuel Cole

Carl Crouthamel

George Dixon

**SAMUEL COLE**

**A.B. Philosophy**

Hair as dark as his name . . . sober, considerate . . . strong purpose and perseverance . . . always happy, even when the rent is due . . . likes to talk, especially about philosophy or preaching . . . one of the "senior half-dozen," the married men.

**CARL CROUTHAMEL**

**B.S. Chemistry**

Individualistic, reticent . . . Grecian profile . . . "the scientific method" . . . direct, conscientious . . . keen thinker and observer . . . originality and organization . . . "pluck and an iron will" . . . concentrated studiousness . . . independence and shrewd common sense.

**GEORGE DIXON**

**A.B. Theology**

Sweet singer, the man with the guitar . . . What's your opinion, doc? . . . proud of his British citizenship, but makes a good American . . . active fun-lover . . . hockey enthusiast . . . golfer deluxe . . . devoted to his life's task . . . British reserve . . . undoubted sincerity.

GEORGE DOUGLAS

A.B. Philosophy

Budding theologian . . . likes to juggle philosophical abstractions . . . not immune to occasional prolixity of expression . . . far-sighted . . . methodical in study and work . . . friendly sarcasm . . . mixes his fun with his labor . . . aware of life's problems, but not pessimistic.

RACHEL EMERY

A.B. Psychology

Intelligent versatility . . . inner radiance . . . satisfied only with the best . . . dislikes superficiality . . . reveals good taste in personal habit, external interests . . . keen insight . . . genuine concern for others . . . poise . . . emotions sensitive to the finest in life.

RUTH FRIEND

A.B. French and German

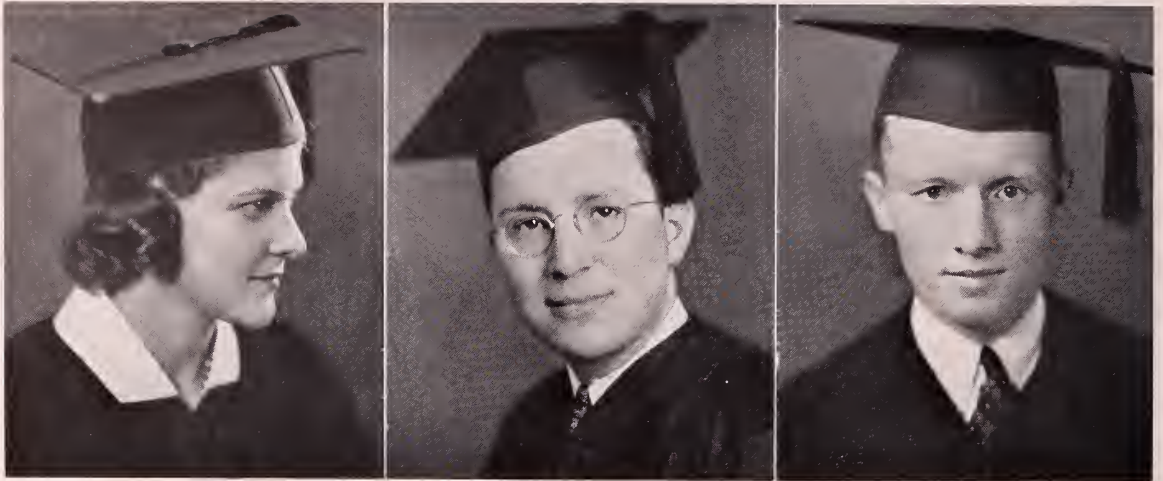
Walks with a purpose . . . "Friendly" to all . . . strong sense of fair play . . . leader . . . athlete . . . musician . . . le francais, el espanol, das Deutsch . . . gives her candid opinions . . . persevering determination . . . her religion is part of her daily living . . . gay, co-operative, but always "on her own."

George Douglas

Rachel Emery

Ruth Friend





Winnifred Gould

Paul Hetrick

Richard Howard

WINNIFRED GOULD

**A.B. Literature**

Efficient . . . business-like . . . slightly coy and capable of friendly mischief . . . the center of many a lively party . . . interests are diverse and variable . . . accomplished . . . "savoir faire" . . . observant . . . active . . . leadership ability . . . has confidence in herself and justifies it . . . determined.

PAUL HETRICK

**A. B. Biblical Literature**

One of the "settled-down-ers" . . . fluent of speech . . . wise in judgment . . . consistency of character . . . a good sport . . . quoter of quips . . . perpetrator of pranks . . . honest, easy-going . . . successful in and devoted to his calling . . . truly spiritual.

RICHARD HOWARD

**A.B. Philosophy**

Philosophical theologian . . . has well-grounded opinions . . . feels at home in a debate . . . hard worker with a deep sense of duty . . . willing to learn . . . knows what he wants . . . a steady Christian, unafraid to give his testimony . . . coming preacher.



ABBIE-JEAN KAUFFMAN

**A.B. Chemistry**

"ajk" has a gift for details . . . likes books, people, and clothes . . . has a passion for "doing" . . . cook, gardener, seamstress . . . excellent at handsprings and somersaults . . . manages chemistry and a kindergarten class equally well . . . affectionate, a giggler, she takes life on the chin.

ELIZABETH KAUFFMAN

**A.B. Psychology**

Artistic . . . delicately feminine in action, voice, ideas . . . meticulous . . . wants to understand people . . . refined . . . possesses assertive ability . . . a mind of her own but will be shown . . . likes things definite . . . diligent in study . . . intensely loyal.

LAURA MCKINNEY

**A.B. Mathematics**

Mellow voice and mischievous eyes . . . impression of repose . . . likes the black lines and dots of music and math . . . Puck and Titania by turns . . . fun-loving . . . often sedate and pensive . . . nightingale singer . . . languor hides a steadfast spirit.

Abbie-Jean Kauffman

Elizabeth Kauffman

Laura McKinney





Warren Mingledorff



Wilbur Mullen



Muriel Payne

*Mrs. Willison -  
Best wishes to a  
kind, considerate  
dear. Live with  
lots of fun with  
you & thei you  
& gained much  
inspiration.  
Muriel*

**WARREN MINGLEDORFF**

**A.B. Philosophy**

Everlasting good humor . . . organizer, leader . . . best head-waiter who ever skipped around . . . unbelievably expressive, yet the inner man is unknown . . . voice sweet as Georgia honeysuckle . . . reasonableness . . . moderation in all things . . . jovial and obliging . . . "true blue."

**WILBUR MULLEN**

**A.B. Philosophy**

Searching, unfathomable blue eyes . . . mentally and physically alert . . . intense, buoyant, poised . . . fired with a call to preach . . . logical, philosophical, musical, poetical . . . one who wears well . . . strong personal convictions and elevated ideals . . . trustworthy confidant.

**MURIEL PAYNE**

**A.B. Music; Piano Normal Certificate**

Mistress of the well-turned phrase and crystalline arpeggio . . . little-girl laugh and sphinx eyes . . . purposeful organizer . . . discreetly democratic . . . tactful and precise . . . can let down her hair and scream on occasion . . . modesty, tranquillity . . . assumes responsibilities cheerfully.

ALLEN PFAUTZ

**A.B. Theology**

Has the noble virtue of unobtrusiveness . . . lends his ears, but keeps his counsel . . . steady, hard worker . . . not hasty to act . . . dares to defend his convictions alone . . . loyal, earnest . . . firm believer in God and consecrated to His work.

LEE POWELL

**A.B. Mathematics**

Surface sophisticate . . . scratch deeper, and he has the eager interestedness of a boy . . . warm-hearted, candid, openly expressive . . . courtly . . . lithe and graceful on field or floor . . . a tease . . . determination . . . likes slang and sport . . . masculine aggression . . . enterprising executive.

ROSE MARIE SALVIA

**A.B. Theology**

Cookin', singin', preachin' . . . diminutive dynamite . . . excessive modesty . . . up and down feelings . . . likes "folks" . . . a jolly good fellow . . . given to fads . . . emotions near the surface . . . likes to tease and be teased . . . kind deeds, her specialty . . . "Excelsior," her motto.

Allen Pfautz

Lee Powell

Rose Marie Salvia





Anna Mary Shoff

Jean Shrader

Leslie Strathern

ANNA MARY SHOFF

**A.B. Psychology**

Flaming hair and an enthusiastic spirit . . . modestly dignified at a Student Council session, intense and swift on the basketball floor . . . steadiness of character, anchored in God, that pushes aside obstacles . . . merry twinkle . . . reserve which can melt in relaxation . . . amazing capacity for accomplishment.

JEAN SHRADER

**A.B. History**

Diversified talent . . . refined tastes . . . believes that life has real meaning . . . lives deeply . . . consistent . . . adaptable . . . sensitive to art, beauty . . . has a passion for order . . . frank but not outspoken . . . alert . . . full of life . . . intense . . . keen understanding.

LESLIE STRATHERN

**A.B. Theology**

The man with the plaid necktie and the accent to match . . . clear thinker . . . serious . . . ready to laugh . . . knows life's responsibilities and is not afraid to meet them . . . wants to see things go . . . tolerant . . . generous.

GEORGE WOLF

**A.B. Biblical Literature**

Not known for his much talking . . . solid . . . meaningful convictions . . . believes that life is what one makes it . . . difficulties are his stepping stones . . . faithful . . . unwavering in his loyalty to God . . . set apart for the ministry . . . considerate worker.

ARNOLD WOODCOOK

**A.B. Biblical Literature and Religion**

Rural beginnings . . . deep desire for success . . . likely to achieve . . . capacity for responsibility which he fulfills manfully . . . conscientious, sober, full of his call to preach . . . friendly, warm . . . idealistic . . . responds to religious fervor . . . conscious of the finer values.

JOHN YOUNG

**B.S. Chemistry**

Crinkly hair and eyes . . . face vanishes and white teeth appear in his famous grin . . . AC and DC his forte . . . tall tales his hobby . . . Vermont twang, reserve, and steadfastness . . . Scotch-Irish humor . . . full of quick movement . . . earnestly persevering.

George Wolf

Arnold Woodcook

John Young

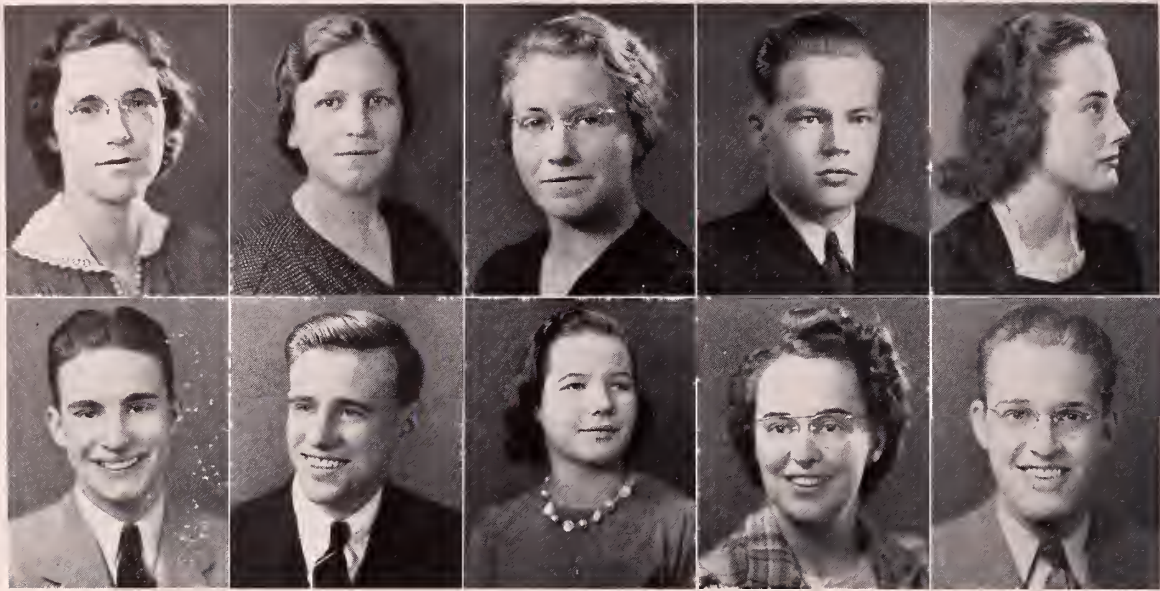




## IN MEMORIAM

The memory of one whom we loved as a classmate and cherished as a friend lives with us yet. The sterling character of Josephine Sweigert was a beautiful testimony to the presence and power of God in a human life. Not hers this year is the diploma of academic achievement, but she has already received the honor that surpasses all others—the crown of everlasting life.





Ruth Adsit  
Willard Bartol

Della Boggs  
Lyal Calhoun

Vaughn Clemans  
Carolyn Colcord

Norman Collins  
Ruth Gardner

Virginia Graffam  
Carl Hanks

## Juniors

**Ruth Adsit** . . . "Still water" . . . competent . . . good listener . . . radiates the warmth of simplicity and sincerity; **Willard Bartol** . . . cosmopolitan, suave . . . subtle cleverness . . . scientific bent . . . spirited fire of Pegasus; **Della Boggs** . . . Unassuming . . . purposeful activity . . . excels as a student . . . faithful to responsibilities . . . commands respect; **Lyal Calhoun** . . . Our Horace Greeley . . . acme of versatility . . . militant convictions . . . a tang of Mississippi' **Vaughn Clemans** . . . Serious of mind and purpose . . . unmistakable, uncompromising opinions . . . keen student . . . lives intensely; **Carolyn Colcord** . . . Placid amiability . . . daughter of Pythagoras . . . calm acceptance of facts with outbursts of frivolity; **Norman Collins** . . . Resolute . . . constant . . . phlegmatic exterior . . . pithy . . . "it's the set of the sail"; **Maxine Fawcett** . . . "Hey, Max! What's cookin'?" . . . she's an expert cuisiniere . . . keen spirit of fun; **Ruth Gardner** . . . Pleasantly loquacious . . . whimsical . . . people her hobby, friendliness her philosophy . . . logical thinker; **Virginia Graffam** . . . Gentillesse of an orchid . . . wistful . . . serene . . . it's nice to be natural, when you're naturally nice; **Carl Hanks** . . . "For he's a jolly, good fellow" . . . top-notch athlete . . . frank, fearless . . . irresistible personality; **Vivian L. Jones** . . .

1943



Talented musician . . . quicksilver moods . . . co-operative . . . diplomatic monitor . . . to everyone, "just plain 'Jonesey'"; **Mary Jane Keffer** . . . Modest . . . felt rather than heard . . . serenity . . . without guile . . . "e pluribus unum"; **Merrill Ladd** . . . "Strength of Gibraltar" . . . quiet good humor . . . he plays the "Shell" game . . . "Ad astra per ardua"; **Carol Maddox** . . . sweetly sincere . . . cool, deft hands . . . the piano her slave, musicianship her goal; **Winifred Maddox** . . . Conservatism . . . dignity . . . Yankee common sense . . . emotional tension . . . executive ability . . . effervescence of Bromo Seltzer; **Goldie Mills** . . . Petite . . . restive . . . resourceful . . . she gets a lot out of life by putting a lot into it; **Robert Nielson** . . . disarming smile . . . rugged . . . fun-loving, friendly . . . eyes on the horizon . . . "I Love Life"; **John Parry** . . . Sports enthusiast . . . dynamic . . . tenacious . . . E. N. C.'s "Puck" is made of sterling stuff; **William Restrict** . . . Dignity, seasoned with naivete . . . loyal . . . amicable . . . "The bookstore will not be open"; **George Rice** . . . "A merry heart doeth good like a medicine" . . . glowing conversationalist . . . "live-wire"; **Kathryn Schurman** . . . Dutch clock precision . . . conscientious, dependable, . . . Georgian courtesy . . . athletic Canadian . . . shades of "Miss

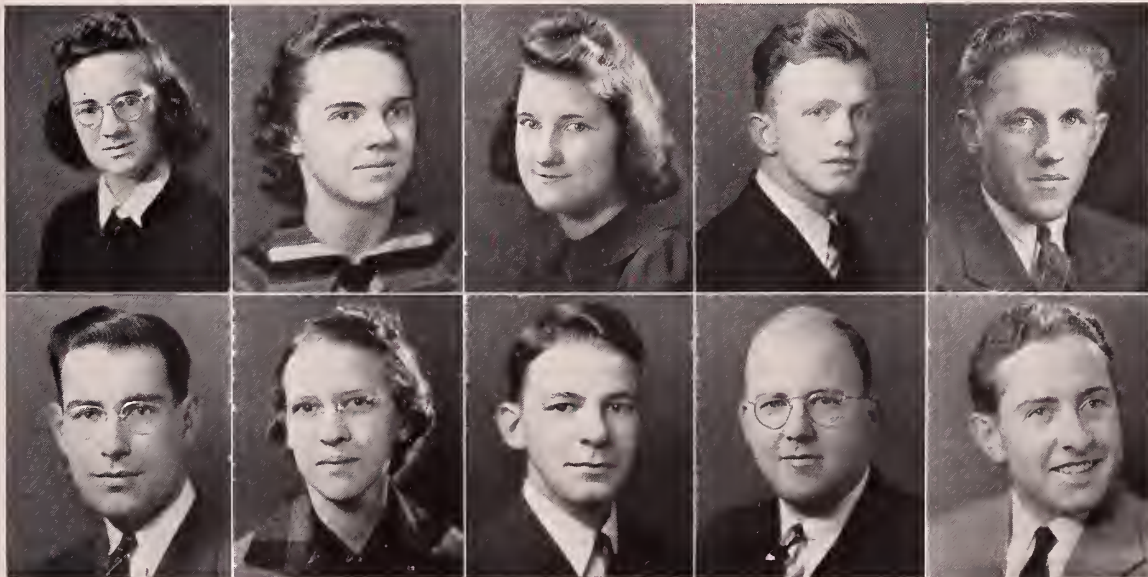
Vivian L. Jones  
Merrill Ladd

Carol Maddox  
Winifred Maddox

Goldie Mills  
Robert Nielson

John Parry  
William Restrict

George Rice  
Robert Shaffer





Kathryn Schurman  
Ruth Shirton

Dorothy Simonson  
Phyllis Traverse

Marjorie Whispel  
Garnet Wood

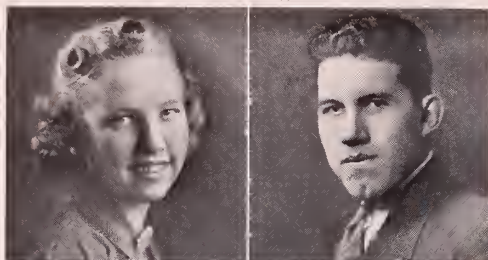
Jerry Woodcock  
Elizabeth Zimmerman

Dust"; **Robert Shaffer** . . . Our F. P. A. . . . urbane . . . appreciation of symphony and syncopation . . . intellectual curiosity . . . familiar essayist; **Ruth Shirton** . . . Affectionate as a little bear . . . never out of temper . . . quiet? well, sometimes; **Dorothy Simonson** . . . Vivacious . . . impressionable . . . modest simplicity . . . she inspires thoughts of flowers and butterflies; **Charlotte Snowden** . . . Her voice is liquid music . . . gentle refinement of magnolia blossoms . . . quiet cheerfulness; **Oscar Stockwell** . . . Conservative . . . diligent student . . . quiet demeanor covers a keen sense of humor . . . faith in God; **Phyllis Traverse** . . . Reserved as a violet . . . demure yet sophisticated as an English horsewoman; **Marjorie Whispel** . . . The perfect secretary . . . reliable . . . efficient . . . ability to accomplish . . . builder for eternity; **Franklyn Wise** . . . Perpetual optimism . . . easy-going joviality . . . individualistic ideas . . . matter-of-fact tranquility; **Garnet Wood** . . . Patrician dignity . . . independence of spirit, frankness of utterance . . . subtle fire of garnet; **Jerry Woodcock** . . . Unostentatious . . . constant as granite . . . industry and courage derived from purposeful living; **Elizabeth Zimmerman** . . . Sunshine and babbling brooks . . . energetic . . . "neat" . . . "Zimmy" has "what it takes."

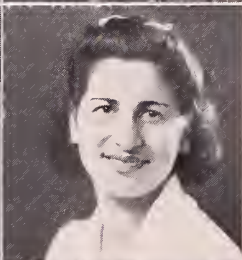
1943



# Sophomores



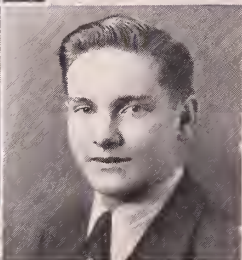
RUTH ANDERSON



WILLIAM COLE



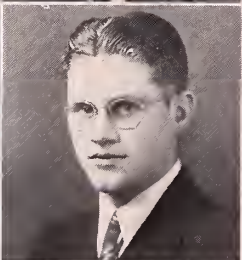
CARRIE BARTLETT



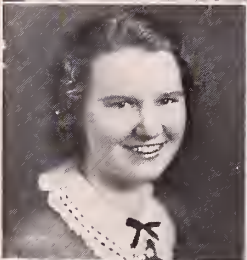
CATHERINE DE CASSIO



EVELYN BROWN



GEORGE DELP



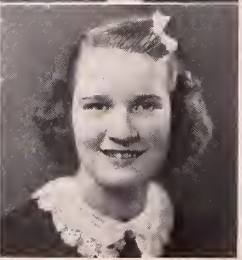
HELEN CASSIDY



DALE DU VALL



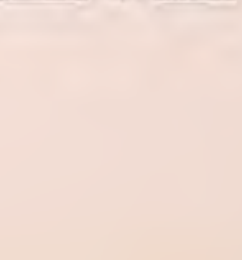
LUCILE CHATFIELD



PAUL EBY



RUTH CLARK



LOIS EMERY

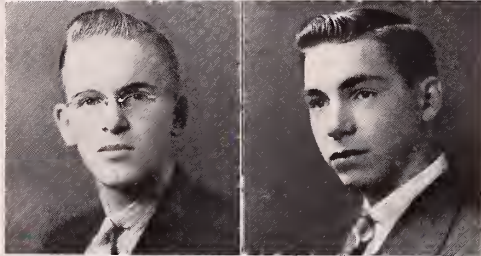
MARQUIS FLOWERS

IRMA KOFFEL



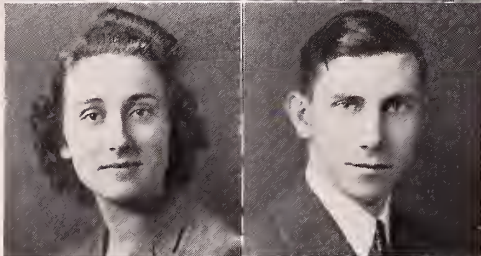
DONALD FREESE

CEDRIC MARTIN



GWENDOLA HAINES

ALFRED MASON



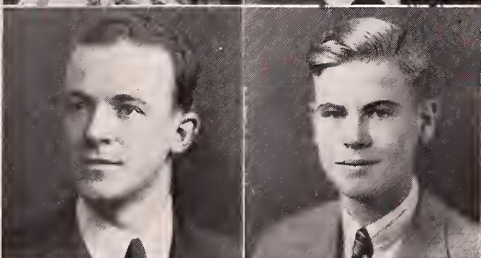
EVELYN HEINLEIN

GOLDEN MAY



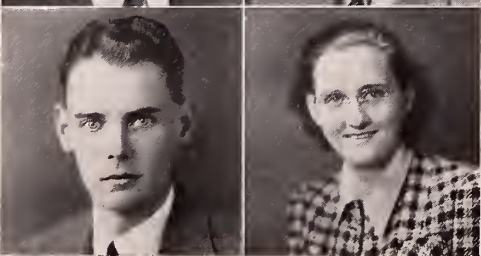
IRVING JONES

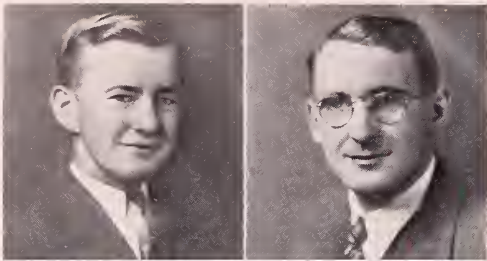
ROBERT MAYBURY



GLADWYN KARKER

JESSIE McCULLOUGH





VERNON MULLEN



VIRGINIA OLDHAM



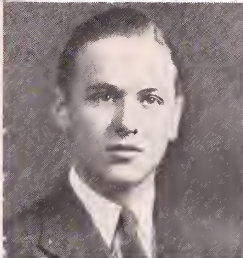
RALPH SABINE



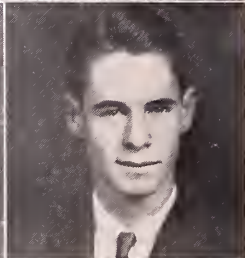
MARION PHILLIPS



RONALD SABINE



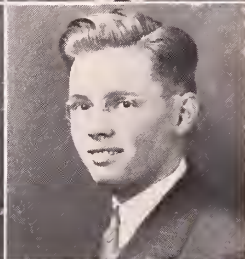
DALE POWELL



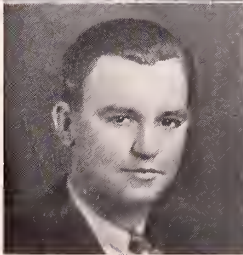
JOHN SHIELDS



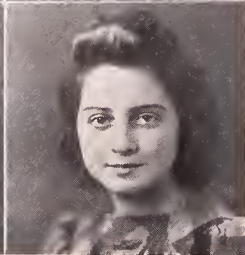
ALLEN RICHARDSON



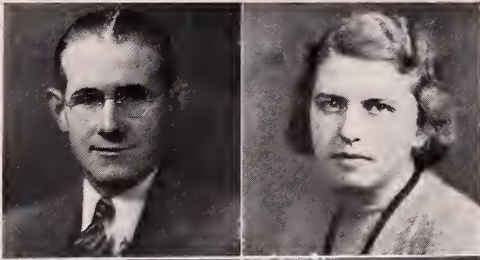
ROLAND STANFORD



KENNETH ROBINSON



IRMA STICKLE



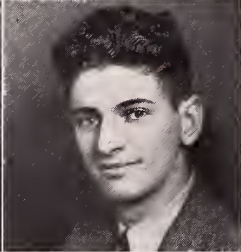
KENNETH SULLIVAN



MARGERY TWINING



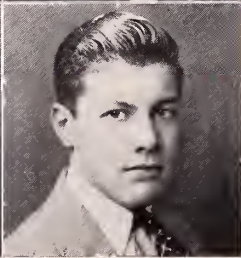
WILLIAM SUMMERSCALES



ALEXANDER WACHTEL



DONALD THOMAS



SPENCER WELLER

NOT PHOTOGRAPHED

Alexander Cubie

C. Weston Jones

Vesy Stemm

Maynard Parker

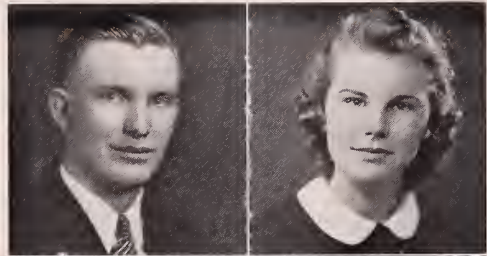




# Freshmen

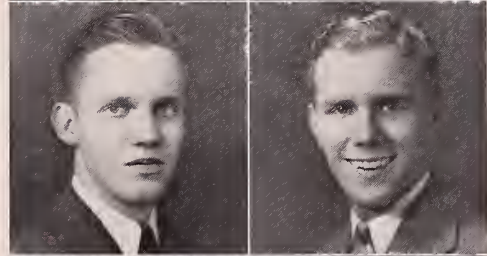
JOHN ANDREWS

RUTH BINGLER



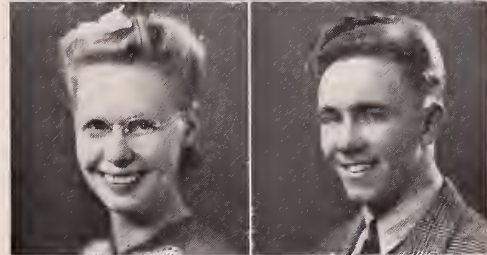
PAUL ANDREWS

WESLEY BLACHLY



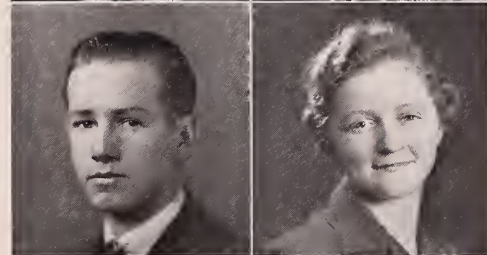
ORMA BABCOCK

ROBERT BRENNER



EDWIN BANHAM

HELEN BRICKLEY



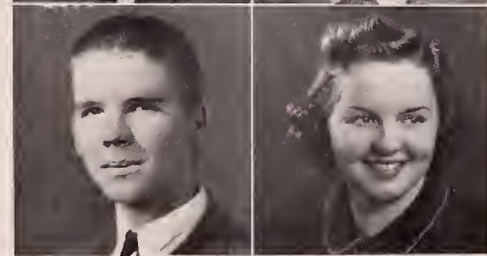
WILLIAM BARTLETT

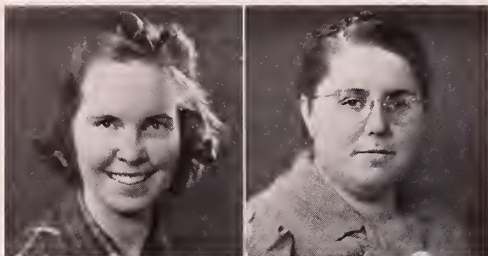
LOUISE BROWN



RICHARD BECK

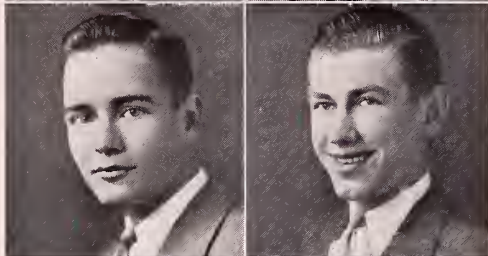
MARGERY BROWN





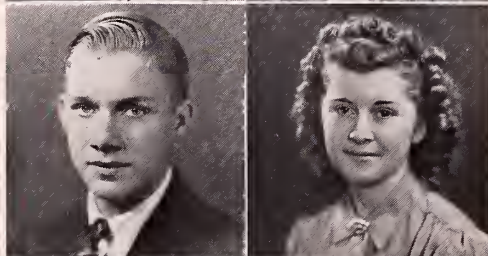
DOROTHY BRYNER

MARY COFFIN



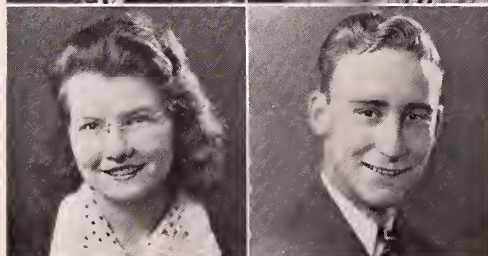
JOHN CARTER

FRANCIS COOK



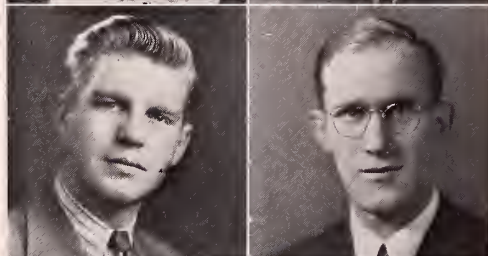
CLIFFORD CHURCH

MARGUERITE CORRIE



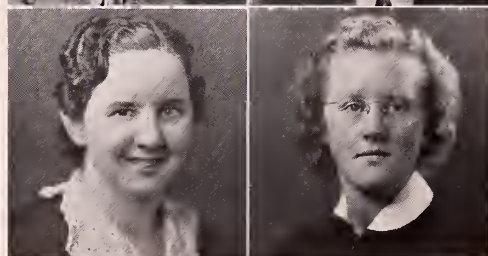
DOROTHY CLARK

LOWELL CRUTCHER



ROBERT CLIFFORD

RALPH CUSHING



MAUDE COCHRAN

MYRA DEGRAFF

EDWARD DELL

RALPH FLAUGHER

J. C. DIXON

ISABELLE GARDNER

VIOLA DOVERSPIKE

ALICE GEORGE

WILLIAM ECKMEYER

MERLE GRAY

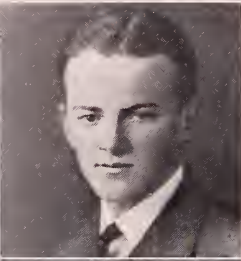
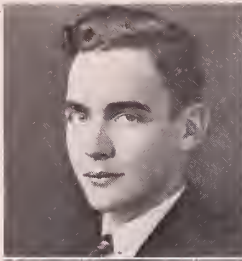
ROBERT EMMEL

BERYL GRANGER

ELIZABETH ENNIS

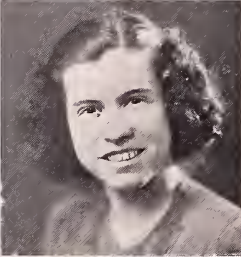
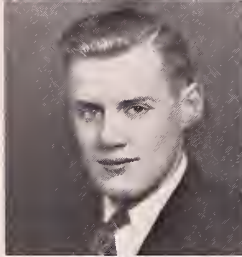
ROBERT HAMMAR





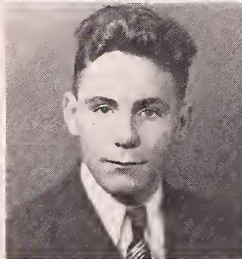
CARL HARR

HAROLD JONES



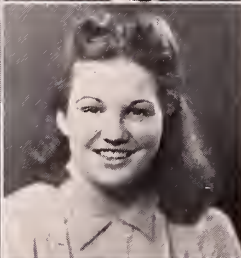
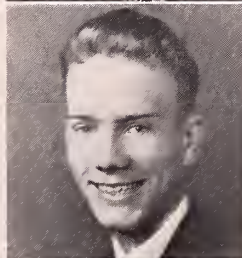
RICHARD HAWK

VIVIAN NAOMI JONES



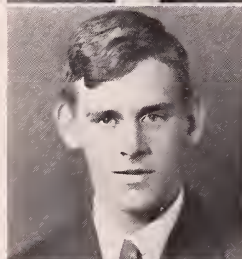
FRED HAYNES

VERNON JORDAN



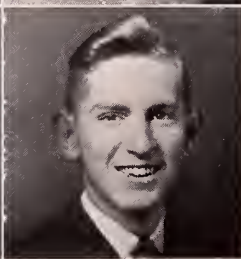
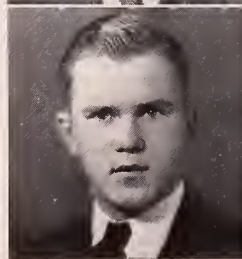
ALLAN HEDBERG

HELEN JORDICK



ALTON HIGGINS

DORIS JOUDREY



NORMAN HILLIKER

ELMER KAUFFMAN

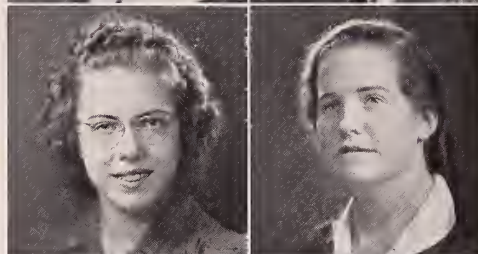
ANNA MAE KEFFER

WILLIAM MacKAY



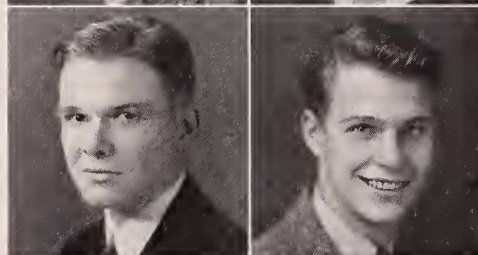
VANETTA KERLING

LENORE MALLORY



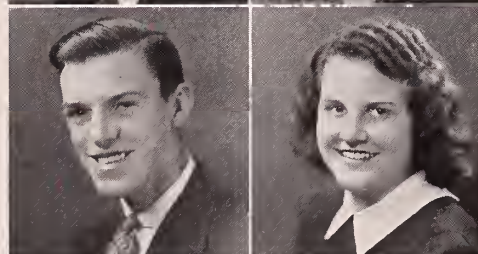
JAMES KING

JACK MAYBURY



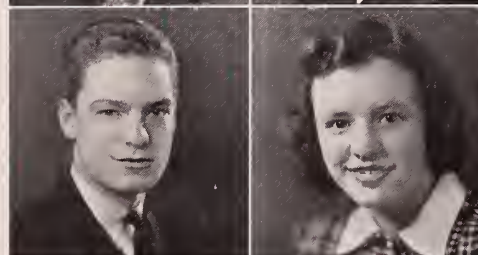
ROBERT LAWRENCE

NORMA McEDWARD



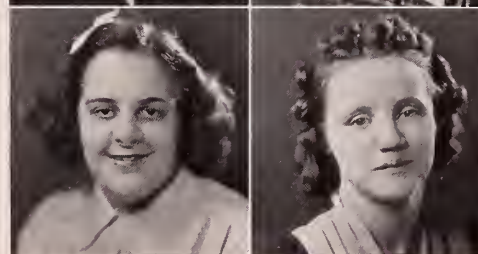
STEPHEN LIND

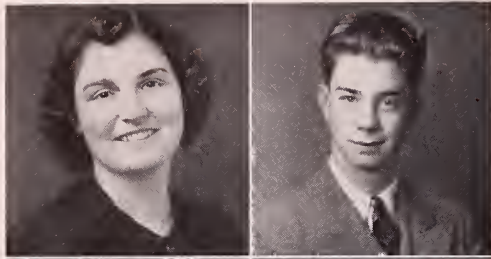
KATHRYN McKINNEY



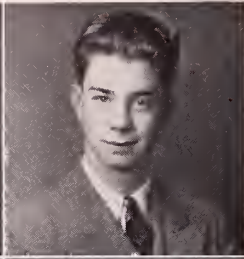
RUTH MacDONALD

INA MOORE

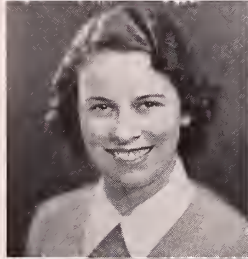




LOUISE SHOFF



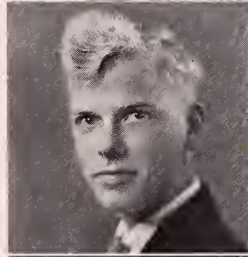
RICHARD STUMPF



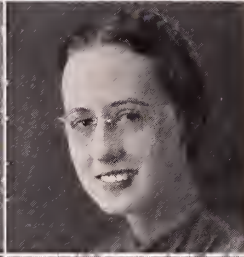
RUTH SICKLER



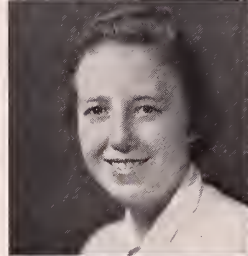
WANDA SUTHERIN



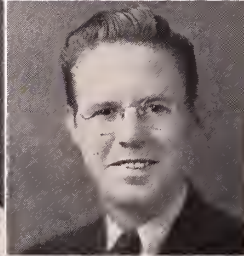
ERNEST SMITH



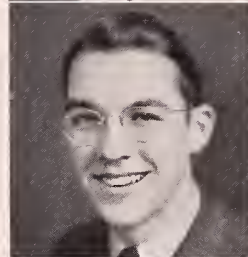
CASSANDRA SWINHOE



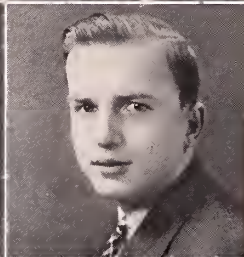
MIRIAM SMITHCORS



EDWARD THOMAS



DAVID SPARKS



ROBERT TIMM



BARBARA STETSON



LORETTA WARMKESSEL

GETRUDE NEWBERT

JANICE PERRY

EVELYN OLCOTT

HORACE POWELL

ASTRID PARK

ROBERT SAWYER

ELLEN PARK

MARION SCHICK

DANA PAYNE

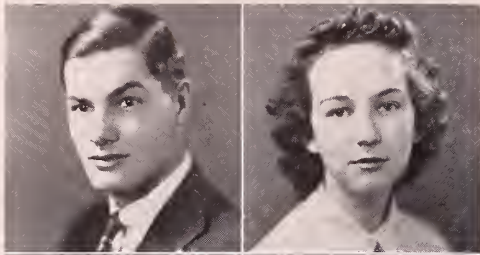
LUCILLE SCHULER

KENNETH PEARSALL

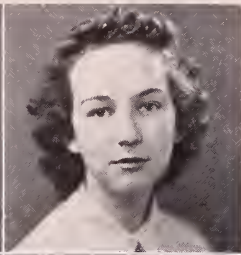
WAYNE SCOTT



*Do the  
 best you made the  
 C. direction the  
 most enjoyable  
 class has.*



CLIFFORD WELLER



LOIS WRIGHT



IRENE WILLWERTH



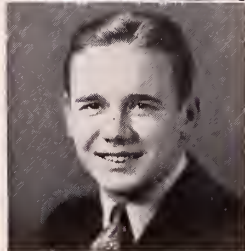
RACHEL YERXA



AUSTIN WRIGHT



EDITH ZIMMERMAN



MARVIN ZIMMERMAN

NOT PHOTOGRAPHED

- Harvey Amos
- Marie Austin
- Clarence Bish
- Robert Coghill
- Hilda Bowen
- Beatrice Chatto
- DeWitt Dickson
- Leonard Harding
- Norman Jordan
- William Lutton
- Kenneth Pierce
- Irene Plant
- John Sloane
- Victor Storms
- Gene White
- Kathleen White
- Everett Wild
- Charles Williamson







*Second Row: Slocum, Carpenter, F. Collins, Nelson, W. Ardrey, Erwin, Fisher, Klein  
Front Row: Kirby, Miss Rittenburg, Miss Mullen, Mr. Rankin, O. Smith, Reynolds*

## *Academy*

The Academy presents an avenue to the College for students deprived of an opportunity to complete regular high-school training. Along this avenue have passed many who had felt that to them the college doors were closed. Now they have received their degree and gone on to advanced study, teaching, and the ministry.

Educationally, the Academy is to the College what the Sunday School is to the Church, a preparatory station. Spiritually, the Academy co-operates with the College in work and prayer for the moral and spiritual growth of the student body, the community, and ultimately the world at large.

College students have displayed splendid feeling in their acceptance of academy students in sports and extra-curricular activities. An academy sophomore plays basketball or serves on a committee beside a college junior, with no sense of class distinction.

Though keeping its individual identity through its Monday evening prayer meetings and through social functions, the Academy never loses its consciousness of being a part of E. N. C.

Otis Smith, president; Dorothy Kirby, vice-president; Ruth Reynolds, secretary-treasurer; Carlton Gleason, chaplain.

# ACTIVITIES



*"When through fiery trials thy pathway shall lie,  
My grace all sufficient  
shall be thy supply."*



The Student Council stands as a middle term between students and administration, making possible a more efficient system of procedure.

Each member of the Council is vitally interested in student problems and concentrates both time and ability to solve them. Under the aggressive leadership of its president, Arnold Woodcook, the Council has formulated a revised constitution for student government.

To every campaign which benefits the students, the representatives lend an active support. Heretofore, frequent small collections have been taken up during the year as minor needs arise. For taking care of these often inconvenient demands the Student Council has instituted a small fee payable on Registration Day.

E. N. C. students are preparing for active citizenship by maintaining a democracy on the campus. The Student Council is the visible government. Those whom it represents are here learning the unwritten laws of personal liberty, are practicing Christ's injunction to love one's neighbor as himself.

## *Student Council*

*Second Row: Shrader, Gleason, Restrick, I. Jones, W. Jones, Calhoun  
Front Row: Prof. Earle, A. Woodcook, A. M. Shoff, Sickler*





*Fourth Row: Howard, Flaughter, Clifford, Benson, Stockwell, Dell, Nelson, J. C. Dixon, Carpenter, Shields, Harr, Lutton, Ekmeyer Pfaultz*  
*Third Row: Shirton, E. Brown, Booth, Muxworthy, I. Coghill, Chatto, A. Park, George, Bingler, A. Hedburg, W. Bartlett, R. Coghill, Bish, Hawk, Scott, Haynes*  
*Second Row: R. M. Salvia, Traverse, Boggs, DeGraff, M. Hedburg, A. J. Kauffman, Schlosser, C. Bartlett, Terry, Coffin, Adsit, Fawcett, M. Brown, Cornell, Kinney, Sawyer*  
*Front Row: Clemans, L. Brown, Chatsfield, Doverspike, M. Zimmerman, L. McKinney, Friend, Professor Groves, Summerscales, Oldham, Simonson, Restrick, Richardson, Wild, J. Woodcock*

## Sigma Delta Alpha

The Alpha crew, although missing several shipmates of 1941, staunchly determined to improve their ranks this year.

Election results found William Summerscales as Captain, with Ruth Friend, Dorothy Simonson, Laura McKinney, Della Boggs, Marvin Zimmerman, and Professor Groves as other officers.

Rush Day—Early in the morning the white sails of a purple boat were bidding newcomers to enlist with the Alphas. After final count, they were second to the Betas by only a slight margin.

Spooks, corn stalks, and old denims created the Halloween atmosphere in the gymnasium the night of the Alpha party. We recaptured the freedom we once knew—freedom to duck for apples, roll in the straw, or be “just kids” again.

Running through even the lighter moments of Alpha social activities is a sincere purpose to serve E. N. C. first, to foster a wholesome spirit of competition and opportunities for individual development. Alphas still intend to sail on upstream.

**Sigma Delta—wisdom; righteousness**

"If you want to **be** something, Be Beta," was the slogan that encouraged freshmen to flock to the ruby and gray wigwam on Rush Day. Enthusiasm and previous accomplishments gained for Sigma Delta Beta more new members than any other of the three non-secret societies which embrace E. N. C.'s entire student body.

The faculty saw themselves as others see them when Betas presented "The Kaleidoscope," a laugh-provoking characterization of professors in typical classes and chapel.

Diligence achieved for the Betas the Student-Get-Student trophy, now a permanent possession after being won for three successive years. They were also victorious in the **Herald of Holiness** campaign conducted last fall.

Dale Powell, president; George Rice, vice-president; Marion Phillips, secretary; Norman Collins, treasurer; Irving Jones, chaplain.

*Fifth Row: Beck*

*Fourth Row: Strathern, Gleason, W. Cole, Hetrick, S. Cole, Higgins, Martin, R. Lewis, Sullivan, A. Ardrey, V. Mullen, E. Smith, Cushing, Dickson, D. Thomas*

*Third Row: Slocum, Davis, E. Thomas, Sparks, W. Maddox, D. Brickley, A. Woodcock, DuVall, Eby, Church, Storms, Shrader, Mac Kay, Hammar, N. Collins, Wachtel*

*Second Row: R. Gardner, Reynolds, Taylor, F. Collins, C. Maddox, M. Payne, V. L. Jones, Willwerth, McEdward, McCullough, D. Payne, Jenkinson, Steele, Olcott, E. Park, Whispel*

*Front Row: DeCassio, H. Brickley, Corrie, Cochran, Horne, Stetson, Perry, D. Powell, Professor Mann, Rice, I. Jones, French, Eltheridge, Kerling, Colcord*



# Sigma Delta Beta



Fourth Row: Freese, J. Maybury, Emmel, W. Scott, Carter, Hanks, E. Kauffman, Calhoun, Shaffer  
 Third Row: R. Maybury, Delp, Stumpf, Brenner, O. Smith, G. Malony, Mingledorff, Robinson, Gray, W. Mullen, Ralph Sabine, Ronald Sabine, Blachly, King, Maynard Parker, Amos  
 Second Row: Schuler, M. Smith, Warmkessel, V. N. Jones, Bryner, Caldwell, Koffel, Clark, M. J. Keffer, Wood, Mills, Heinlein, Moore, M. Malony, I. Gardner, Cassidy, Granger, Schurman  
 Front Row: Slickle, Sickler, R. Emery, Sultherin, E. Zimmerman, Douglas, Nielson, L. Emery, Dr. Harper, Gould, B. Zimmerman, Ennis, Anderson, A. M. Keffer, A. M. Shoff, Shick

## Sigma Delta Gamma

In September bewildered freshmen were overwhelmed by signs, speeches, entertainment (including the Gamma's presentation of **Maud Muller**—apologies to Whittier), and evidently about one-third of the new arrivals were convinced that **Go Gamma** was the slogan to be followed.

In October the Gamma Blue and Gold won the football championship. The girls later completed their second undefeated basketball season, aided by the antics of Sickler, Koffel, Emmel, and Robinson, Gamma cheer leaders.

November brought the Gamma's Friday evening program, "The Span of Life." Little George Harper, borrowed for the occasion, "stole the show" by making faces at the spotlight.

The society climaxed the year by joining with Alphas and Betas to present May Day, a custom started last spring by the Gammas.

Winnifred Gould, president; Lois Emery, vice-president; Betty Zimmerman, secretary; Robert Nielson, treasurer.

**Sigma Delta—spirit of E. N. C.**



## House Councils

Dormitory life at E. N. C. will never be forgotten. The good humor of practical jokes and unnumbered conclaves have often eased the strain of a full work-study week. Men's and women's house councils have been organized as a student means of fostering order in the dormitories. They function also in presenting various petitions to the Student Council and to the administration.

The Men's Council, representing the three dormitories, was officially organized for the first time this year with Lee Powell as leader. The Women's Council, an older organization, is this year headed by Betty Zimmerman. Both councils have arranged for lively parties and have sponsored projects—witness new furniture in the girls' parlor—to make dormitory life more pleasant.

All this is a further development of E. N. C.'s democratic life. Even the dormitories can offer an opportunity to practice our belief in Christian liberty and respect.

*Second Row: Fawcett, W. Jones, Boggs, Mingledorf, Chesbrough, V. L. Jones  
Front Row: Wood, Pearsall, B. Zimmerman, L. Powell, Anderson*





*Third Row: Whispel, Delp, R. Maybury, Howard, Calhoun, Shaffer  
 Second Row: Traverse, Adsit, Graffam, Boggs, B. Zimmerman, Phillips, L. Emery  
 Front Row: W. Mullen, M. Payne, Shrader, A. J. Kauffman, Friend, R. Emery*

## *Honor Society*

"Let ignorance talk as it will," maintain Honor Society members, "learning has its value." And it is for the purpose of stimulating recognition of this value that the Honor Society exists. Perhaps we might say of the honor students that they have learned the lessons of persistence and resistance.

Grade cards have a special significance to any aspiring to be members of the organization. B+ must be the semester average, with no grade below B—. Members are chosen at each Commencement for the following year. The 1941-42 society, largest in the history of the school, is headed by Betty Zimmerman, president; Marion Phillips, vice-president; Lois Emery, secretary; Carl Crouthamel, treasurer.

Its members have come to appreciate the inner wealth that study brings; they have discovered the far-reaching value of true scholastic attainment; and best of all, they look to Christ as the greatest Teacher.

The organization is affiliated with Phi Delta Lambda, national Nazarene Honor Society.

"Lord, we are able, our spirits are Thine;  
Remold them, make us, like thee, divine.

## Evangelistic Association

It may be here in Sunday school or at a negro church in Haymarket Square that you will hear this theme song of the Evangelistic Association, a society of ninety-five students which has given to the Christian youth of Eastern Nazarene College the opportunity to preach, sing, and testify. Besides regular weekly services in the missions in Boston, you will find them serving at the Quincy City Hospital or a Swedish Congregational Church, or distributing gospel tracts in the community. Representing active service for Christ, the Evangelistic Association is thus a vital impetus in the spiritual life of the college.

President, Donald Thomas; Vice-President, George Delp; Secretary, Beryl Granger; Treasurer, Donald Freese.

*Fifth Row: N. Collins, W. Bartlett, Sparks, W. Cole, Gleason, Dickson, Hetrick, S. Cole, Ronald Sabine, Beck, Carpenter*  
*Fourth Row: Terry, Flaughner, O. Smith, R. Maybury, J. Maybury, Emmel, Slocum, Gray, Ralph Sabine, Dell, Church, R. Coghill, Amos, King, Sawyer, Maynard Parker*  
*Third Row: Muxworthy, Cornell, Schlosser, Chatfield, Corrie, H. Brickley, Granger, Schuler, E. Brown, Olcott, Reynolds, Boggs, Blachly, Rice, I. Jones, Stockwell, Wild, Richardson*  
*Second Row: C. Bartlett, F. Collins, Booth, M. Smith, I. Coghill, Willwerth, W. Maddox, L. McKinney, M. Hedburg, M. Payne, Koffel, D. Payne, V. N. Jones, Taylor, C. Maddox, A. Park, Wachtel*  
*Front Row: Shirton, E. Park, Kerling, A. J. Kaufman, M. Brown, Delp, Freese, Professor Shields, D. Thomas, Caldwell, A. M. Keffer, Schurman, M. Malony, Whispel, Moore*





*Second Row: Parry, Ralph Sabine, I. Jones, Summerscales, Restrick, Hanks, Calhoun  
Front Row: Benson, Mingleдорff, A. Woodcock, Hetrick, D. Brickley, G. Dixon*

## *Student Ministerial Association*

The Student Ministerial Association exists for the purpose of keeping to the fore the fundamental issues in preparation for the ministry.

Because of the vital importance to the Christian system of wise leadership, the responsibility of adequate preparation must be conscientiously assumed by everyone entering the ministry. The Association, under the leadership of Earl Scott, president, and Oscar Stockwell, vice-president, has tried to inculcate in its aims the practical element of actual preaching experience. Although the organization has not itself sponsored a preaching program, the members have found sufficient opportunity for expression through the Evangelistic Association and through student pastorates.

During the latter part of the year, senior members revealed their native ability and acquired training by preaching in the Wollaston Nazarene Church. According to response of the local congregation, the plan, initiated by Rev. Samuel Young, pastor and adviser of the ministerial group, resulted profitably for both the church and the participating students.

Because it has a dynamic concern that all the world should have the full gospel of Christ, the College Missionary Society has maintained an active program during 1941-42. With a membership of two hundred twenty-five, including both faculty and students, the Society, led by C. Weston Jones, president, is one of E. N. C.'s largest organizations.

A glimpse into war-time China—the courage of the missionaries, the ingenuity and endurance of the Chinese Christians, the barriers which must be overcome if every Chinese village is to have the gospel—this picture was made vivid by Geoffrey Royal, Nazarene missionary on furlough.

Through the courtesy of the American Leper Society students saw an authentic film on the healing of an African leper boy, portraying normal, happy life in a leper village.

In exchange programs, the missionary society of Gordon College, Boston sent a group to present missions in testimony and music at an E. N. C. chapel period, and the local organization gave a similar program at Gordon.

## College Missionary Society

*Second Row: Koffel, Boggs, Payne  
Front Row: W. Jones, Prof. Earle, Summerscales*





*Third Row: A. J. Kauffman, Jenkinson, Delp, Freese, Calhoun, L. Brown, DeCassio  
 Second Row: Stickle, Miss Rittenburg, Church, L. Emery, Sickler, Gould, Anderson, Adsit, V. L. Jones  
 Front Row: B. Zimmerman, Shaffer, Professor Munro, Phillips, Professor Spangenberg, R. Emery, Graffam*

## *Literary Club*

Because "a little learning is a dangerous thing," the Literary Club members make their monthly pilgrimage close to the "Pierian Spring."

A word of prayer, a bit of business, and we're off to drink deep from the sacred wells of literature.

During the past months, we have discovered which authors are favorites with the club and what the club as a unit prefers in both prose and poetry.

At one meeting, we busied ourselves with a Round Robin letter to our honorary vice-president, Robert Shaffer, who is in the signal corps of the United States Army.

Looking beyond its own interests to those of all the students, the Literary Club presented a Friday night program of literature and music, the message of which held a challenge especially appropriate to the present crisis.

President, Marion Phillips; Vice-President, Robert Shaffer; Secretary, Rachel Emery.

The Historical Society, a departmental organization with the specific purpose of fostering interest in history, has nevertheless reached out in its activities to include the entire college as its benefactor.

A public program presenting Dr. Warren D. Ault, supervisor of the history department at Boston University, was the opening activity in September. His enlightening, but no less entertaining, lecture on "Oxford, Past and Present" helped in strengthening E. N. C.'s bond of friendship with our British allies.

An all-day trip to famed spots near Boston, open to all students but sponsored by the Historical Society, created interest in the history of our own section. Lexington, Concord, and Bunker Hill recalled the courageous spirit of our forefathers.

At monthly meetings, enlivened by the leadership of the adviser, Professor Lunn, members sharpened their wits in timely discussions of the economic conditions of the United States or our relationship with Australia.

President, Goldie Mills; Vice-President, Earl Scott; Secretary, Maxine Fawcett; Treasurer, Harold Jones.

## Historical Society

*Third Row: Heinlein, Haynes*

*Second Row: Robinson, Mac Kay, Harr, H. Jones, Bingler, P. Andrews, E. Thomas, Joudrey*

*Front Row: W. Maddox, I. Jones, Mr. Rankin, Mills, Fawcett, M. Hedburg, Clark*





*Second Row: Dr. Shrader, Lawrence, Shields, Hedburg, Prof. Babeock, Karker, Chatto  
Front Row: Colcord, Young, C. Maddox, J. C. Dixon, Rice, R. Maybury, E. Park, McEdward, George, N. Collins, L. Powell*

## Science Club

The scientists-to-be of Eastern Nazarene College last fall elected Stephen Lind for their president, with John Young in the vice-president's chair, Virginia Oldham as secretary, and Richard Hawk as treasurer.

Science Club meetings have featured enlightening discussions on "The Electron Microscope"—it's really very simple; "Sulphur Drugs"—an invaluable aid in the healing of war casualties; and "Analysis of a Musical Tone." Reels of film covered such topics as "Alcohol vs. the Human Body" and "The Inside Story of a Fish Hatchery."

When circumstances forced the resignation of three of the officers second semester, new officers were chosen as follows: John Young, president; Norman Collins, vice-president; Carolyn Colcord, secretary; and George Rice, treasurer.

St. Patrick's Day found us eating a full-course fish dinner in the Blue Ship restaurant on Boston's T-wharf.

Our Friday night presentation used each member as either experimenter or victim in an original program of general education incorporated with fun.



"Organized to solve all the problems of the universe," was the Philosophical Society president's witty suggestion as to our objective of the year. A satisfied attempt is our only boast.

Though our investigations may just have touched the fringe of philosophical problems, we feel pleasure in having tried. In our meetings we have meandered from the non-existent phenomenon of space and the elusive tangibility of matter to the practical aspects of living and of whether we should be idealistic or pragmatic in our outlook.

With truth not conditional and basic assumptions not groundless, we are confident that unbiased, independent minds can still hold fundamental truth. Our results may not be tangible, yet they are valuable in that they have given us a greater trust in the meaningfulness of life.

In accordance with our constitution two books were donated to the college library. These were selected under the direction of the president, Wilbur Mullen; vice-president, Alexander Wachtel; secretary, Jean Shrader; treasurer, Oscar Stockwell.

## Philosophical Society

*Third Row: Sullivan, Minglehoff, Dickson, V. Mullen  
Second Row: Koffel, Nielson, A. Woodcook, S. Cole, Ronald Sabine, Ralph Sabine, Stockwell  
Front Row: Shrader, Wachtel, Dr. Harper, W. Mullen, Howard, G. Dixon*





*Third Row: Granger, Hanks, Maynard Parker, Pearsall, Summerscales, Richardson, Twining, Cassidy  
 Second Row: Stetson, Schurman, M. Brown, R. Gardner, Friend, E. Brown, Chatfield, Traverse, E. Zimmerman, Perry  
 Front Row: Chesbrough, A. M. Shoff, R. M. Salvia, Professor Shields, Mason, Shirton, Wood*

## *Psychology Club*

The Psychology Club, spurred on by President William Restrick, is making its contribution to E. N. C

Proceeds of a psychological clinic, showing the development of children from the age of one to six, went into the psychology department's fund for experimental equipment. Such instruments as the chronoscope for testing time reaction and the olfactometer for indexing smell will be an important factor in the experimental psychology course to be instituted next year.

A revealing resume of the psychology of Helen Keller and the entertaining hypnotism of Bill Restrick by the club's adviser, Professor Shields, illustrate the refreshing variety of this year's meetings. An afternoon's trip to the Danver's institute for the insane provided practical observation of the mentally abnormal.

Plans are formulated to send six members to the inter-collegiate psychology meet at the University of New Hampshire.

Vice-president, Kenneth Pearsall; secretary, Rose Marie Salvia; treasurer, Alfred Mason.

## Speech Club

The demands for speech in the life of a student are many and varied. Some of the situations are comparatively inconsequential. Occasionally, however, the demand for self-expression is significant, and unfortunately, the average student is inadequate for the situation. Then, wryly with Thackeray, "On the day of the dinner of the Oystermonger's Company, what a noble speech I thought of in the cab, going home."

The Speech Club, youngest of the departmental societies, was organized by students who recognized the value of speech training. They felt that the club could provide a means for discussion, interpretative work, and demonstrations for which there would be no time in the classroom. Already in its brief history the club has had two outstanding programs; one, a study and interpretation of **The Merchant of Venice**; the other, a practical demonstration of "life situations."

Supported by the college and friends, the Speech Club sponsored purchase of a recording machine, a significant step of progress for fine arts departments.

President, Jessie McCullough; secretary-treasurer, Gwendola Haines.

*Second Row: M. Malony, Timm, G. Malony, I. Jones, D. Brickley, French  
Front Row: Robinson, McCullough, Mrs. G. B. Williamson, Miss Dygowski*





*Third Row: Haynes, Anderson, N. Collins, Nielson, Twining  
 Second Row: V. Mullen, M. Brown, Mac Kay, L. Emery, Delp, Traverse, Shaffer  
 Front Row: Shields, Mason, Professor Spangenberg, Calhoun, Rice, Dell*

## *Campus Camera*

As much a part of E. N. C. life as mid-semester examinations, the **Campus Camera**, official student newspaper, has this year increased its appeal by the strengthening of its news content and addition of new features.

The recently inaugurated **Capital to Campus** column captures attention with its reports of war news which especially affects college students. **Thru the Lens**, with informal campus news and opinions, appears regularly, and **It's All in Sport** reviews with genial criticism E. N. C.'s athletic activities. Lois Emery's column, **Our Spiritual Side**, reveals a deeper aspect of campus life.

The Associated Collegiate Press has awarded the **Campus Camera** second class honor rating.

Lyal Calhoun, editor-in-chief; George Rice, assistant editor and news editor; Lois Emery, columnist; Robert Maybury, Ruth Anderson, Vernon Mullen, Margery Twining, Roland Stanford, reporters; John Shields, sports editor; Robert Nielson, Fred Haynes, William MacKay, sports reporters; Marguerite Corrie, secretary; Alfred Mason, business manager; Norman Collins, assistant business manager; Alice George, Lucille Schuler, circulating staff; Professor Alice Spangenberg, faculty adviser.

# Greenbook

"By the way, have you written your theme for tomorrow yet?"

"No, I scarcely have any idea for one."

Thus goes the conversation between two enthusiastic freshmen every Tuesday night at approximately 10:45. It sounds neither inspired nor particularly industrious, but from those potential themes that, in spite of discouraging anticipations, actually do materialize, comes the basis of E. N. C.'s freshman literary publication, the **Greenbook**.

Supplemented with snapshots, novel features, and witticisms, carefully selected themes are an index to the personality of the freshman class. Since students come from many sections of the United States and from Canada, the book is alive with the literary expression of varied backgrounds and ideas.

This year's editors, New Englander Vernon Jordan and New Yorker Dana Payne, have chosen to unify the **Greenbook** by an early American theme, weaving through the experiences of E. N. C. freshmen the pioneer spirit of their forefathers.

*Second Row: French, Mac Kay, Dell, Flaughter*

*Front Row: E. Park, J. Maybury, D. Payne, V. Jordan, Amos, L. Brown*





*Second Row: C. Maddox, Silverbrand, Richardson, E. Brown, Mrs. Marple, Mrs. G. B. Williamson, Colburn, Miss Rittenburg, R. Maybury, D. Brickley, Dickson, Professor Naylor, Mr. Rankin*  
*Front Row: E. Kauffman, L. Shoff, Carpenter, Church, Shirton, Scherneck, Nielson, Miss Ede, Gould*

## Orchestra

Almost invariably the first characteristic observed of the orchestra is the enthusiasm of its inspiring conductor, Mrs. G. B. Williamson.

Betty Kauffman, concertmaster, Louise Shoff, Clifford Church, and Ray Carpenter constitute the first violin section, with Carol Maddox, Allen Richardson, and Mr. Edmund Silverbrand, E. N. C. alumnus from Saugus, playing second violins. Senior Winnifred Gould and faculty member, Miss Ruth Ede, are the cellists. Evelyn Brown is behind the string bass.

Among the woodwinds are Mildred Scherneck and Robert Nielson, armed with clarinets.

Versatile Mr. Rankin plays trombone, tuba, or French horn. Professor Naylor explores the bass register with his trombone. Robert Maybury, Ellen Rittenburg, and Donald Brickley add the clear tones of the trumpet.

Mr. Colburn comes in from Wollaston to preside at the tympani, while Mrs. Marple adds background at the piano.

Weekly rehearsals are climaxed by semi-annual concerts. This May, Professor Edith Cove appears as guest soloist, playing with the orchestra a Mendelssohn piano concerto.

Strains of **A Mighty Fortress Is Our God**, or **Was Ah 'Fraid?**—Director Esther Williamson saying, “Altos alone, page six, second score,” or “Miss Romig, I think we need the help of the piano”—all this is overheard in the chapel from seven to eight every Monday and Thursday evening. A cappella choir is practicing.

## *A Cappella Choir*

Just before Christmas vacation the choir presented a concert attended by the students and by thirty-five soldiers from Fort Devens. The group is scheduled for its annual program on Thursday of Commencement week.

During Easter week groups from the thirty members furnished music for Palm Sunday services and a special Good Friday program.

This year the girls invested in white shirt-waists and black skirts, thus adding to the uniform appearance of the choir.

The cappella choir, with Carl Hanks as student manager, is eager to better its singing and increase its influence so that it may remain a real asset to E. N. C.

*Fourth Row: Carpenter, Church, Stanford, Blachly, D. Brickley  
Third Row: Ronald Sabine, Hanks, Spanks, Dell, J. Maybary, Amos, D. Thomas  
Second Row: Clark Bingle, L. Shoff, A. M. Keffer, Anderson, Miss Romig, Collins, Miss Ede  
Front Row: Jackson, Schurman, W. Maddox, Gould, Swinehoe, L. Mc Kinney, H. Brickley, Mrs. E. Williamson*





Third Row: Emmel, E. Kauffman, Robinson  
 Second Row: Douglas, Phillips, A. M. Keffer, W. Maddox, Gould, V. L. Jones  
 Front Row: D. Brickley, Prof. Mann, I. Jones, M. Payne, W. Mullen, R. Emery

# The Nautilus

- |                            |                                |
|----------------------------|--------------------------------|
| Muriel Payne . . . . .     | <b>Editor-in-Chief</b>         |
| Vivian L. Jones . . . . .  | <b>Associate Editor</b>        |
| Rachel Emery . . . . .     | <b>Literary Editors</b>        |
| Marion Phillips . . . . .  |                                |
| Wilbur Mullen . . . . .    | <b>Staff Writers</b>           |
| George Douglas . . . . .   |                                |
| George Delp . . . . .      |                                |
| Clifford Church . . . . .  |                                |
| John Shields . . . . .     | <b>Sports Editor</b>           |
| Professor Munro . . . . .  | <b>Literary Adviser</b>        |
| Elmer Kauffman . . . . .   | <b>Photographic Editor</b>     |
| Professor Mann . . . . .   | <b>Alumni Editor</b>           |
| Irving Jones . . . . .     | <b>Business Manager</b>        |
| Donald Brickley . . . . .  | <b>Assistant Business Mgr.</b> |
| Robert Emmel . . . . .     | <b>Advertising Mgr.</b>        |
| Kenneth Robinson . . . . . | <b>Assistant Adv. Mgr.</b>     |
| Dana Payne, . . . . .      | <b>Typists</b>                 |
| Winifred Maddox . . . . .  |                                |
| Anna Mae Keffer . . . . .  |                                |
| Winnifred Gould . . . . .  |                                |
| Professor Mann, . . . . .  | <b>Business Adviser</b>        |



# Who's Who

Eastern Nazarene College appears for the first time in the 1941-42 edition of **Who's Who Among Students in American Universities and Colleges**. Seven upperclassmen, chosen by a committee of faculty and students, represent the college. They have been selected for their character, scholarship, and leadership ability in athletics, society, religion, and student government, as well as potentialities for future success in the business and social world.

Following are brief summaries of the activities of each student chosen:

Lyal Calhoun—"Campus Camera" editor; Student Council; editor 1940 "Greenbook"; Male Chorus; Honor Society treasurer; A Cappella Choir; Gamma basketball, football, baseball; Honor Society scholarship, '41; Washington-Philadelphia district scholarship, '40.

Rachel Emery—Honor Society president, '41; "Nautilus" staff, '40-42; editor 1939 "Greenbook"; officer of Literary Club, senior class, House Council; salutatorian.

Douglas Fisk—postgraduate now employed in the Hercules Powder Company's laboratory; college quartet, '39-41; Male Chorus; "Nautilus" staff.

Ruth Friend—junior class president, '41; House Council president, '41; A Cappella Choir; Honor Society; Alpha basketball; "N" Club; officer of senior class, Sigma Delta Alpha.

Muriel Payne—"Nautilus" editor, '42; "Campus Camera" staff; 1939 "Greenbook" staff; House Council; officer of Honor Society, Music Club, League of Evangelical Students, Sigma Delta Beta, College Missionary Society; valedictorian.

Jean Shrader—Student Council; "Campus Camera" staff; "Nautilus" staff; A Cappella Choir; Honor Society; officer of Philosophical Society, Literary Club; trophy for excellence in discussion, '41.

Arnold Woodcock—Student Council president, '42; class chaplain, '39; vice-president of Young People's Society; Albany district scholarship, '39.

Woodcock

Payne

Fisk

Friend

Emery

Shrader  
Calhoun



# Alumni

**RICHARD SLOANE**  
President



The final story of any college is told by its Alumni.

Let a representative class, which graduated from Eastern Nazarene College only a few years ago, tell its own tale. Classmates who once studied psychology and literature together, and worked on the college newspaper, and marched down the aisle for the last time Commencement night are now as widely separated as California, New York, Florida, and Western Canada. Eleven ministers and ministers' wives are serving the church in Massachusetts, New York, Maryland, Pennsylvania, and Michigan. Teachers of piano are located in Connecticut, Massachusetts, and Canada. School teachers have positions in Massachusetts and Ohio. One civil service worker, a secretary, and two bookkeepers are employed in and near Boston, where a student nurse is also training. In Connecticut an alumnus is art director of an advertising agency. A housewife is in

California with her husband, himself an alumnus, who is taking graduate work. And also out on the Pacific coast the class's first man in the service, now an ensign, is instructor in a naval gunnery school. But these classmates have only begun to record their history.

Every year the graduating class writes a similar record. Statistics are impersonal. The bare assertion that former students are serving churches of nine denominations in twenty states and three Canadian provinces doesn't begin to estimate the dynamic of even one educated Christ-centered life. Missionaries in Peru, India, China, and Africa; public school teachers in twelve states; college instructors in nine institutions; civil and construction engineers, doctors, nurses, chemists, contractors, bank directors, business executives, statisticians. And on indefinitely one might go, listing the positions that graduates have found for themselves in the more active

life beyond the borders of their college campus.

Instruction received, a prayer answered, an ideal followed at E. N. C. are now bearing fruit in a sermon preached in southern Texas or far-off China; or in the quiet, righteous influence of a Christian librarian or journalist, or a seaman on a battleship in the Far East.

But E. N. C. Alumni may be considered in ways other than as members of so many professions—so many teachers, business men, ministers. E. N. C. Alumni, many of them, are Christian mothers and fathers who have founded Christian homes in thirty-five states

and in six foreign countries. As an expression of faith in their Alma Mater, many Alumni are planning to send their own boys and girls to the very college where they themselves once studied psychology and literature, not too many years ago. Already several members of E. N. C.'s second generation are enrolled.

Tribute is due the former students and graduates who in ever-increasing numbers are joining the nation's armed forces. For them enlistment is meaning a two-fold loyalty; loyalty to the ideals of the land of their birth; loyalty to the ideals of the college of their choice.

*Rev. John Riley, the Philip Tracys, Rev. and Mrs. Vergil Hoover, Rev. and Mrs. Earl Lee, the Martin Inscos, Rev. and Mrs. Ross Emerick, Rev. and Mrs. Frank Bowers, the Homer Smiths, Rev. John Nielson, Rev. and Mrs. Donald Strong, Rev. Shiro Kano*



# E. N. C. MARCH

EDITH F. COVE

1. Firm in old New Eng - land E. N. C. doth stand; Built by ma - ny la - b'ers But di - vine - ly planned.  
2. Clear on mem - 'ry's can - vas, Scenes that ne'er shall fade; Sto - ried halls and sunny lawns, Elms with friendly shade.  
3. Led by those who love us, Val - ued truths we see; Sure - ly we are "train - ing For E - ter - ni - ty."

Truth has been thy stand - ard, Youth to thee have turned; Thou hast nev - er failed them As thy ways they've learned.  
Thine not state - ly splen - dor, But thou giv - est free Wealth of love and beau - ty, Beau - ti - ful E. N. C.  
Dear, loved Al - ma Ma - ter, Much to thee we owe; May we nev - er fail thee As we on - ward go.

## CHORUS

E. N. C., dear E. N. C., School we love the best. Here and there, ev - 'ry - where, She will stand the test.

E. N. C., dear E. N. C., True to thee we'll be; One and all, we'll heed the call Of dear old E. N. C.

## CHRONICLES OF OVERCOMERS

"The flame shall not hurt thee; I only design thy dross to consume and thy gold to refine." Even as the literal fire of last May was changed from disaster into a means of progress, God has made real to Eastern Nazarene College the promise of betterment through trials, of overcoming through obstacles. Today over the world rages the devouring flame of war. It is an obstacle but not too great a one for E. N. C. She has learned the secret of the overcoming life: "In all these things we are more than conquerors through Jesus Christ who loved us."

In these pages are the chronicles of an E. N. C. year—1941-42. Serious moments are interspersed with light moments, the essential with the extra-curricular, but through all is the spirit of the Christian overcomer.

### The Genesis—Registration

September 9. The blue cards, endless waiting lines, conferring professors, puzzled "greenies," friendships being renewed, with three months of piled-up news to relate; these and all the other characteristics of Registration Day began a whirl which is to end only with Commencement in May. The faculty reception in the gymnasium that evening provided recreation and an opportunity to get acquainted—and the school year was on its way.

### Trial by Laughter

A stranger on the campus might wonder why for two bright September days about one-fourth of E. N. C.'s population looked as if they had stepped out of a **Wizard of Oz** book. Two words explain the phenomenon—freshman initiation.

Lovely freshmen maidens appeared for classes clad in inside-out frocks, Topsy pig-tails, shoes with unmatched heels, and placards prominently advertising that this, for instance, was Miss Cassandra Swinhoe (that's she with the delicate clothespin earrings). "Butch" Olcott added dark glasses and a guitar to achieve a Western air.



The boys paraded about with suitcases, resembling eccentric bell hops. Vernon Jordan's mustache gave him a touch of distinction, so thought Paul Andrews, the man with the oversized bow. Cautious Wayne Scott protected himself against September weather in his Eskimo coat.



### "I Choose . . ."

Rush Day followed initiation as naturally as water seeks its level. The freshmen had proved they could "take it;" now they were to choose one of the Sigma Deltas, E. N. C.'s three athletic-literary societies. Alphas enticed them with their securely anchored purple-and-white ship. Betas beckoned them to sign, as did Freida Collins in the picture, at a ruby-and-gray wigwam. Gammas won them at a blue-and-gold "Go Gamma" stand.

### Check for Progress

As a consummation of last summer's library and laboratory fund campaign, a caravan of enthusiastic E. N. C. supporters from the Pittsburg district arrived on campus to present President Williamson with a check for \$3,902.21, representing a quota over-subscribed by nearly a thousand dollars. Added to generous subscriptions from the other districts of the educational zone, the contribution made possible hundreds of new

reference books for the college library and a variety of valuable new equipment in chemistry, physics, and biology laboratories.

### Widening the Frontiers

E. N. C. is not simply an isolated community but is participating in the life of the larger community of which it is a part. In October Eastern Nazarene College presented Burton Holmes, world traveler and widely accepted lecturer, in an illustrated talk on England at the Quincy high school auditorium. In November ten students volunteered to canvass in Quincy for the Community Chest. In November, too, President Williamson became chairman of the city's China Relief Fund.

### "Your Announcer . . ."

"7:30 a.m. WENC, the voice of the campus, brings you morning devotions, conducted by the Evangelistic Association." Or if it was in the evening that you turned your



dial to 640, you heard a campus singer or xylophonist, a local news commentator, or perhaps a message from the Student Council president. Originated in John Young's room in the Mansion, WENC made its debut the night of open house. The studio was later transferred to the third floor of the Canterbury.

### Food for Mind and Body

Two indispensable campus institutions—the Dugout and the Bookstore. Both student-operated, the one provides refreshments and an atmosphere of sociability, while the other furnishes the pencils and books for intellectual brow-knitting. Vesey Stemm and "Dick" Hawk catered to students' palates this year, and "Bill" Restrick held sway at the bookstore.

### Spice of Life

Friday night programs are traditional at E. N. C. They have ranged in variety this year from fine arts recitals to a box party to a psychological clinic. In the fall the Sigma Delta programs began with the Alpha old-fashioned Hallowe'en party in the gym. Gammas followed with a pantomimic representation of life, accompanied by music and

readings. (Gordon Malony, as pictured, represented old age.) Betas changed themselves into the faculty for an evening to give their friendly impression of E. N. C. classes.

### Cupid's Masterpiece

Most colorful social activity of the year was the Valentine's party. "Choose your own, or take a chance"—and some chivalrous gentlemen even offered to escort two young ladies apiece. A melodramatic pantomime, with Mildred Scherneck as silent narrator, a serenading sextet, and the grand march highlighted the program while Cupid threw his darts, literal and psychological.

### Spring Cleaning

When two hundred fifty people appeared one morning on E. N. C.'s campus with rakes, picks, wheel barrows, and old clothes, it was not a return to the farm but merely Campus Day. After thousands of leaves had been raked from garden beds, the tennis courts rolled, and the athletic field whipped into playing order, the campus adopted a swept-and-clean look. Squads of both faculty and students worked in friendly competition until the middle of the afternoon, then relaxed at the season's first game.





### Call to Arms

December 9. E. N. C.'s dining hall at lunch time was unnaturally quiet; only the clicking of spoons disturbed a radio voice, the voice of President Franklin D. Roosevelt. Pearl Harbor had been bombed two days before. Now our country's leader was sending his national message to a democracy at war.

E. N. C. listened tensely. Would not some of our boys be among the fighters? Already an alumnus was in the Pacific. Since that hushed lunch hour several students have left to join the army; others will follow in June. Meanwhile, all of us have begun to realize that we live at war. Test blackouts first practiced here in January may any time become actual aid raids.

### In God We Trust

The rich beauty of the organ and the simple beauty of the decoration of the reconstructed Canterbury intensify symbolically the meaning of the building to E. N. C. This is the center of our worship. Here we sing praises to our God in Sunday and Wednesday evening church services. Here we meet on class days for a spiritual uplift at the chapel period. Here, too, faculty and students gather for Thursday noon prayer meetings. Twice during the year special evangelistic campaigns, conducted by Evangelist Jarrette Aycock and General Superintendent J. B. Chapman, have deepened E. N. C.'s spiritual life.

That spiritual life is not, nevertheless, confined to the chapel; it penetrates the very atmosphere of the campus. Each evening groups meet, usually in the Girls' and Men's parlors, for prayer and testimony. Every Sunday groups go out in Christian work—to preach, to sing, to play. Pictured is one week's personnel of the hospital chorus, which sings each week at the Quincy City Hospital under the auspices of the Evangelistic Association. Because E. N. C. maintains the standards of a Christian college, her religious life is not something apart but is vitally interwoven in all her activities.

In hoc signo, vince.



# S SPORTS



*"Strong the foe to meet;  
walking like a hero  
midst the furnace heat."*



Organized as a means of recognition for outstanding athletes, the "N" Club acts as an athletic council guiding the sporting activities of E. N. C. 1941-42 is a red-letter year. With the framing of a new constitution the society has become co-athletic; that is, girls also may now be elected as members.

To maintain its high standards, the organization has limited itself to eight new members each year. Candidates for election must have been students at Eastern Nazarene College for at least three semesters and during that time must have participated actively in two or more sports. Since good sportsmanship is the aim of the "N" Club, fine character and consistent practice of fair play are included among the membership requirements. An athletic banquet in May, featuring announcement of new members, climaxes E. N. C.'s athletic program.

President Earl Scott, post graduate, heads the 1942 "N" Club.

## "N" Club

*Third Row: Mac Kay, Hanks, L. Shoff, Haynes  
Second Row: Hawk, D. Powell, Anderson, Koffel, Perry  
Front Row: L. Powell, Oldham, Lind, A. M. Shoff, Friend, Pearsall*





Second Row: Fisher, Hawk, Dell, Summerscales, Banham, Richardson  
 Front Row: Crutcher, A. Hedburg, M. Zimmerman, Haynes, Lina

*Alpha*



Second Row: Stocum, L. Powell, Klein  
 Front Row: Pierce, D. Powell, Mac Kay, Mason, I. Jones

*Beta*



Second Row: O. Smith, Brenner, E. Kauffman, Cubie, H. Jones  
 Front Row: Nielson, Stumpf, Hanks, J. Maybury, Calhoun

*Gamma*

# Football

With affected nonchalance the Gamma touch football team took the field for its first game, October 1. They had only two veterans. The other players were inexperienced in real competition. Anything might happen. It was quite possible, even probable, that they would finish in the cellar. A month later they walked off the field just as calmly, just as nonchalantly, but this time with the football trophy safely tucked away—the second Gamma team to win this championship in the last three years.

On the offense, teamwork and short, snappy passes through center proved the major ground-gainers. On the defense, their ability to hold their ground when the opponents were in scoring position, to get off quick kicks that were long, high, and hard to run back, often kept the opposition from scoring.

John Parry, the fighting redhead—runner, passer, kicker extraordinary; Carl Hanks, the "Gallopig Ghost" from Ohio; and Bobby Nielson, the man with the educated toe and flypaper hands, were the Gamma sparkplugs. Brenner, Calhoun, and Maybury completed the team, playing good, dependable ball throughout.

The Betas, suffering from loss of key-men, began to click in the last few games, but it was too late to do anything but edge out the Alphas for second place. MacKay, Mason, and Dale Powell from last year's championship squad were outstanding on the Beta line-up. Use of a tricky play gained considerable yardage for their team, and the games were lost only with close scores.

The Alphas, weakened by ineligibilities and injuries, could not keep up the stiff pace they set themselves in the first two games. In spite of that, Lind, Hedberg, and Haynes refused to give up, and the Alpha team gave a good account of itself to the last game.

Prospects for next season, aside from draft liabilities, are bright for all societies. The Gammas will lose none of their players except C. Weston Jones. The Betas lose no players by graduation, and should be greatly improved by the experience gained this year. The Alphas should be strengthened considerably by new students and experience, and may prove a threat to the other, perhaps more highly favored, teams:

Alpha	6	Gamma	6
Alpha	6	Beta	0
Gamma	6	Beta	0
Alpha	13	Gamma	26
Alpha	7	Beta	7
Gamma	7	Beta	6
Alpha	0	Gamma	26
Alpha	6	Beta	7
Gamma	7	Beta	13

# Basketball

E. N. C.'s 1942 inter-society basketball season offered friendly rivalry and good sport from January to March.

Just to prove that last year's championship was no mistake, Beta boys took the basketball trophy for the second successive year. They bewildered their opponents by accurate passing and uncanny shooting, and observing other teams' weaknesses, capitalized on them.

Dale Powell, high scorer of the year, led the Betas on the offense, while Bill MacKay stood out as a guard. Newcomer Horace Powell teamed with his brother to add spark to the Beta offense. His ability to capture rebounds also played a major role in the Beta success. Karker, Wise, and Eby, playing



*Second Row: Karker, Beck, Eby, Gleason  
Front Row: D. Powell, Mac Kay, H. Powell*

steady, co-operative basketball, rounded out the team.

They were hard pressed, however, by the Gamma society, which threatened the Beta lead from the first. Parry, Hanks, and Calhoun with Bob Nielson and Jack Maybury frequently worked together like clockwork. They proved the Betas were beatable; in fact, they split even with them in their six game series.

The Alphas fielded an inexperienced team which fought desperately but did not

*Second Row: E. Scott, Hedburg, Summerscales, Richardson, Hawk  
Front Row: Young, Haynes, Banham*



*Second Row: Fawcett, Chesbrough, M. Austin, Coach Haynes  
Front Row: L. Brown, Friend, Simonson*





*Corrie, Perry, Brickley, Jenkinson, McEdward, Colcord, Taylor, Coach Mac Kay*

capitalize on all their opportunities. Loss of star Steve Lind practically destroyed their last championship hope. Haynes, Hedberg, Summerscales, and Shields gained much experience—even if it was the hard way—and should form the nucleus of a greatly improved team next year.

	W	L
Betas	9	3
Gammas	8	4
Alphas	1	11

The championship Gamma girls, taking up where they left off last year, sailed smoothly through another successful season. With last year's squad intact, they proved too strong for the other societies and rolled from one victory to another.

The tall forwards, Lois Emery and Louise and Anna Mary Shoff, scored from all angles, working together famously. The guards re-

*Second Row: Mills, Schurman, B. Zimmerman, E. Zimmerman  
Front Row: L. Emery, A. M. Shoff, L. Shoff*



fused to let their opponents shoot more than once and broke up passing attempts time and again. Irma Koffel returned to the line-up in the last games to delight the spectators with her nonchalant passing and shooting.

The Alphas, led by Ruth Friend, forced the Gammas to fight hard in several games, but were not quite able to score a victory.

The Beta girls were scrappy and full of fight in every game. Lack of height handicapped them greatly, however, and despite fine pass work by Perry, McEdward, and Corrie they were unable to break into the win column.

Fine spirit in all the teams made for a successful season. Perhaps next year Professor Shields' law of averages will catch up with the two-year champions.

	W	L
Gammas	6	0
Alphas	3	3
Betas	0	6

*Second Row: Cubie, Amos, J. Maybury, Ronald Sabine  
Front Row: Nielson, Hanks, Calhoun*





E. N. C. does not have inter-collegiate athletics. That is no indication, however, of a lack of sports interest. In touch football and basketball seasons Alphas, Betas, and Gammas are pitted against each other in exciting rivalry. Tennis on the college courts in October is supplanted as December approaches by ice skating and hockey on those same courts, now flooded, or at nearby Sailor's Pond. Ping-pong enthusiasts keep in trim all year around for the spring tournament. While May means baseball to ardent diamond fans, golf takes possession of other E. N. C.







**THE GATEWAY TO OPPORTUNITY**  
**EASTERN NAZARENE COLLEGE**

Winter Session - - September 15 to May 24  
Summer session - - - - June 2 to August 7  
(Full college credit)

Coeducational

Reasonable Expenses

LIBERAL ARTS

Divinity Courses

Vocational Subjects

*for information write to*

**G. B. WILLIAMSON, *President***

WOLLASTON PARK

QUINCY, MASSACHUSETTS

---

---

# NEW ENGLA

## The District Camp Meeting



NORTH READING CAMP TABERNACLE

Beautiful Pine Grove

Spacious—Modern Tabernacle

Young People's Tabernacle

80 Rooms—Cottages

Young People's Housing Units

JUNE 26 - JULY 5

*Workers—Evangelists*

Dr. H. Orton Wiley, Pasadena, Cal.

Rev. Gene Phillips, Ashland, Ky.

*Children's Worker*

Miss Edith Cove

*Song Leader*

Frank Smith, Portland, Maine

*Special Singer and N.Y.P.S. Worker*

Rev. W. W. Tink, Hamilton, Ont.

*Dining Hall*

Mrs. Susan Shepherd

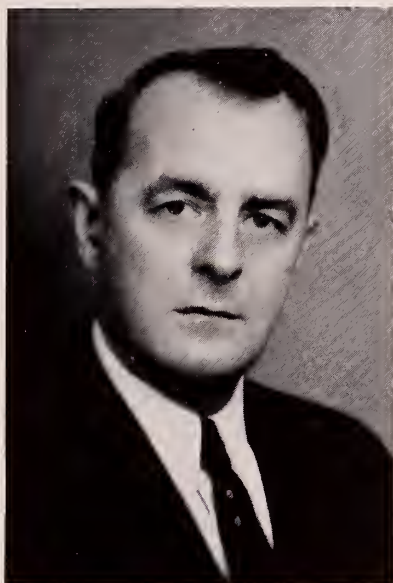
---

---

# ND DISTRICT

## Camp Institute WEEK ENDING LABOR DAY

REV. ROY SMEE, *Superintendent North California District*



J. N. NIELSON, *Dist. Supt.*

N. E. District—80 Churches

Leading Sponsor of Union with Nazarene Church of West.

Three General Superintendents—New Englanders.

Three Wise Men—Riggs, Short, Hilery, New Englanders.

Outstanding in Missionary, Vision and Giving.

---

Nearly \$1,000,000 given for all purposes in Quadrenium

\$40,000 contributed to Education

\$80,000 contributed to Missions

350 New England Young People in E. N. C. (in last quadrenium)

1941-42 { Nine New Church Buildings  
Six New Church Parsonages  
Approximately \$75,000 additional in Property Values

---

# Directory - College

- Adsit, Ruth  
 Alley, Ethelyn  
 Amos, Harvey  
 Anderson, Ruth  
 Andrews, John  
 Andrews, Paul  
 Austin, Marie  
 Babcock, Orma  
 Banham, Edwin  
 Bansomere, Harry  
 Bartlett, Carol  
 Bartlett, William  
 Bartol, Willard  
 Beck, Richard  
 Benson, William  
 Bingler, Ruth  
 Bish, Clarence  
 Blachly, Wesley  
 Boggs, Della  
 Bowen, Hilda  
 Brenner, Robert  
 Brickley, Donald  
 Brickley, Helen  
 Brown, Evelyn  
 Brown, Louise  
 Brown, Margery  
 Bryner, Dorothy  
 Caldwell, Alice  
 Calhoun, Lyl  
 Carter, John  
 Cassidy, Helen  
 Chatfield, Lucile  
 Chatto, Beatrice  
 Chesbrough, Dorothy  
 Church, Clifford  
 Clark, Dorothy  
 Clark, Ruth  
 Clemans, Vaughn  
 Clifford, Robert  
 Cochran, Maude  
 Coffin, Mary  
 Coghill, Robert  
 Colcord, Carolyn  
 Cole, Samuel  
 Cole, William  
 Collins, Norman  
 Cook, Francis  
 Cornell, Charlotte  
 Corrie, Marguerite  
 Crouthamel, Carl  
 Crutcher, Lowell  
 Cubie, Alexander  
 Cushing, Ralph  
 DeCassio, Catherine  
 DeGraff, Myra  
 Dell, Edward  
 Delp, George  
 611 West Ostrander Avenue, Syracuse, N. Y.  
 25 Pitman Avenue, Melrose, Mass.  
 1051 Skinner Avenue, Painesville, Ohio  
 1805 Young Street, Cincinnati, Ohio  
 157 Norfolk Avenue, Egg Harbor, N. J.  
 157 Norfolk Avenue, Egg Harbor, N. J.  
 49 Douglas Street, Portland, Me.  
 Wilmington, N. Y.  
 R. D. No. 2, Wappingers Falls, N. Y.  
 23 East Elm Avenue, Wollaston, Mass.  
 R. R. No. 8, London, Ontario, Canada  
 R. D. No. 8, London, Ontario, Canada  
 148 Elliott Avenue, Wollaston, Mass.  
 R. D. No. 1, Greenville, Pa.  
 11 Landers Road, Wollaston, Mass.  
 117-30 165th Street, Jamaica, N. Y.  
 R. D. No. 2, Mayport, Pa.  
 44 Martin Street, New Haven, Conn.  
 Bel Air, Maryland  
 3rd Avenue, Paden City, West Va.  
 1512 Ferry Street, Easton, Pa.  
 206 Derby Street, Johnstown, Pa.  
 206 Derby Street, Johnstown, Pa.  
 20 Paige Street, Owego, N. Y.  
 Willow Lane, Portsmouth, R. I.  
 429 East 22nd Street, Erie, Pa.  
 R. D. No. 1, Dunn Station, Pa.  
 200 Elm Street, Keene, N. H.  
 East Berlin, Pa.  
 119 East Clay Street, Thomasville, Ga.  
 104 East Edward Street, Union, N. Y.  
 R. F. D. No. 4, Brandon, Vt.  
 R. No. 6, Augusta, Me.  
 135 Blossom Street, Fitchburg, Mass.  
 R. D. No. 1, Mogadore, Ohio  
 R. F. D. No. 1, Livermore Falls, Me.  
 122 North Dawson Street, Urichsville, Ohio  
 Nortonville, N. D.  
 5648 Des Erables Street, Montreal, Canada  
 914 West Third Street, Niles, Ohio  
 3 Rawlings Street, Salem, Mass.  
 423 Main Street, Toronto, Ontario  
 Westboro Road, Upton, Mass.  
 138 Franklin Avenue, Wollaston, Mass.  
 Box 550, Hampton, N. J.  
 R. R. No. 1, Roseland, Ontario, Canada  
 R. D. No. 1, Spring City, Pa.  
 Hopewell, N. J.  
 Robertsdale, Pa.  
 8360 Cadwallader Avenue, Elkins Park, Philadelphia, Pa.  
 Smith Road, Union Hill, N. J.  
 7 Taft Avenue, Haverhill, Mass.  
 93 Franklin Avenue, Wollaston, Mass.  
 187 Hancock Street, Springfield, Mass.  
 3rd Street, West Sayville, N. Y.  
 2391 Southwest 24th Street, Miami, Fla.  
 645 North 16th Street, Allentown, Pa.

---

## Attend Your College Church

23 EAST ELM AVENUE

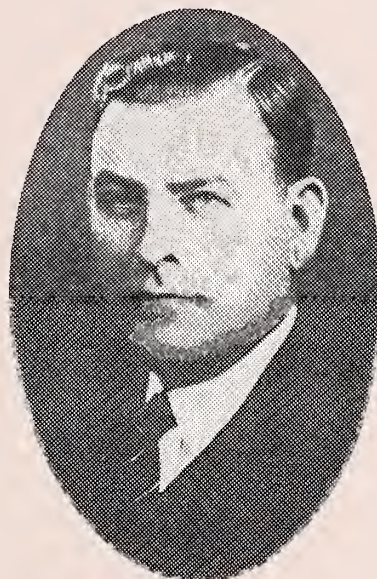
WOLLASTON, MASS.

### Church of the Nazarene

---

#### REGULAR SERVICES

<b>Sunday:</b> Church School . . . . .	9.45 a.m.
Morning Worship . . . . .	11.00 a.m.
N. Y. P. S. . . . .	6.30 p.m.
Evangelistic Service . . . . .	7.30 p.m.
<b>Week Services:</b>	
Prayer and Praise—Wed. . . . .	7.45 p.m.
Prayer and Fasting—Thurs. . . . .	12.00–1.00 p.m.



REV. SAMUEL YOUNG, *Pastor*  
*Parsonage: 29 Dunbarton Rd.*

KENT V. GOODNOW, *Secretary*

MRS. HESTER SHIELDS, *Pres. W. F. M. S.*

E. S. MANN, *Treasurer*

R. S. STANFORD, *Pres. N. Y. P. S.*

PROF. V. GROVES, *Supt. of Church Schools*

---

Congratulations to  
∴ CLASS OF '42 ∴

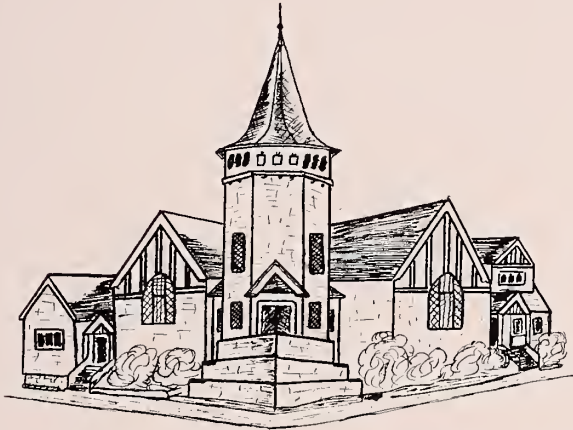
---

Dickson, DeWitt  
 Dixon, George  
 Dixon, J. C.  
 Douglas, George  
 Doverspike, Viola  
 DuVall, Dale  
 Dygoski, Louise  
 Eby, Paul  
 Eckmeyer, William  
 Emery, Lois  
 Emery, Rachel  
 Emmel, Robert  
 Ennis, Elizabeth  
 Fawcett, Maxine  
 Fisk, Douglas  
 Flaugher, Ralph  
 Flowers, Marquis  
 Flowers, Panzie  
 Freese, Donald  
 Friend, Ruth  
 Gardner, Isabelle  
 Gardner, Ruth  
 George, Alice  
 Gould, Winnifred  
 Graffam, Virginia  
 Granger, Beryl  
 Gray, Merle  
 Haines, Gwendola  
 Hammar, Robert  
 Hanks, Carl  
 Harr, Carl  
 Hawk, Richard  
 Haynes, Fred  
 Hedberg, Allen  
 Hedberg, Margaret  
 Heffern, Vernon  
 Heinlein, Evelyn  
 Hetrick, Paul  
 Higgins, Alton  
 Hiller, Madeline  
 Hilliker, Norman  
 Horne, Dorothy  
 Howard, Richard  
 Jenkinson, Florence  
 Jones, Harold  
 Jones, Irving  
 Jones, Vivian Louise  
 Jones, Vivian Naomi  
 Jones, Weston  
 Jordan, Vernon  
 Joudrey, Doris  
 Karker, Gladwyn  
 Kauffman, Abbie-Jean  
 Kauffman, Elizabeth  
 Kauffman, Elmer  
 Keffer, Anna Mae  
 Keffer, Mary Jane  
 Kerling, Vanetta  
 King, James  
 Kirkland, Albert  
 Koffel, Irma  
 66 Grand Avenue, Freeport, N. Y.  
 Box 44, Lisbon Falls, Me.  
 838 State Street, Hammond, Ind.  
 30 Myrtle Avenue, Johnson City, N. Y.  
 Mayport, Pa.  
 R. D. No. 2, Canfield, Ohio  
 1 Vermont Avenue, Bradford, Mass.  
 2028 Northwest 5th Street, Miami, Fla.  
 Vassal Street, Wollaston, Mass.  
 25 Franklin Street, Warren, Pa.  
 25 Franklin Street, Warren, Pa.  
 360 Stoneycreek Road, Johnstown, Pa.  
 224 Railroad Avenue, Delmae, Del.  
 614 West Fair, New Philadelphia, Ohio  
 127 Edgewood Avenue, Edgewood, R. I.  
 1118 North Frederick Street, Arlington, Va.  
 146 Montana Avenue, Chester, West Va.  
 R. D. No. 1, Chester, West Va.  
 303 North Avenue, N. E., New Philadelphia, Ohio  
 Acosta, Pa.  
 96 ½ Oak Street, Binghamton, N. Y.  
 Island Pond, Vt.  
 73 South Broadway, Pennsville, N. J.  
 5538 The Paseo, Kansas City, Mo.  
 11 Midlake Street, Haverhill, Mass.  
 117 Prospect Street, Warren, Pa.  
 Route No. 3, Box 128, Warren, Pa.  
 Hawthorne, Pa.  
 81 Wilda Avenue, Youngstown, Ohio  
 407 Vine Street, East Liverpool, Ohio  
 Alum Bank, Pa.  
 5 Elizabeth Street, Binghamton, N. Y.  
 R. D. No. 2, Mine Hill, N. J.  
 107 Grove Avenue, Patchogue, N. Y.  
 107 Grove Avenue, Patchogue, N. Y.  
 38 Spruce Street, Oil City, Pa.  
 670 Duncan Avenue, Washington, Pa.  
 Sandwich Road, Wareham, Mass.  
 Detroit, Me.  
 231 Glenwood Avenue, Pawtucket, R. I.  
 R. D. No. 1, Blossvale, N. Y.  
 25 Kittredge Road, South Portland, Me.  
 Mentor, Ohio  
 Princeton Street, North Chelmsford, Mass.  
 Cottage Road, Lewiston, Me.  
 Cottage Road, Lewiston, Me.  
 North Hyde Park, Vt.  
 R. F. D. No. 1, Box 320, East Liverpool, Ohio  
 Cottage Road, Lewiston, Me.  
 Livermore Falls, Me.  
 8 Benefit Terrace, Worcester, Mass.  
 Box 122, Houghton, N. Y.  
 272 Fern Street, West Hartford, Conn.  
 272 Fern Street, West Hartford, Conn.  
 272 Fern Street, West Hartford, Conn.  
 R. R. No. 3, New Philadelphia, Ohio  
 R. R. No. 3, New Philadelphia, Ohio  
 Three Springs, Pa.  
 286 West Indiana Avenue, Sebring, Ohio  
 52 Westminster Street, Springfield, Mass.  
 R. D. No. 3, Norristown, Pa.

---

# FIRST CHURCH OF THE NAZARENE

JUDSON SQUARE - MALDEN, MASS.



*"We are Fundamental,  
Evangelistic and  
Friendly too"*



*"A Friendly Church with a Gospel Message"*

## YOU ARE INVITED

### Sunday

10:00 A.M. Bible school for all ages.  
11:00 A.M. Morning Worship.  
Junior Church for children.  
6:00 P.M. Young People's Meetings.  
7:00 P.M. Evangelistic Service.

### Wednesday

7:30 P.M. Prayer, Praise and Bible Study.  
Missionary Societies meet the third Thursday  
of each month.

*Congratulations to the  
Class of '42 and Nautilus Staff*

**Sunday School Superintendent**  
H. H. HARDING

**W. F. M. S. President**  
MRS. ROY STEVENS

**N. Y. P. S. President**  
MISS ALICE SPANGENBERG



REV. ROY F. STEVENS, *Pastor*

---

Ladd, Merrill  
 Lawrence, Robert  
 Leete, Ruth  
 Lind, Stephen  
 Lutton, William  
 Lyle, Anne  
 MacDonald, Ruth  
 MacKay, William  
 Maddox, Carol Mae  
 Maddox, Winifred  
 Mallory, Lenore  
 Malony, Gordon  
 Malony, Margaret  
 Martin, Cedric  
 Mason, Alfred  
 May, Golden  
 Maybury, Jack  
 Maybury, Robert  
 Mills, Goldie  
 Mingledorff, Warren  
 Moore, Ina  
 Mullen, Vernon  
 Mullen, Wilbur  
 McCullough, Jessie  
 McEdward, Norma  
 McKinney, Kathryn  
 McKinney, Laura  
 McQuinney, Charlotte  
 Newbert, Gertrude  
 Nielson, Robert  
 Olcott, Evelyn  
 Oldham, Virginia  
 Park, Astrid  
 Park, Ellen  
 Parker, Maynard  
 Parry, John  
 Parsons, Harold  
 Payne, Dana  
 Payne, Muriel  
 Pearsall, Kenneth  
 Perry, Janice  
 Pfautz, Allan  
 Phillips, Marion  
 Pierce, Kenneth  
 Powell, Dale  
 Powell, Horace  
 Powell, Lee  
 Restrick, William  
 Rice, George  
 Richardson, Allen  
 Robinson, Kenneth  
 Sabine, Ralph  
 Sabine, Ronald  
 Salvia, Rose Marie  
 Savage, Frederick  
 Sawyer, Robert  
 Schlosser, Ruth  
 Schuler, Lucille  
 Schurman, Kathryn  
 Scott, Earl  
 Scott, Wayne  
 R. F. D. No. 1, Swanton, Vt.  
 Wilmington, N. Y.  
 73 Harmon Avenue, Springfield, Mass.  
 Groveville Park, Beacon, N. Y.  
 320 Euclid Street, Corry, Pa.  
 115 Canton Street, Warren, Pa.  
 21 Stanley Street, South Portland, Me.  
 183 Orchard Street, New Bedford, Mass.  
 608 East Second Street, Salem, Ohio  
 608 East Second Street, Salem, Ohio  
 11 Archibald Street, Hamilton, Ontario, Canada  
 R. No. 3, Cumberland, Md.  
 R. No. 3, Cumberland, Md.  
 Harwood Hill, Richford, Vt.  
 45 East Franklin Street, Waynesburg, Pa.  
 Moultonville, N. H.  
 Georgetown, Del.  
 1109 Wyoming Street, Allentown, Pa.  
 Kingsville, Ohio  
 905 Pennsylvania Avenue, Warren, Pa.  
 230 Pennsylvania Avenue, Warren, Ohio  
 Hartland, New Brunswick, Canada  
 Hartland, New Brunswick, Canada  
 158 Allen Lane, S. E., New Philadelphia, Ohio  
 Union, Me.  
 R. F. D. No. 1, West Chazy, N. Y.  
 R. F. D. No. 1, West Chazy, N. Y.  
 R. F. D. No. 1, Leavittsburg, Ohio  
 R. F. D. No. 2, Waldoboro, Me.  
 19 Keniston Road, Melrose, Mass.  
 1 Edythe Street, East Rochester, N. Y.  
 185 Park Avenue, Auburn, Me.  
 Washington Boulevard, North Bellmore, N. Y.  
 Washington Boulevard, North Bellmore, N. Y.  
 Brooktondale, N. Y.  
 932 North New Street, Bethlehem, Pa.  
 67 Sargent Street, Melrose, Mass.  
 57 Courier Boulevard, Kenmore, N. Y.  
 57 Courier Boulevard, Kenmore, N. Y.  
 77 Robertson Road, Lynbrook, N. Y.  
 541 West Glenaven Avenue, Youngstown, Ohio  
 28 Newton Avenue, Wollaston, Mass.  
 122 Greenwood Avenue, East Orange, N. J.  
 R. F. D. No. 1, La Croft, East Liverpool, Ohio  
 R. No. 2, Canfield, Ohio  
 R. No. 2, Canfield, Ohio  
 R. No. 2, Canfield, Ohio  
 404 Cedar Avenue, Collinswood, N. J.  
 R. D. No. 1, Franklin, Pa.  
 12 Finch Avenue, Pawtucket, R. I.  
 512 Superior Street, Grove City, Pa.  
 R. F. D. No. 1, Island Falls, Me.  
 R. F. D. No. 1, Island Falls, Me.  
 951 Ash Street, Johnstown, Pa.  
 29 Martinack Road, Peabody, Mass.  
 306 Dennyson Avenue, Ellet, Ohio  
 R. D. No. 2, Pierpont, Ohio  
 Corydon, Pa.  
 302 Bleecker Avenue, Belleville, Ontario, Canada  
 105 Northeast 95th Street, Miama, Fla.  
 Lisbon, Ohio



---

New England's Largest

# Church Supply House

**The Carroll E. Whittemore Associates, Inc.**

16 ASHBURTON PLACE, BOSTON, MASS.

Telephone: CAPitol 6866

FOR MINISTERS AND THEOLOGICAL STUDENTS

Visit Our 25c Section of Over 2000 Religious Books

On personal books    15 per cent cash, 10 per cent if charged  
Text books            10 per cent cash, 5 per cent if charged

**Send for a complete Church Supply Catalogue**



FIRST CHURCH OF THE

## NAZARENE

HUDSON and PARKCLIFF ST., YOUNGSTOWN, OHIO

SUNDAY SCHOOL SUPT., WILFORD HAMMAR

Sunday School	9:45 a.m.
Morning Service	10:45 a.m.
N. Y. P. S.	6:45 p.m.
Evangelistic Service	7:30 p.m.
Mid-Week Service, Wednesday	7:30 p.m.



When in Our City, Worship With Us

REV. GEO. BRINKMAN, Pastor

---

Shaffer, Robert  
 Schick, Marion  
 Shields, John  
 Shirton, Ruth  
 Shoff, Anna Mary  
 Shoff, Louise  
 Shrader, Jean  
 Sickler, Ruth  
 Simonson, Dorothy  
 Smith, Ernest  
 Smithcors, Miriam  
 Snowden, Charlotte  
 Sparks, David  
 Stanford, Roland  
 Steele, Charlotte  
 Stemm, Donnabelle  
 Stemm, Vesy  
 Stetson, Barbara  
 Stickle, Irma  
 Stockwell, Oscar  
 Storms, Victor  
 Strathern, Leslie  
 Stumpf, Richard  
 Sullivan, Kenneth  
 Summerscales, William  
 Sutherin, Wanda  
 Swinhoe, Cassandra  
 Thomas, Donald  
 Thomas, Edward  
 Timm, Robert  
 Traverse, Phyllis  
 Twining, Margery  
 Wachtel, Alexander  
 Walbroun, Maurine  
 Warmkessel, Loretta  
 Weller, Clifford  
 Weller, Spencer  
 Whispel, Marjorie  
 White, Gene  
 White, Kathyleen  
 Wild, Everett  
 Williamson, Charles  
 Willwerth, Irene  
 Wolf, George  
 Wood, Garnet  
 Woodcook, Arnold  
 Woodcook, Jerry  
 Woods, Alice  
 Wright, Austin  
 Wright, Lois  
 Yerxa, Rachel  
 Young, John  
 Zimmerman, Edith  
 Zimmerman, Elizabeth  
 Zimmerman, Marvin

R. D. No. 2, Pottstown, Pa.  
 Hawthorne, Pa.  
 28 Newton Avenue, Wollaston, Mass.  
 323 Lawrence Street, Lawrence, Mass.  
 Phalanx Station, Ohio  
 Phalanx Station, Ohio  
 90 Winthrop Avenue, Wollaston, Mass.  
 177 Richmond Street, Brooklyn, N. Y.  
 43 Prospect Avenue, Lynbrook, N. Y.  
 R. F. D. No. 2, Waterville, Me.  
 Elmer, N. J.  
 107 Harvard Avenue, West Medford, Mass.  
 338 Bridge Avenue, Windsor, Ontario, Canada  
 Midgell, Prince Edward Island, Canada  
 105 Frey Avenue, Endicott, N. Y.  
 29 Channing Street, Wollaston, Mass.  
 29 Channing Street, Wollaston, Mass.  
 183 Stanford Street, South Portland, Me.  
 Clover Road, Mine Hill, N. J.  
 14 South Lincoln Street, Gardner, Mass.  
 21 West Street, Everett, Mass.  
 49 Boulevard, Bayonne, N. J.  
 183 High Street, Hartford, Conn.  
 Havelock Digby County, Nova Scotia  
 69 Cameron Avenue, Hamilton, Ontario  
 607 North 4th Street, Toronto, Ohio  
 134 River Avenue, Belle Vernon, Pa.  
 3731 Lincoln Avenue, Shadyside, Ohio  
 Houtzdale, Pa.  
 3407 West 46th Street, Cleveland, Ohio  
 6 Dickerman Lane, Braintree, Mass.  
 R. D. No. 2, Union, N. Y.  
 137 Greenkill Avenue, Kingston, N. Y.  
 895 Concrof Avenue, Akron, Ohio  
 1131 South 10th Street, Allentown, Pa.  
 Lowville, N. Y.  
 R. F. D. No. 3, Lowville, N. Y.  
 49 Van Ness Street, Springfield, Mass.  
 422 Federal Street, Niles, Ohio  
 Livermore Falls, Me.  
 28 Almy Street, Saylesville, R. I.  
 3475 Trumbull Street, Bellaire, Ohio  
 318 Sunset Avenue, Ephrata, Pa.  
 477 Newport Avenue, Wollaston, Mass.  
 327 Grant Street, East Liverpool, Ohio  
 R. D. No. 2, Vestal, N. Y.  
 Chamberlain Street, Elmira, N. Y.  
 52 Thornton Street, Wollaston, Mass.  
 13 Kincaid Street, South Portland, Me.  
 179 Broadway, South Portland, Me.  
 1105 Washington Avenue, Portland, Me.  
 Johnson, Vt.  
 Maple Street, Mifflinburg, Pa.  
 Maple Street, Mifflinburg, Pa.  
 48 Cushing Street, Wollaston, Mass.

---

WHEN YOU VISIT WASHINGTON

*Worship at*



Rev. E. E. Grosse  
*Minister*

The First Church of the Nazarene

7th and "A" Streets, N. E.

Holiness Center of the  
Nation's Capitol

---

*Compliments of*

The First Church  
of the Nazarene

Hayden Ave. at Claiborne Road  
EAST CLEVELAND, OHIO

H. B. MACRORY, *Minister*

---

# Directory - Academy

- Ardrey, Alexander  
Ardrey, William  
Austin, Cora  
Booth, Eva  
Brown, David  
Carpenter, Ray  
Coghill, Ida  
Collins, Freida  
Davis, Russel  
Erwin, Elinor  
Etheridge, Pauline  
Fisher, Allan  
French, Mary  
Gleason, Carlton  
Horst, Marjorie  
Kilgour, Mary  
Kinney, Alverda  
Kirby, Dorothy  
Klein, Robert  
Lewis, Richard  
Maddox, Meredith  
Muxworthy, Verna  
Nelson, David  
Parker, Melvin  
Reynolds, Ruth  
Slocum, Harold  
Smith, Mary  
Smith, Otis  
Smith, Ruth  
Taylor, Viola  
Terry, Marie
- 201 Belgravia Avenue, Toronto, Canada  
201 Belgravia Avenue, Toronto, Canada  
49 Douglass Street, Portland, Me.  
R. No. 1, Parkers Landing, Pa.  
42 Jackson Street, Saugus, Mass.  
26 Payson Street, Fitchburg, Mass.  
423 Main Street, Toronto, Ontario  
R. R. No. 1, Roseland, Ontario, Canada  
Capetown, Ontario  
Waterville, Vt.  
57 Orchard Street, Randolph, Mass.  
Gardiner, Me.  
270 McRoberts Avenue, Toronto, Ontario, Canada  
7 Noyes Place, Augusta, Me.  
R. F. D. No. 1, Germantown, N. Y.  
77 Beach Street, Wollaston, Mass.  
227 Overdale Street, Morgantown, W. Va.  
79 Balfour Avenue, Toronto, Canada  
General Delivery, Fort Devens, Mass.  
245 Newbury Avenue, Atlantic, Mass.  
38 Buckingham Road, Wollaston, Mass.  
983 Lincoln Road, Windsor, Ontario  
444 Washington Avenue, Beacon, N. Y.  
R. No. 2, Centerville, Pa.  
431 Hawley Street, Rochester, N. Y.  
115  $\frac{1}{2}$  Sycamore Street, New Bedford, Mass.  
911 Warwick Avenue, Baltimore, Md.  
1118 North Frederick Street, Arlington, Va.  
1070 Ogden Avenue, Flushing, N. Y.  
358 Westmoreland Avenue, Toronto, Ontario  
Terrysville, N. Y.



# Warren, Ohio First Church

Buckeye and Mulberry N.W.

D. D. PALMER, *Pastor*

Morning Worship, Sunday	10:45 A.M.	N. Y. P. S.—Hi N. Y. Juniors,	
Evangelistic Service, Sunday	7:30 P.M.	Sunday	6:30 P.M.
Mid-Week Service, Thursday	7:30 P.M.	Radio Program, Sunday	9:30 P.M.
Church Sunday School	9:30 A.M.		
Mother's Prayer League, Thursday	9:30 A.M.	Men's Prayer Band, Saturday	7:30 P.M.

"A CHURCH WHERE YOU ARE NEVER A STRANGER"

One Block North of Route 82, West Market Street      Buckeye and Mulberry (3/4 mile from Court House)

## VISIT WITH US

### CHURCH OF THE NAZARENE

South 14th St.      Lewisburg, Penna.

WELCOME

REV. S. F. COOK  
*Minister*

### CHURCH OF THE NAZARENE

Ocean Avenue and Garfield Place  
East Rockaway, New York

PAUL S. HILL, *Minister*

Sunday Services:

A.M.	9:30	Class Meeting
	10:30	Preaching
P.M.	2:45	Sunday School
	7:00	N. Y. P. S.
	7:45	Preaching

### Church of the Nazarene

*The Church Where You Are Never a Stranger*

52 Westminster St.      Springfield, Mass.

See our church sign on State St., one mile from the center, Route No. 20. Friends travelling between Boston and New York, visit us.

R. J. Kirkland, *Pastor*

*Compliments of*

### CHURCH OF THE NAZARENE

South Portland, Maine

"A center of evangelism  
in a great centre of defense"

REV. JOHN E. RILEY, *Pastor*

---

PITTSBURG DISTRICT

Church of the Nazarene

REV. O. L. BENEDUM, *District Superintendent*

*Advisory Board*  
CHAS. C. HANKS  
R. F. HEINLEIN  
E. S. CARMAN  
S. S. BENNETT

*District Secretary*  
C. B. WOOD  
  
*District Treasurer*  
CHAS. C. HANKS



"Glory"

---

Bridgeton, N. J.  
**CHURCH OF THE NAZARENE**  
South Avenue  
REV. MILTON H. TAYLOR, Pastor

When coming through Bridgeton  
Stop in and worship with us

RADIO—WSNJ—SUNDAY 9:15 A.M.  
"MOMENTS OF MEDITATION"

---

*When along the Hudson Valley  
Stop at*  
**CHURCH OF THE NAZARENE**  
Newburgh, N. Y.

"A friendly church with an  
aggressive program"

Prospect and First Streets  
EDWIN J. FREEH, Pastor

---

Compliments of  
  
First Church of the Nazarene  
First Street Lowell, Mass.  
E. G. LUSK, Pastor  
  
*Fundamental — Inspirational — Evangelistic*

---

Compliments of  
  
BOLINDALE  
**CHURCH OF THE NAZARENE**  
Ridge Road S.E.  
Warren, Ohio  
  
ERNEST B. MARSH, Minister

---

---

"The Church With the Message for This Hour"  
Spruce and Smith Sts. New Bedford, Mass.



REV. R. E. DOBIE, *Pastor*  
A FRIENDLY ATMOSPHERE — TRY OUR WELCOME

---

**CHURCH OF THE NAZARENE**

Eliot, Maine

REV. R. E. LOCKWOOD  
Pastor

**First Church of the Nazarene**

WINTER ST. HAVERHILL

REV. JAMES M. CUBIE  
Pastor

8 Taft Avenue Phone 6011

---

**Church of the Nazarene**

HUDSON STREET, DOVER, N. J.

9:45 a.m. Sunday Services  
11:00 a.m. Church School  
7:00 a.m. Morning Worship  
7:45 p.m. N. Y. P. S.  
Evangelistic Hour  
Thursday  
7:45 p.m. Mid Week Prayer and Bible Study  
REV. JOHN LUNDEN, *Pastor*  
*Res.*—3 Myrtle Avenue

*Compliments of*

**A FRIEND**

---

---

## Washington and Philadelphia District

Camp at Leslie Md.; Date—August 1-10.  
Workers—Dr. L. Jessop of Chicago, Evangelist; Prof. Baumgardner in charge of singing.  
Services—11 A.M. and 2:30 P.M. and 7:30 P.M. Daily vacation Bible School for children under the supervision of Mrs. B. H. Maybury. Missionary Rally on Friday, 2:30, Mrs. Bessie Berger charge. 100 young people will be entertained free again this year.

PRAY - PLAN - COME



D. E. HIGGS, *Dist. Supt.*

---

### CHURCH OF THE NAZARENE

Derstine & Richardson Aves., Lansing, Pa.

REV. H. E. HECKERT, *Pastor*  
421 Derstine Avenue

#### ORDER OF SERVICES

##### Sunday:

9:30 A.M.—Sunday School  
10:35 A.M.—Morning Worship  
7:00 P.M.—Young People's Meeting  
(A service that is different)  
7:45 P.M.—Great Evangelistic Service

##### Wednesday:

8:00 P.M.—Old-Fashioned Prayer Meeting

You'll not be a stranger here. Everybody welcomed.

---

### CHURCH OF THE NAZARENE

Livermore Falls, Maine

REV. F. W. DOMINA, *Pastor*

*Residence, 27 Searles Street*

Telephone 141

---

FIRST  
CHURCH OF THE NAZARENE  
234 Franklin Street Cambridge, Mass.

*"Holiness Unto the Lord"*

HENRY H. REEVES, *Pastor*

23 William St., Cambridge, Mass.

*Tel. TROWbridge 3874*

---

Church of the Nazarene  
East Liverpool, Ohio

REV. CHARLES C. HANKS, *Pastor*  
407 Vine Street

#### SERVICES

Sunday School	9:30
Morning Worship	11:00
N. Y. P. S.	6:30
Evangelistic Service	7:30
Prayer Service Wednesday	7:30



---

# New York District

REV. J. C. ALBRIGHT, *Superintendent*

108-05-95 Avenue, Richmond Hill, N. Y.

Phone Virginia 7-2553

June 7-17—District Development Tour, Dr. C. W. Jones, Speaker  
July 2-12—Campmeeting, Beacon, N. Y.

*Workers*—Dr. J. B. Chapman, Rev. Raymond Browning,  
and Rev. and Mrs. James Bell

July 15-22—Boys' Camp, Beacon, N. Y. }  
July 22-29—Girls' Camp, Beacon, N. Y. } Rev. Edward E. Young, *Director*

*District slogan—Evangelize or Fossilize*

---

*Compliments of*

REV. EARL LEE

CHURCH OF THE NAZARENE

Flushing, N. Y.

*Compliments of*

REV. DONALD METZ

CHURCH OF THE NAZARENE

Yonkers, N. Y.

---

*Compliments of*

REV. FRANK BRICKLEY

CHURCH OF THE NAZARENE

Barnesville, Ohio

*Compliments of*

REV. GEORGE BRICKLEY

CHURCH OF THE NAZARENE

Niles, Ohio

---

---

# Albany District

One of the smaller Districts with a Great Mission

## THE CHALLENGE:

Over two hundred and seventy-five cities and villages with populations from three quarters of a million to one thousand

---

Church of the Nazarene

West Somerville, Mass.  
Russell and Elm St.

REV. EVERETT PHILLIPS, *Pastor*

---

*Compliments of*

THE QUINCY TRIO

ESTHER, LOIS and JUDITH

---

*"We preach CHRIST, the need of this hour"*

CHURCH OF THE NAZARENE

71 CHAPEL STREET

NORWOOD, MASS.

Rev. R. E. Howard

Rev. D. P. Brickley

*T. M. Anderson*

Evangelist

---



Rev. J. Steward Maddox

Church of the Nazarene

608 E. 2nd, Salem, Ohio

Sunday School	9:45 A.M.
Worship	10:45 A.M.
Y. P. Service	6:30 P.M.
Evangelistic Service	7:30 P.M.
Prayer Meeting, Wed.	7:30 P.M.

---



First Church of the Nazarene

907 Pennsylvania Ave., East  
WARREN, PENNA.

O. C. MINGLEDORF, *Minister*

Class of '29

*On U. S. Route No. 6. If in Warren, Stop and Worship  
with Us.*

CHURCH OF THE NAZARENE

Grove City, Pa.

RUSSELL E. LEWIS, *Pastor*



Sunday School	9:45
Morning Worship	11:00
Young People	6:45
Evening Service	7:30
Prayer Meeting Wednesday	7:30

Remember the Salvation Army  
is always your friend

MAJOR JOHN EDEEN  
Quincy, Mass.

*Presented by the*

FIRST  
CHURCH OF THE NAZARENE

Lehighton, Penna.

One of the First Churches in the  
Washington-Philadelphia District

Our Beloved Missionary

REV. J. F. PENN

was called by God to Foreign  
Fields from this church which  
stands wholly for the Doctrine of  
our Manual

REV. R. O. PARRY, *Pastor*

*Compliments of*

JOHN PARRY

Class of '43

Gamma Coach

# A MAN IS KNOWN . . .

by the company he keeps.

In so far as the printing of college annuals is concerned, this bit of wisdom might be re-worded "A Company Is Known by the Clients It Keeps."

We are proud of the Annuals we continue to publish year after year. This patronage, we believe, reflects our ability to produce fine letter press printing, otherwise we would not be entrusted with such responsibility.

**WARREN PRESS**

160 WARREN STREET  
PRINTERS SINCE EIGHTEEN-SIXTY  
BOSTON, MASSACHUSETTS

WINN STUDIO

132 Boylston St., Boston

## *Another Successful Yearbook . . .*

. . . As a credit to all concerned, we sincerely congratulate the editorial and business staff for their fine co-operation—also to the printer and engraver for greatly assisting us to publish a book that is far superior in portrait quality than any ever before published.

The quality of work and the Service rendered is the type of work produced by **Richard G. Mahoney** after 22 years of co-operation with editors of the finer annuals.

RICHARD G. MAHONEY  
**Mgr. School & College Dept.**

PREsident 6605

*Compliments of*  
**A. H. ALTER, D.M.D.**  
522 Hancock Street  
Wollaston, Mass.

*Compliments of*  
**ANDROSCOGGIN  
NURSING HOME**

LEWISTON

MAINE

**W. S. ALTMAN, M.D.**  
32 Spear Street  
Quincy, Mass.

**CHARLES G. DJERF, M.D.**  
1159 Hancock Street  
Quincy, Mass.

**W. H. BEARD, D.M.D.**  
1011 Beacon Street  
Boston, Mass.

**GEO. L. MacKINNON, M.D.**  
7 West Elm Avenue  
Wollaston, Mass.

Tel. BEAcon 1563

**DR. LAWRENCE T. BUTLER**  
Optometrist  
692 Hancock Street  
Wollaston, Mass.

**WM. E. MULLIN, D.M.D.**  
311 Newport Avenue  
Wollaston, Mass.

**EARL STONE, D.M.D.**  
7 Elm Avenue  
Wollaston, Mass.

*Compliments of*  
**WM. D. MICHAEL, M.D.**  
Optometrist  
1581 Hancock Street

QUINCY

MASSACHUSETTS

---

# HOWARD JOHNSON'S

## Famous Ice Cream in 28 Flavors

---

O'CONNELL and CASTA  
PRODUCE CO.

*Imported and Domestic*  
Fruits and Vegetables  
for

HOTELS - CLUBS - INSTITUTIONS  
RESTAURANTS

41 N. Market St. Boston, Mass.  
LAFayette 1225-1226

---

*Compliments of*

J. W. & HI-HO

Bolton-Smart  
Company

*Wholesale Purveyors of Choice*

BEEF - PORK - LAMB - VEAL  
POULTRY - FISH - BUTTER  
CHEESE - EGGS - RELISHES

BOSTON  
17-25 South Market St.  
Telephone LAFayette 1900

---

# ***AUTOGRAPHS***









